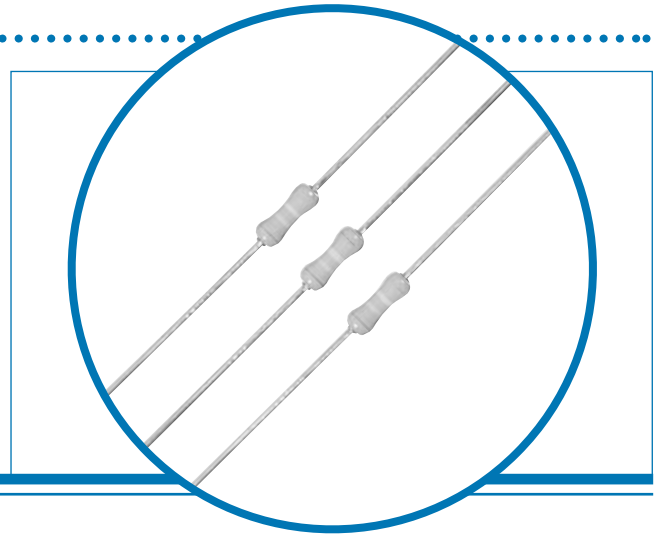


WL4

- **Insulated body allows WL4 to be passed over tracks without short circuiting**
- **Can be tape mounted for auto-insertion machines**
- **Removes the need for double sided PC boards in some cases**

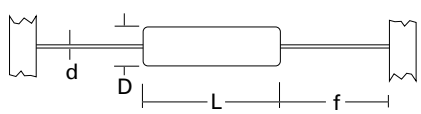


Electrical Data

| | | WL4 | Notes |
|---------------------------|-------|------------|---|
| Resistance A | ohms | 0.007 max. | Measured @ 6mm from body |
| Resistance B | ohms | 0.012 max. | Measured across full length of body termination wires |
| Current carrying capacity | amps | 5 max. | |
| Isolation voltage | volts | 500 | dc or ac peak |
| Insulation resistance | ohms | > 1G | |

Physical Data

| Dimensions (mm) | | | | | | |
|-----------------|-------|-------|-------|-------|----------------------|------------------|
| Type | L Max | D Max | f min | d nom | PCB mounting centres | Min. bend radius |
| WL4 | 6.2 | 2.3 | 21.0 | 0.6 | 10.2 | 0.6 |



Construction

Termination wires are welded to a very low resistance body. The body is then protected by a moisture resistance high dielectric strength coating applied so that the terminations remain completely clear. This permits a well defined body length (clean lead to clean lead dimension L).

Materials

Material Solder-coated copper wire.

Strength The materials meet the requirements of IEC 68.2.21

Solderability The terminations meet the requirements of IEC 115-1, Clause 4.17.3.2

Marking

Resistors are marked with two yellow bands placed centrally on the body.

Solvent Resistance

The body protection and marking are resistant to all normal industrial cleaning solvents suitable for printed circuits.

General Note

Welwyn Components reserves the right to make changes in product specification without notice or liability. All information is subject to Welwyn's own data and is considered accurate at time of going to print.

© Welwyn Components Limited · Bedlington, Northumberland NE22 7AA, UK
Telephone: +44 (0) 1670 822181 · Facsimile: +44 (0) 1670 829465 · Email: info@welwyn-tt.com · Website: www.welwyn-tt.com



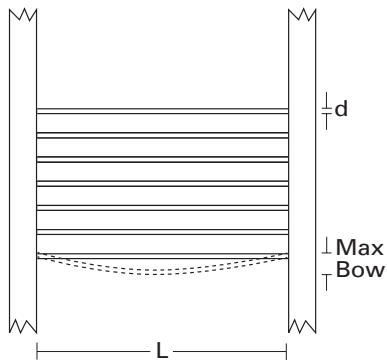
A subsidiary of
TT electronics plc

Issue C · 01.07

WL4

Jumper Resistors

| Dimensions (mm) | | | |
|-----------------|-------|-------|----------|
| Type | L max | d nom | Max. bow |
| WLT0652 | 52 | 0.6 | 1.0 |
| WLT0752 | 52 | 0.7 | 1.0 |
| WLT0852 | 52 | 0.8 | 1.0 |

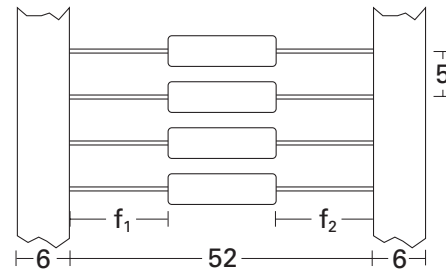


Marking

All wire links are supplied tape packed ready for loading onto automatic sequencing and insertion machines.

The standard taping method and critical dimensions are shown below. Component wires will not protrude beyond the outside edge of the tapes.

Alternative packaging available by request.



Body location $f_1 - f_2 \leq 1.4$ mm

Standard Quantities Per Package

| Type | WL4 | WLT0652 | WLT0752 | WLT0852 |
|-----------|------|---------|---------|---------|
| Ammo pack | 5000 | 7500 | 5000 | 5000 |