

- 
- Technical drawing of a pin contact assembly, showing a cross-section of a cable with dimensions and callouts.
- Dimensions and Callouts:
- Overall length:  $\frac{51}{64}$
  - Callout 1: Points to the outer jacket.
  - Callout 2: Points to the inner insulation.
  - Callout 3: Points to the braided shield.
  - Callout 4: Points to the central conductor.
  - Callout 5: Points to the contact pin.
  - Inner insulation dimensions:  $\frac{.078}{.030}$
  - Contact pin dimensions:  $\frac{.020 \text{ DIA.}}{\text{HOLE } \times \frac{5}{32} \text{ DEEP}}$
  - Central conductor dimensions:  $\frac{.057 \text{ DIA.}}{\text{MAX. OVER BRAID}}$
  - Outer jacket dimensions:  $\frac{.082 \text{ DIA.}}$
  - Central conductor diameter:  $\frac{.120 \text{ DIA.}}$
  - Reference dimension:  $\frac{5}{32} \text{ REF.}$
- COAXIAL CABLE TO BE USED HERE AS SHOWN IN PIN CONTACT ASSEMBLY

SOCKET CONTACT ASSEMBLY  
CAT. NO. 100-8000 S

- |               |   |
|---------------|---|
| 100-80        | E |
| SHEET #1 OF 7 |   |

GENERAL NOTES UNLESS OTHERWISE SPECIFIED

1. ALL DIMENSIONS ARE IN INCHES.
2. ALL DIMENSIONS ARE
3. REMOVE ALL BURRS TO \_\_\_\_\_ MAX.
4. BREAK ALL SHARP EDGES EQ. TO \_\_\_\_\_ R. MAX.
5. \_\_\_\_\_ R. MAX. ON INSIDE CORNERS.
6. ALL DIAMETERS CONCENTRIC \_\_\_\_\_ T.I.R. MAX.
7. ALL SURFACES TO BE SQUARE AND/OR PARALLEL WITHIN \_\_\_\_\_ IN./IN.
8. GENERAL SURFACE FINISH TO BE \_\_\_\_\_ B+1  
MICROINCHES RMS. MAX.

9. TOLERANCES	FRACTIONS
.XX ±.010	±1/4
.XXX ±.003	ANGLES ±1/2

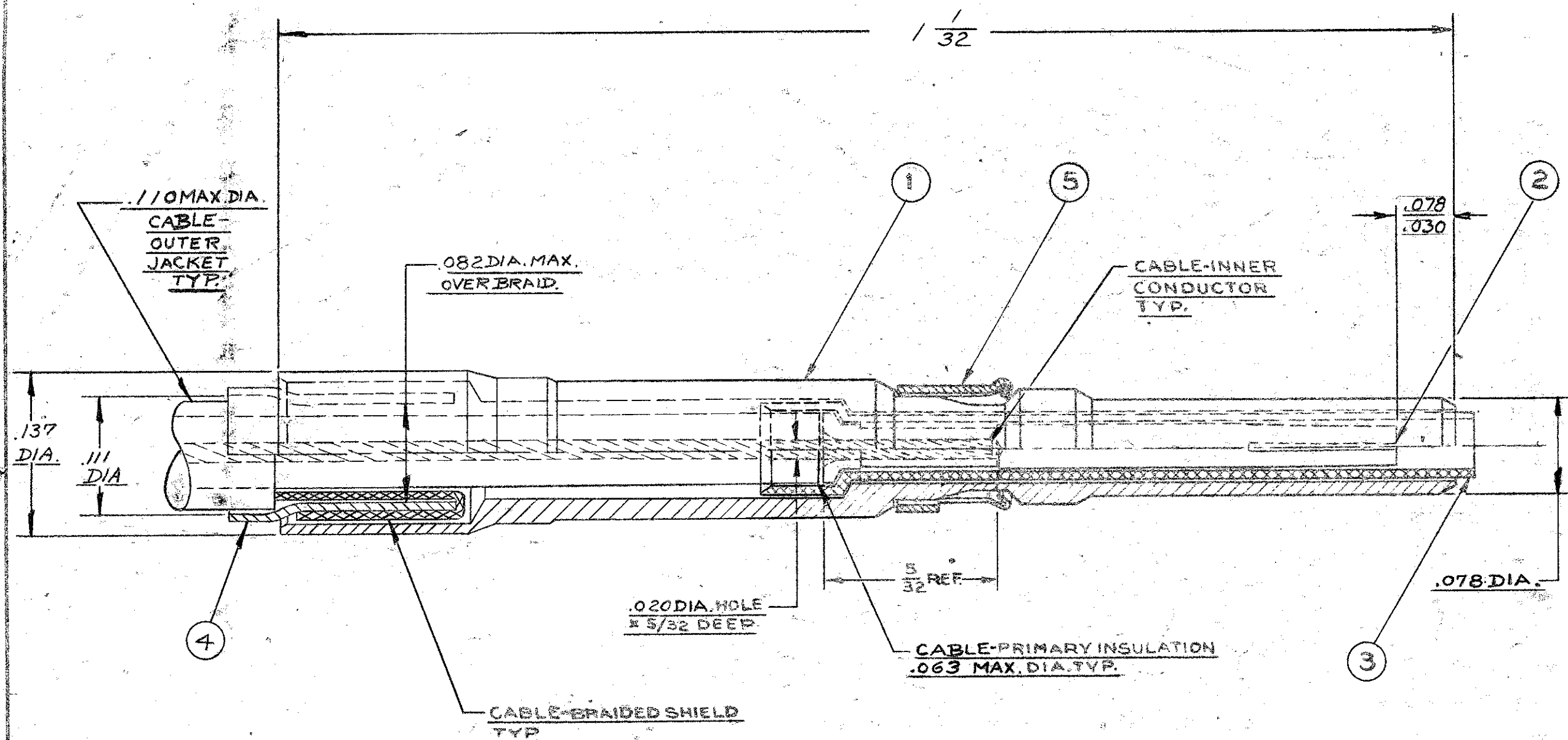
10. WEIGHT \_\_\_\_\_ ±1/2

TITLE <b>OUTLINE ASSEMBLY- MRAC</b>			
<b>SHIELDED PIN &amp; SOCKET CONTACT</b>			
MATERIAL			
<b>SEE ABOVE</b>			
FINISH			
<b>SEE ABOVE</b>			
SCALE	DR. <b>L. SALKA</b>	CK'D.	AP'D. <i>ELC</i>
<b>10:1</b>	DATE <b>7-9-65</b>	DATE	DATE <i>7/28/65</i>
<b>WINCHESTER ELECTRONICS</b>			
DIVISION OF LITTON PRECISION PRODUCTS INC.			
OAKVILLE, CONN.			
DWG. SIZE	<b>C</b>		<b>100-80 SHEET #1 OF 7</b>
REV.			<b>REV. 1</b>



# PIN CONTACT ASSEMBLY CAT. NO. 100-8001 P

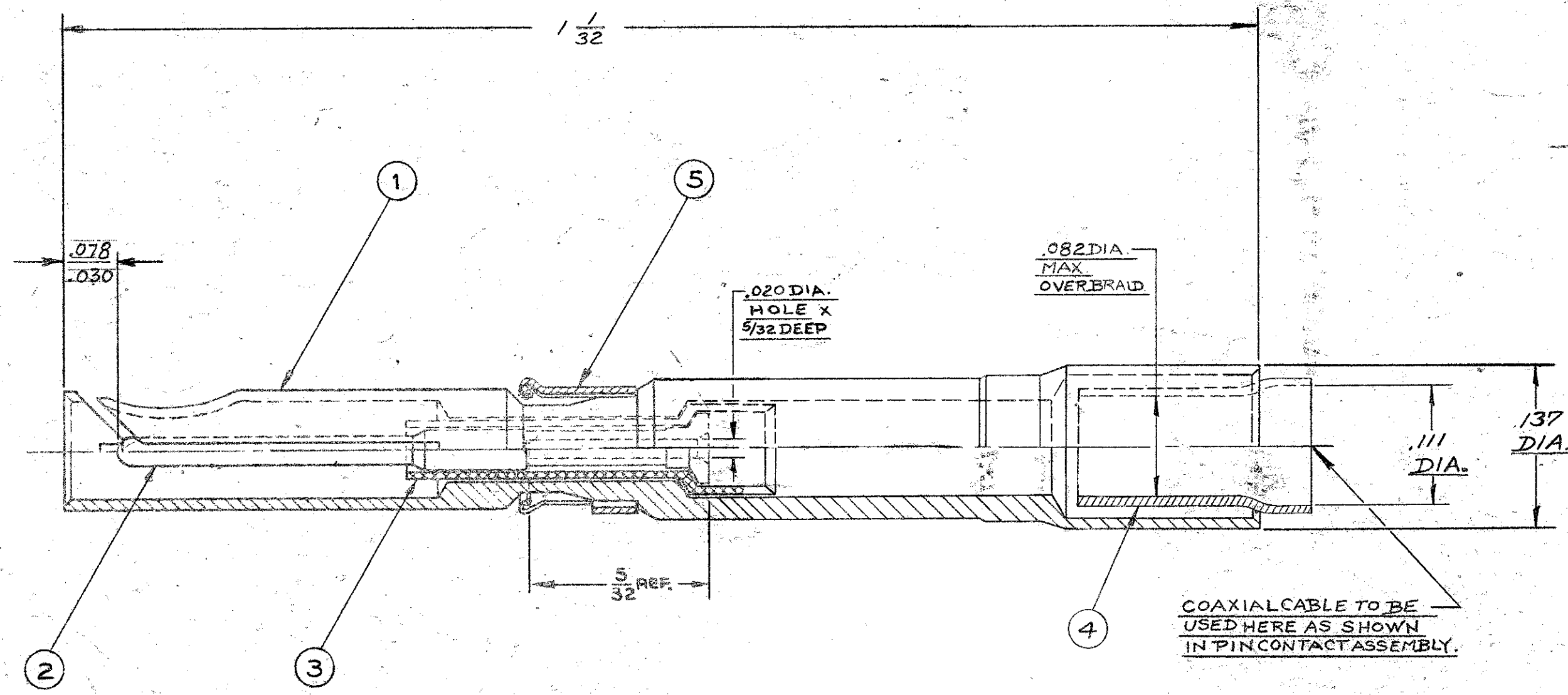
- PIN CONTACT (OUTER)  
PHOSPHOR BRONZE, QQ-B-750, GOLD OVER COPPER FLASH
- SOCKET CONTACT (INNER)  
BERYLLIUM COPPER, QQ-C-530, GOLD OVER COPPER FLASH
- INSULATING SLEEVE (LONG)  
POLYPROPYLENE
- CRIMP FERRULE  
BERYLLIUM COPPER, QQ-C-530, GOLD OVER COPPER FLASH
- RETAINING CLIP  
BERYLLIUM COPPER, QQ-C-533, GOLD OVER COPPER FLASH



100-80  
SHEET #2 OF 7 E

# SOCKET CONTACT ASSEMBLY CAT. NO. 100-8001 S

- SOCKET CONTACT (OUTER)  
BERYLLIUM COPPER, QQ-C-530, GOLD OVER COPPER FLASH
- PIN CONTACT (INNER)  
PHOSPHOR BRONZE, QQ-B-750, GOLD OVER COPPER FLASH
- INSULATING SLEEVE (SHORT)  
POLYPROPYLENE
- CRIMP FERRULE  
BERYLLIUM COPPER, QQ-C-530, GOLD OVER COPPER FLASH
- RETAINING CLIP  
BERYLLIUM COPPER, QQ-C-533, GOLD OVER COPPER FLASH



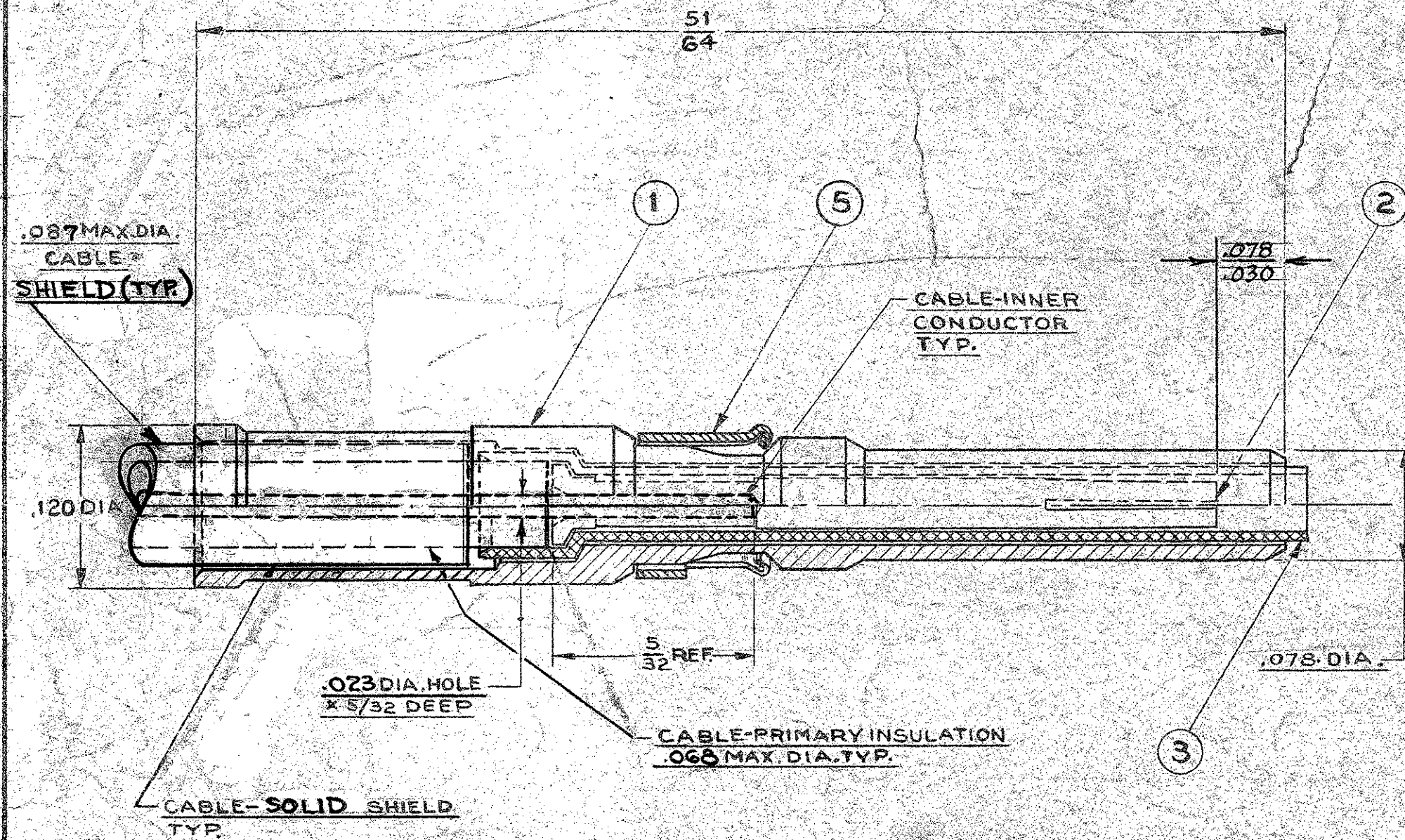
GENERAL NOTES UNLESS OTHERWISE SPECIFIED  
1. ALL DIMENSIONS ARE IN INCHES.  
2. ALL DIMENSIONS ARE  
3. REMOVE ALL BURRS TO MAX.  
4. BREAK ALL SHARP EDGES EQ. TO R. MAX.  
5. R. MAX. ON INSIDE CORNERS.  
6. ALL DIAMETERS CONCENTRIC T.I.R. MAX.  
7. ALL SURFACES TO BE SQUARE AND/OR PARALLEL WITHIN .001 IN./IN.  
8. GENERAL SURFACE FINISH TO BE MICROINCHES RMS. MAX.  
9. TOLERANCES  
XXX ±.010  
XXX ±.003  
10. WEIGHT

TITLE OUTLINE ASSEMBLY - MRAC			
SHIELDED PIN & SOCKET CONTACT			
SCALE 10 X 1	DR. DALEY	CHK. E. ERICSSON	DATE 7-5-66
WINCHESTER ELECTRONICS DIVISION OF LITTON PRECISION PRODUCTS INC. DANVILLE, CONN.			
DWG. C	100-80 SHEET #2 OF 7		DATE 7/6/66

REV	CHANGE	DATE	BY	APP
A	PRELIMINARY REMOVED	6-2-71	SK	
B	ADDED .078/.030 DIM. & PLACES PER ECR # 3443	5-28-86	DOONNA	
C	ED 12874 EDC	2-28-96	K.D.B.	
D	REMOVED NOTE FOR PRODUCTION OR SALES AS OF 4/23/71 EN12931" SEE SHEET 4 EWR 220-86 EN 16847 JLL			
E	REMOVED INACTIVE NOTE FROM CAT. NO. 100-8001 ECR # 4129 JLL			

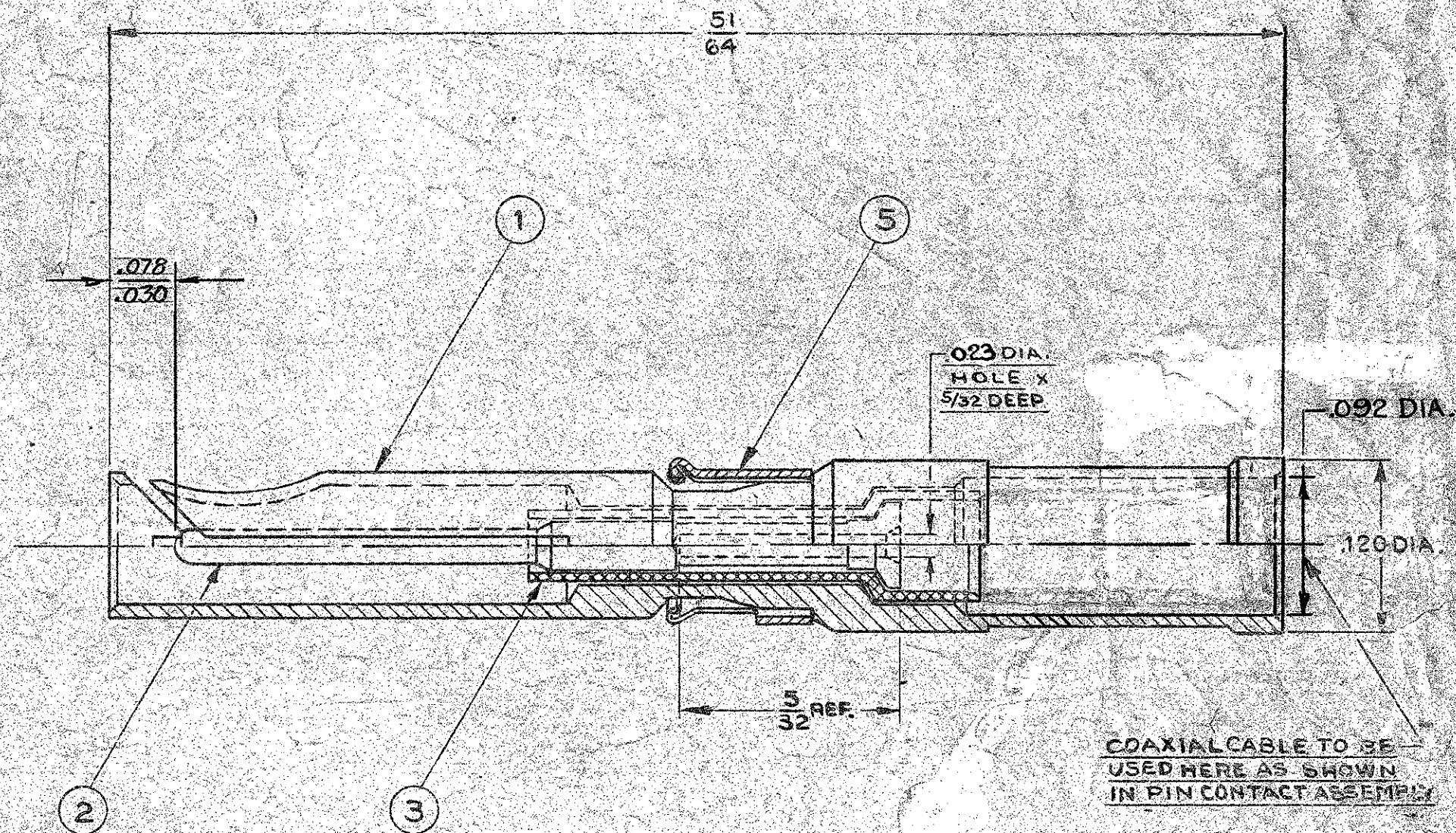
This drawing, the design and ideas embodied in the device to which it relates, are the property of Winchester Electronics, Inc. and shall not be employed, copied, or distributed without the consent of Winchester Electronics, Inc.





**PIN CONTACT ASSEMBLY**  
**CAT. NO. 100-8002 P**  
**FOR USE WITH MICROCOAX UT85**

- ① PIN CONTACT (OUTER)  
PHOSPHOR BRONZE, QQ-B-750, GOLD OVER COPPER FLASH
- ② SOCKET CONTACT (INNER)  
BERYLLIUM COPPER, QQ-C-530, GOLD OVER COPPER FLASH
- ③ INSULATING SLEEVE (LONG)  
POLYPROPYLENE
- ⑤ RETAINING CLIP  
BERYLLIUM COPPER, QQ-C-533, GOLD OVER COPPER FLASH



**SOCKET CONTACT ASSEMBLY**  
**CAT. NO. 100-8002 S**  
**FOR USE WITH MICROCOAX UT85**

- ① SOCKET CONTACT (OUTER)  
BERYLLIUM COPPER, QQ-C-530, GOLD OVER COPPER FLASH
- ② PIN CONTACT (INNER)  
PHOSPHOR BRONZE, QQ-B-750, GOLD OVER COPPER FLASH
- ③ INSULATING SLEEVE (SHORT)  
POLYPROPYLENE
- ⑤ RETAINING CLIP  
BERYLLIUM COPPER, QQ-C-533, GOLD OVER COPPER FLASH

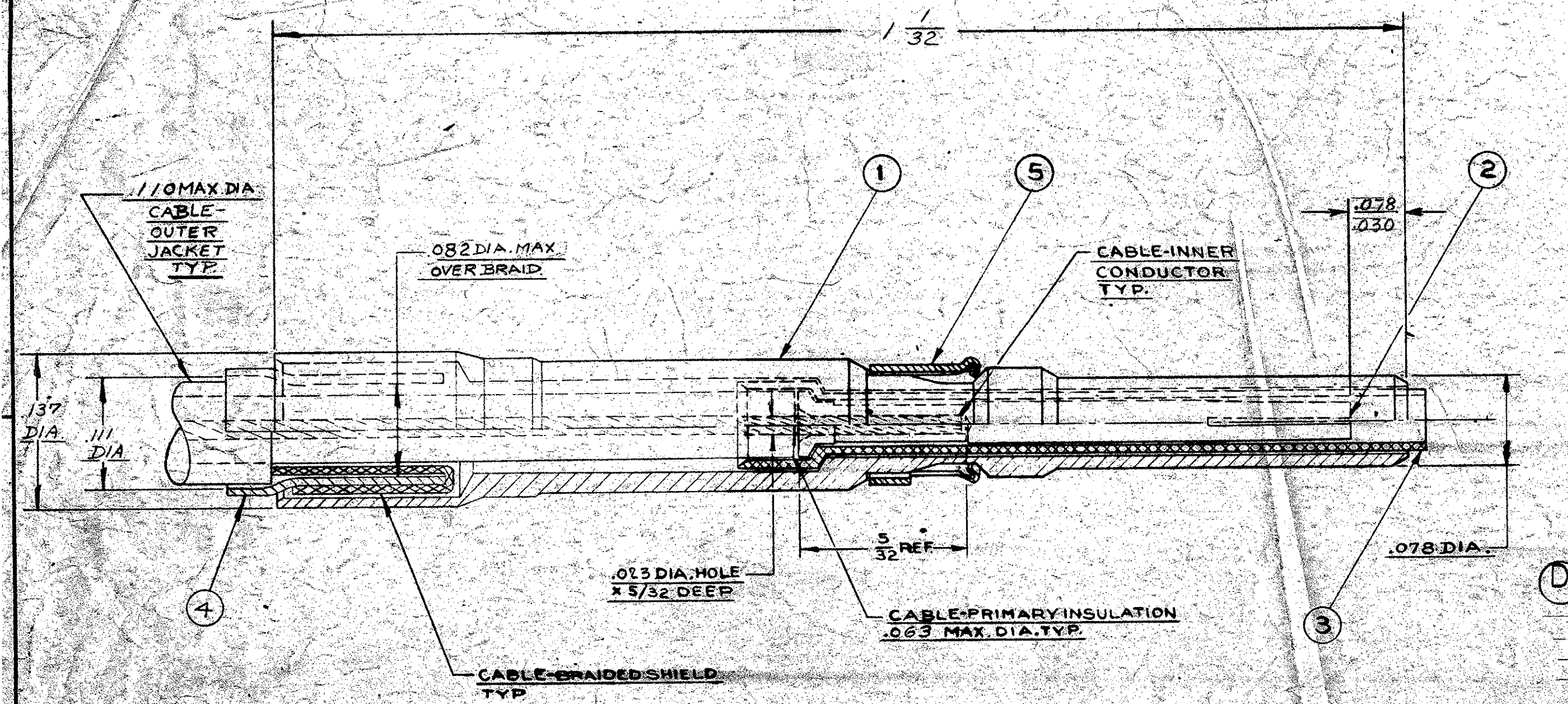
P100-80 3/4" 5/8" 1/4" 1/8" 1/16" 1/32" 1/64" 1/128" 1/256" 1/512" 1/1024" 1/2048" 1/4096" 1/8192" 1/16384" 1/32768" 1/65536" 1/131072" 1/262144" 1/524288" 1/1048576" 1/2097152" 1/4194304" 1/8388608" 1/16777216" 1/33554432" 1/67108864" 1/134217728" 1/268435456" 1/536870912" 1/1073741824" 1/2147483648" 1/4294967296" 1/8589934592" 1/17179869184" 1/34359738368" 1/68719476736" 1/137438953472" 1/274877906944" 1/549755813888" 1/1099511627776" 1/2199023255552" 1/4398046511104" 1/8796093022208" 1/17592186044416" 1/35184372088832" 1/70368744177664" 1/140737488355328" 1/281474976710656" 1/562949953421312" 1/1125899906842624" 1/2251799813685248" 1/4503599627370496" 1/9007199254740992" 1/18014398509481984" 1/36028797018963968" 1/72057594037927936" 1/144115188075855872" 1/288230376151711744" 1/576460752303423488" 1/1152921504606846976" 1/2305843009213693952" 1/4611686018427387904" 1/9223372036854775808" 1/18446744073709551616" 1/36893488147419103232" 1/73786976294838206464" 1/147573952589676412928" 1/295147905179352825856" 1/590295810358705651712" 1/1180591620717411303424" 1/2361183241434822606848" 1/4722366482869645213696" 1/9444732965739290427392" 1/18889465931478580854784" 1/37778931862957161709568" 1/75557863725914323419136" 1/151115727451828646838272" 1/302231454903657293676544" 1/604462909807314587353088" 1/1208925819614629174706176" 1/2417851639229258349412352" 1/4835703278458516698824704" 1/9671406556917033397649408" 1/19342813113834066795298816" 1/38685626227668133590597632" 1/77371252455336267181195264" 1/154742504910672534362390528" 1/309485009821345068724781056" 1/618970019642690137449562112" 1/1237940039285380274899124224" 1/2475880078570760549798248448" 1/4951760157141521099596496896" 1/9903520314283042199192993792" 1/19807040628566084398385987584" 1/39614081257132168796771975168" 1/79228162514264337593543950336" 1/158456325028528675187087900672" 1/316912650057057350374175801344" 1/633825300114114700748351602688" 1/1267650600228229401496703205376" 1/2535301200456458802993406410752" 1/5070602400912917605986812821504" 1/10141204801825835211973625643008" 1/20282409603651670423947251286016" 1/40564819207303340847894502572032" 1/81129638414606681695789005144064" 1/162259276829213363391578010288128" 1/324518553658426726783156020576256" 1/649037107316853453566312041152512" 1/1298074214633706907132624082305024" 1/2596148429267413814265248164610048" 1/5192296858534827628530496329220096" 1/10384593717069655257060992658440192" 1/20769187434139310514121985316880384" 1/41538374868278621028243970633760768" 1/83076749736557242056487941267521536" 1/166153499473114484112975882535043072" 1/332306998946228968225951765070086144" 1/664613997892457936451903530140172288" 1/1329227995784915872903807060280344576" 1/2658455991569831745807614120560689152" 1/5316911983139663491615228241121378304" 1/10633823966279326983230456482242756608" 1/21267647932558653966460912964485513216" 1/42535295865117307932921825928971026432" 1/85070591730234615865843651857942052864" 1/170141183460469231731687303715884105728" 1/340282366920938463463374607431768211456" 1/680564733841876926926749214863536422912" 1/1361129467683753853853498429727072845824" 1/2722258935367507707706996859454145691648" 1/5444517870735015415413993718908291383296" 1/10889035741470030830827987437816582766592" 1/21778071482940061661655974875633165533184" 1/43556142965880123323311949751266331066368" 1/87112285931760246646623899502532662132736" 1/17422457186352049329324779900506524426552" 1/34844914372704098658649559801013048853104" 1/69689828745408197317299119602026097706208" 1/139379657490816394634598239204052195412416" 1/278759314981632789269196478408104390824832" 1/557518629963265578538392956816208781649664" 1/1115037259926531157076785913632417363299328" 1/2230074519853062314153571827264834726598656" 1/4460149039706124628307143654529669453197312" 1/8920298079412249256614287309059338906394624" 1/17840596158824498513228574618118677812789248" 1/35681192317648997026457149236237355625578496" 1/71362384635297994052914298472474711251156992" 1/142724769270595988105828596944949422502313984" 1/285449538541191976211657193889898845004627968" 1/570899077082383952423314387779797690009255936" 1/1141798154164767904846628775559595380018511872" 1/2283596308329535809693257551119190760037023744" 1/4567192616659071619386515102238381520074047488" 1/9134385233318143238773030204476763040148094976" 1/18268770466636286477546060408953526080296199936" 1/36537540933272572955092120817907052160592399872" 1/73075081866545145910184241635814104321184799744" 1/146150163733090291820368483271628208642369599488" 1/292300327466180583640736966543256417284739198976" 1/584600654932361167281473933086512834569478397952" 1/1169201309864722334562947866173025669138956795904" 1/2338402619729444669125895732346051338277913591808" 1/4676805239458889338251791464692102676555827183616" 1/9353610478917778676503582929384205353111654367232" 1/18707220957835557353007165858768410706223308734464" 1/37414441915671114706014331717536821412446617468928" 1/74828883831342229412028663435073642824893234937856" 1/149657767662684458824057326870147285649786469875712" 1/299315535325368917648114653740294571299572939751424" 1/598631070650737835296229307480589142599145879502848" 1/1197262141301475670592458614961178285198291759005696" 1/2394524282602951341184917229922356570396583518011392" 1/4789048565205902682369834459844713140793167036022784" 1/9578097130411805364739668919689426281586334072045568" 1/19156194260823610729479337839378852563172668144111136" 1/38312388521647221458958675678757705126345336288222272" 1/76624777043294442917917351357515410252690672576444544" 1/153249554086588885835834702715030820505381345152889" 1/306499108173177771671669405430061641010762690305778" 1/612998216346355543343338810860123282021525380611556" 1/1225996432692711086686677621720246564043050761223112" 1/2451992865385422173373355243440493128086101522446224" 1/4903985730770844346746710486880986256172203044892448" 1/9807971461541688693493420973761972512344406089784896" 1/19615942923083377386986841947523945024688812195569792" 1/39231885846166754773973683895047890049377624391139584" 1/78463771692333509547947367790095780098755248782279168" 1/156927543384667019095894735580191560197510497564558336" 1/313855086769334038191789471160383120395020995129116672" 1/627710173538668076383578942320766240790041990258233344" 1/1255420347077336152767157884641532481580083980516466688" 1/2510840694154672305534315769283064963160167961032933376" 1/5021681388309344611068631538566129926320335922065866752" 1/10043362776618689222137263077132259532640671844131733504" 1/20086725553237378444274526154264519065281343688263467008" 1/40173451106474756888549052308529038130562687376526934016" 1/80346902212949513777098104617058076261125374753053868032" 1/160693804425899027554196209234116152522250749506107736064" 1/321387608851798055108392418468232305044501499012215472128" 1/642775217703596110216784836936464610089002998024430944256" 1/1285550435407192220433569673872929220178005996048861888512" 1/2571100870814384440867139347745858440356011992097723776024" 1/5142201741628768881734278695491716880712023984195447552048" 1/10284403483257537763468557390983433761424047968390895104096" 1/20568806966515075526937114781966867522848095936781790208192" 1/41137613933030151053874229563933735045696191873563580416384" 1/82275227866060302107748459127867470091392383747127160832768" 1/164550455732120604215496918255734940182784767494254321665536" 1/329100911464241208430993836511469880365569534988508643331072" 1/658201822928482416861987673022939760731139069977017286662144" 1/1316403645856964833723975346045879521462278139954034573324288" 1/2632807291713929667447950692091759042924556279908069146648576" 1/5265614583427859334895901384183518085849112559816138293297152" 1/10531229166855718669791802768367036171698225119632276586594304" 1/21062458333711437339583605536734072343396450239264553173188608" 1/42124916667422874679167211073468144686792900478529106346377216" 1/84249833334845749358334422146936289373585800957058212692754432" 1/168499666689691498716668844293872578747171601914116425385508864" 1/336999333379382997433337688587745157494343203828232850771017728" 1/673998666758765994866675377175490314988686407656465701542035456" 1/1347997333517531989733350754350980629977372815312931403084070912" 1/2695994667035063979466701508701961259954745630625862806168141824" 1/5391989334070127958933403017403922519909491261251725612336283648" 1/1078397866814025591786680603480784503981892252250345122467256736" 1/2156795733628051183573361206961569007963784504500690247344513472" 1/4313591467256102367146722413923138015927569009001380494689026944" 1/8627182934512204734293444827846276031855138018002760989378053888" 1/17254365869024409468586889655692552063710276036005521978756107776" 1/34508731738048818937173779311385104127420552072011043957512215552" 1/69017463476097637874347558622770208254841104144022087915024431104" 1/138034926952195275748695117245540416509682208288044175830048862208" 1/276069853904390551497390234491080833019364416576088351660097724416" 1/552139707808781102994780468982161666038728833152176703320195448832" 1/1104279415617562205989560937964323332077457666304353406640390897664" 1/2208558831235124411979121875928646664154915332608706813280781795328" 1/4417117662470248823958243751857293328309830665217413626561563590656" 1/8834235324940497647916487503714586656619661330434827253123127181312" 1/17668470649880995295832975007429173313239322660869654506246253762624" 1/35336941299761990591665950014858346626478645321739309012492507525248" 1/70673882599523981183331900029716693252957290643478618024985015050496" 1/141347765199047962366663800059433386505914581286957236049970030100992" 1/282695530398095924733327600118866773011829162573914472099940060201984" 1/565391060796191849466655200237733546023658325147828944199880120403968" 1/1130782121592383698933310400475467092047316650295657888399760240807936" 1/2261564243184767397866620800950934184094633300591315776799520481615872" 1/4523128486369534795733241601901868368189266601182631553599040963231744" 1/9046256972739069591466483203803736736378533202365263107198081926463488" 1/18092513945478139182932966407607473472757066404730526214396163852926976" 1/36185027890956278365865932815214946945514132809461052428792327705853952" 1/72370055781912556731731865630429893891028265618922104857584655411707904" 1/144740111563825113463463731260859787782056531237844209715169310823415808" 1/289480223127650226926927462521719575564113062475688419430338621646831616" 1/578960446255300453853854925043439151128226124951376838860677243293663232" 1/1157920892510600907707709850086878302256452249902753677721354486587326464" 1/2315841785021201815415419700173756604512904499805507355442708973174652928" 1/4631683570042403630830839400347513209025808999611014710885417946349305856" 1/9263367140084807261661678800695026418051617999222029421770835892698611712" 1/18526734280169614523323357601390052836103235998444058843536671785397223424" 1/37053468560339229046646715202780105672206471996888117687073343570794446848" 1/74106937120678458093293430405560211344412943993776235374146687141588893696" 1/148213874241368916186586860811120422688825887987552470748293374283177787392" 1/29642774



# PIN CONTACT ASSEMBLY

CAT. NO. 100-8003 P

- ① PIN CONTACT (OUTER)  
PHOSPHOR BRONZE, QQ-B-750, GOLD OVER COPPER FLASH
- ② SOCKET CONTACT (INNER)  
BERYLLIUM COPPER, QQ-C-530, GOLD OVER COPPER FLASH
- ③ INSULATING SLEEVE (LONG)  
POLYPROPYLENE
- ④ CRIMP FERRULE  
BERYLLIUM COPPER, QQ-C-530, GOLD OVER COPPER FLASH
- ⑤ RETAINING CLIP  
BERYLLIUM COPPER, QQ-C-533, GOLD OVER COPPER FLASH

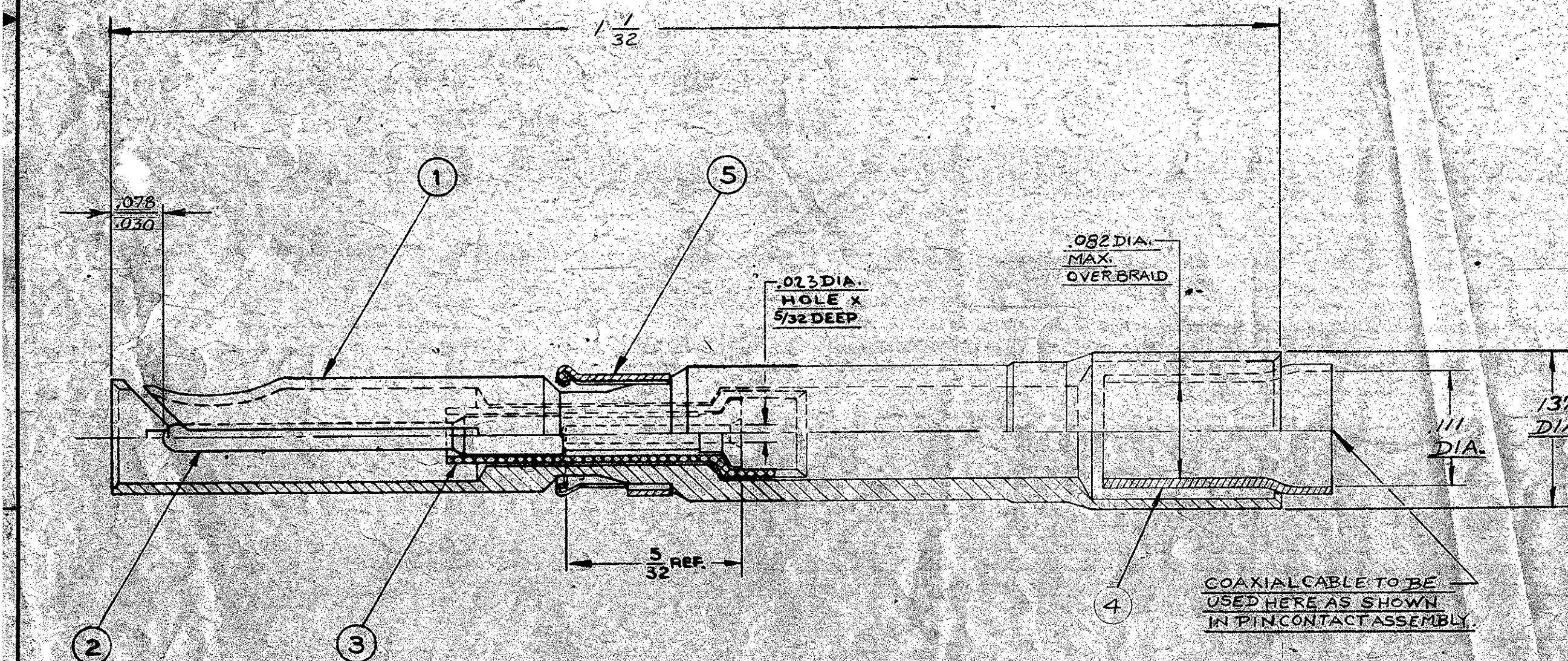


100-80  
SHEET #4 OF 7 E

# SOCKET CONTACT ASSEMBLY

CAT. NO. 100-8003 S

- ① SOCKET CONTACT (OUTER)  
BERYLLIUM COPPER, QQ-C-530, GOLD OVER COPPER FLASH
- ② PIN CONTACT (INNER)  
PHOSPHOR BRONZE, QQ-B-750, GOLD OVER COPPER FLASH
- ③ INSULATING SLEEVE (SHORT)  
POLYPROPYLENE
- ④ CRIMP FERRULE  
BERYLLIUM COPPER, QQ-C-530, GOLD OVER COPPER FLASH
- ⑤ RETAINING CLIP  
BERYLLIUM COPPER, QQ-C-533, GOLD OVER COPPER FLASH

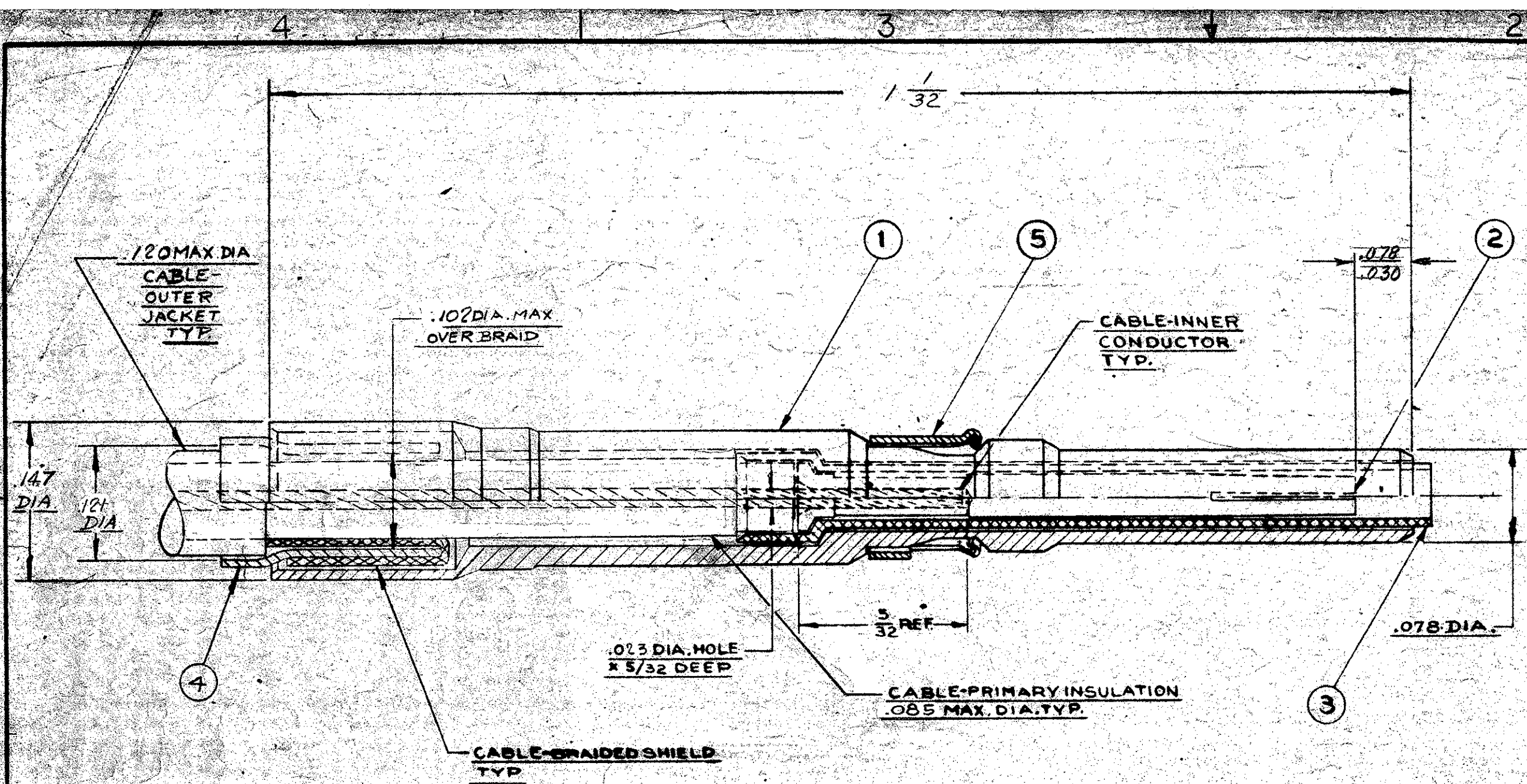


- GENERAL NOTES UNLESS OTHERWISE SPECIFIED
1. ALL DIMENSIONS ARE IN INCHES.
  2. ALL DIMENSIONS ARE
  3. REMOVE ALL BURRS TO MAX.
  4. BREAK ALL SHARP EDGES EQ. TO R. MAX.
  5. R. MAX. ON INSIDE CORNERS.
  6. ALL DIAMETERS CONCENTRIC T.I.R. MAX.
  7. ALL SURFACES TO BE SQUARE AND/OR PARALLEL WITHIN .001 IN. / IN.
  8. GENERAL SURFACE FINISH TO BE MICROINCHES RMS. MAX.
  9. TOLERANCES  
XXX ±.010  
XXX ±.003
  10. WEIGHT

TITLE OUTLINE ASSEMBLY — MRAC			
SHIELDED PIN & SOCKET CONTACT			
SCALE 10x1	DATE 6-23-66	DATE 7-5-66	DATE 11/1/66
WINCHESTER ELECTRONICS DIVISION OF LITTON PRECISION PRODUCTS INC. OAKVILLE, CONN.			
DWG. C	100-80	SHEET #4 OF 7	REV E

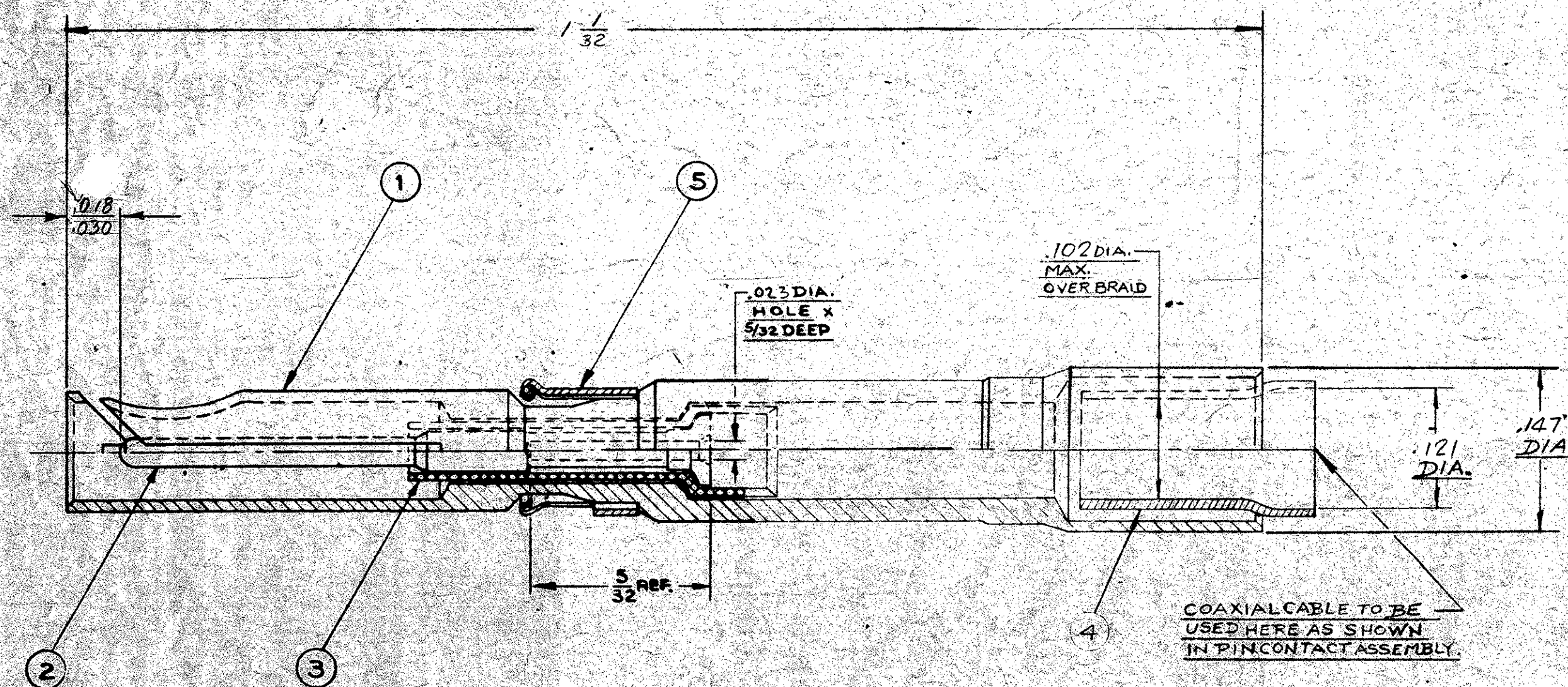
REV	CHANGE	DATE	BY	APP'D
A	PRELIMINARY REVISED	1/27/67	EN 1268	EN 1268
B	ADDED 0.078 DIA. DIA. 2 PLACES PER ECR #3443 EN 12674 (22)	6-2-71	S.K.	
D	REMOVED NOTE INACTIVE - NOT FOR PRODUCTION OR SALES AS OF 4/23/71 EN 12931 SEE SHEET 2 EWR # 220-86 EN 18847 J.L.L.	5-28-86	DONNA	
E	REMOVED 2 MAKE SURE NO. 2 FROM ECR # 4299	2-28-96	K.D.B.	





# **PIN CONTACT ASSEMBLY** CAT. NO. 100-8004P

- ① PIN CONTACT (OUTER)  
PHOSPHOR BRONZE, QQ-B-750, GOLD OVER COPPER FLASH
- ② SOCKET CONTACT (INNER)  
BERYLLIUM COPPER, QQ-C-530, GOLD OVER COPPER FLASH
- ③ INSULATING SLEEVE (LONG)  
POLYPROPYLENE
- ④ CRIMP FERRULE  
BERYLLIUM COPPER, QQ-C-530, GOLD OVER COPPER FLASH
- ⑤ RETAINING CLIP  
BERYLLIUM COPPER, QQ-C-533, GOLD OVER COPPER FLASH



# **SOCKET CONTACT ASSEMBLY** CAT. NO. 100-8004S

- ① SOCKET CONTACT (OUTER)  
BERYLLIUM COPPER, QQ-C-530, GOLD OVER COPPER FLASH
- ② PIN CONTACT (INNER)  
PHOSPHOR BRONZE, QQ-B-750, GOLD OVER COPPER FLASH
- ③ INSULATING SLEEVE (SHORT)  
POLYPROPYLENE
- ④ CRIMP FERRULE  
BERYLLIUM COPPER, QQ-C-530, GOLD OVER COPPER FLASH
- ⑤ RETAINING CLIP  
BERYLLIUM COPPER, QQ-C-533, GOLD OVER COPPER FLASH

P 100-80  
SHEET 5 OF 7 E

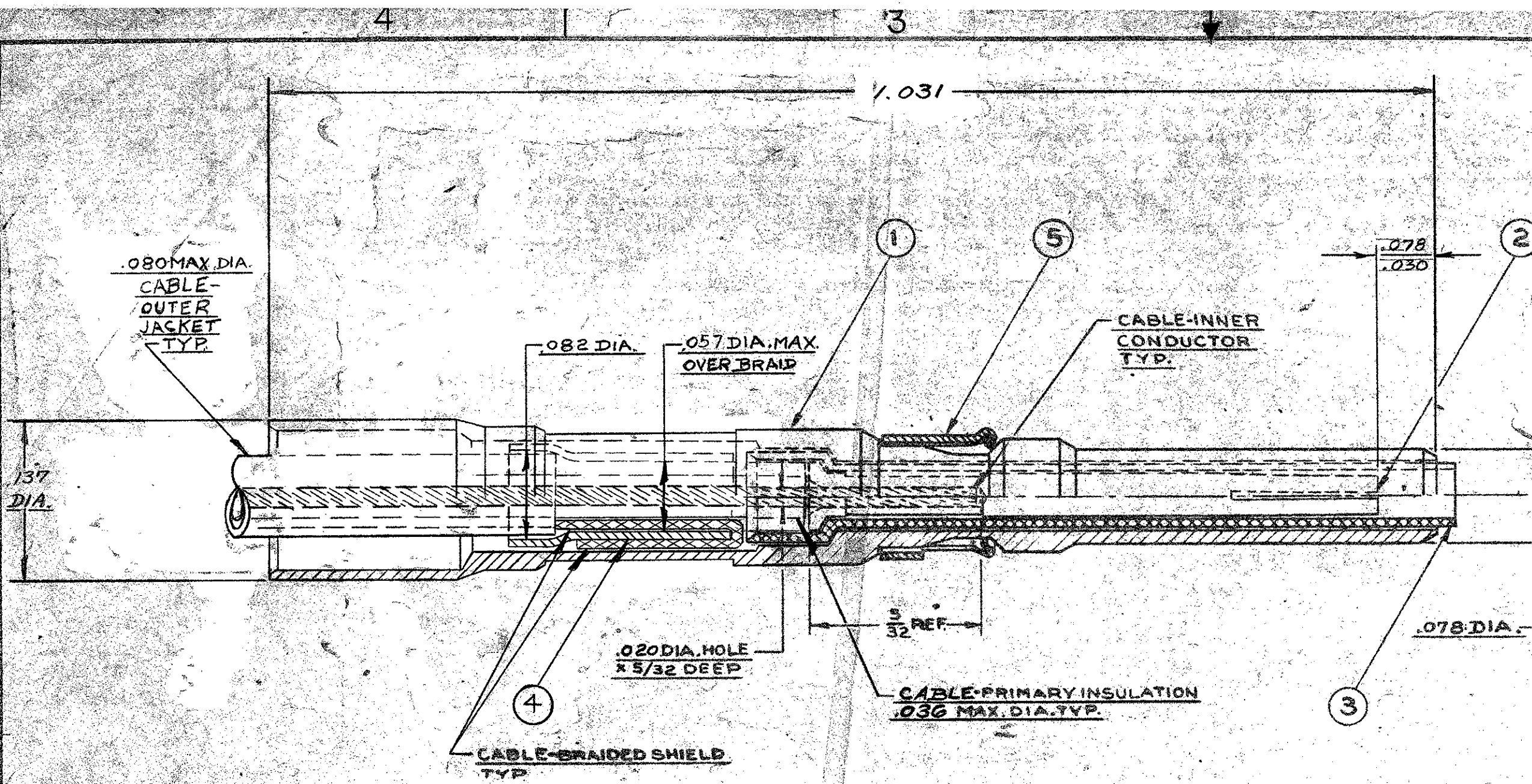
REV	CHANGE	DATE	BY	CHKD
A	ADDED 10/28/03 DIM. 2 PLACES PER ECR # 3443 EN 12874 260	6-2-71	S.K.	
D	SEE SHEETS 2 & 4 ENR #220-86 EN 18847 1122	5-28-86	DOWN	
E	SEE SHEETS 2 & 4 ENR #220-86 EN 18847 1122	2-28-96	K.D.B.	

**PRELIMINARY DRAWING**  
DO NOT USE FOR PRODUCTION

GENERAL NOTES UNLESS OTHERWISE SPECIFIED  
1. ALL DIMENSIONS ARE IN INCHES.  
2. ALL DIMENSIONS ARE TO MAX.  
3. REMOVE ALL BURRS TO MAX.  
4. BREAK ALL SHARP EDGES EQ. TO .015 IN. MAX.  
5. .015 IN. MAX. ON INSIDE CORNERS.  
6. ALL DIAMETERS CONCENTRIC T.I.R. MAX.  
7. ALL SURFACES TO BE SQUARE AND/OR PARALLEL WITHIN .005 IN./IN.  
8. GENERAL SURFACE FINISH TO BE MICROINCHES RMS. MAX.  
9. TOLERANCES  
XX .010  
XXX .003  
10. WEIGHT

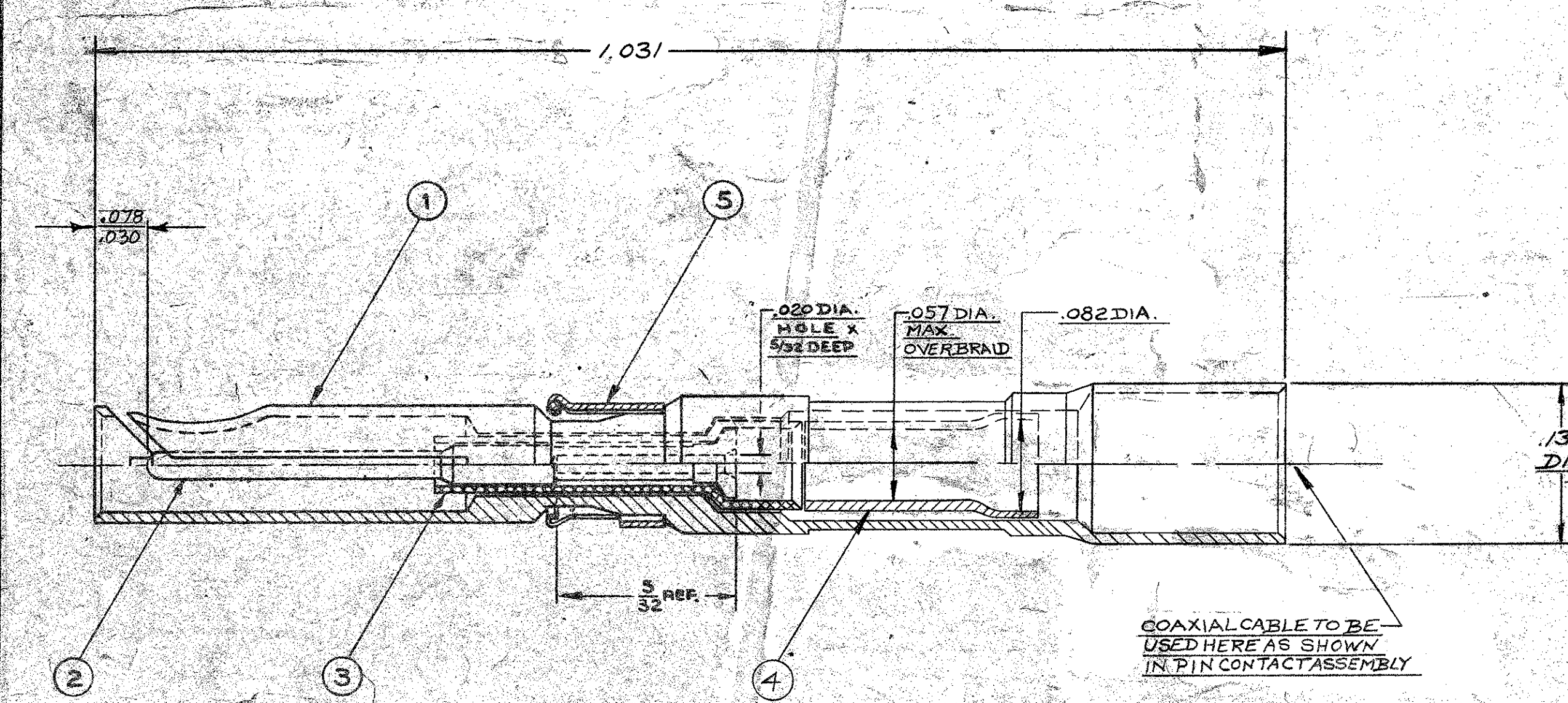
TITLE  
**OUTLINE ASSEMBLY — MRAC**  
**SHIELDED PIN & SOCKET CONTACT**  
SCALE  
10 X 1  
DATE 8-29-66  
WINCHESTER ELECTRONICS  
DIVISION OF LITTON PRECISION PRODUCTS INC.  
OAKVILLE, CONN.  
P 100-80  
SHEET 5 OF 7  
REV E





# **PIN CONTACT ASSEMBLY** CAT. NO. 100-8005 P

- 1 PIN CONTACT (OUTER)  
PHOSPHOR BRONZE, QQ-B-750, GOLD OVER COPPER FLASH
- 2 SOCKET CONTACT (INNER)  
BERYLLIUM COPPER, QQ-C-530, GOLD OVER COPPER FLASH
- 3 INSULATING SLEEVE (LONG)  
POLYPROPYLENE
- 4 CRIMP FERRULE  
BERYLLIUM COPPER, QQ-C-530, GOLD OVER COPPER FLASH
- 5 RETAINING CLIP  
BERYLLIUM COPPER, QQ-C-533, GOLD OVER COPPER FLASH



100-80  
SHEET # 6 OF 7 E

# **SOCKET CONTACT ASSEMBLY** CAT. NO. 100-8005 S

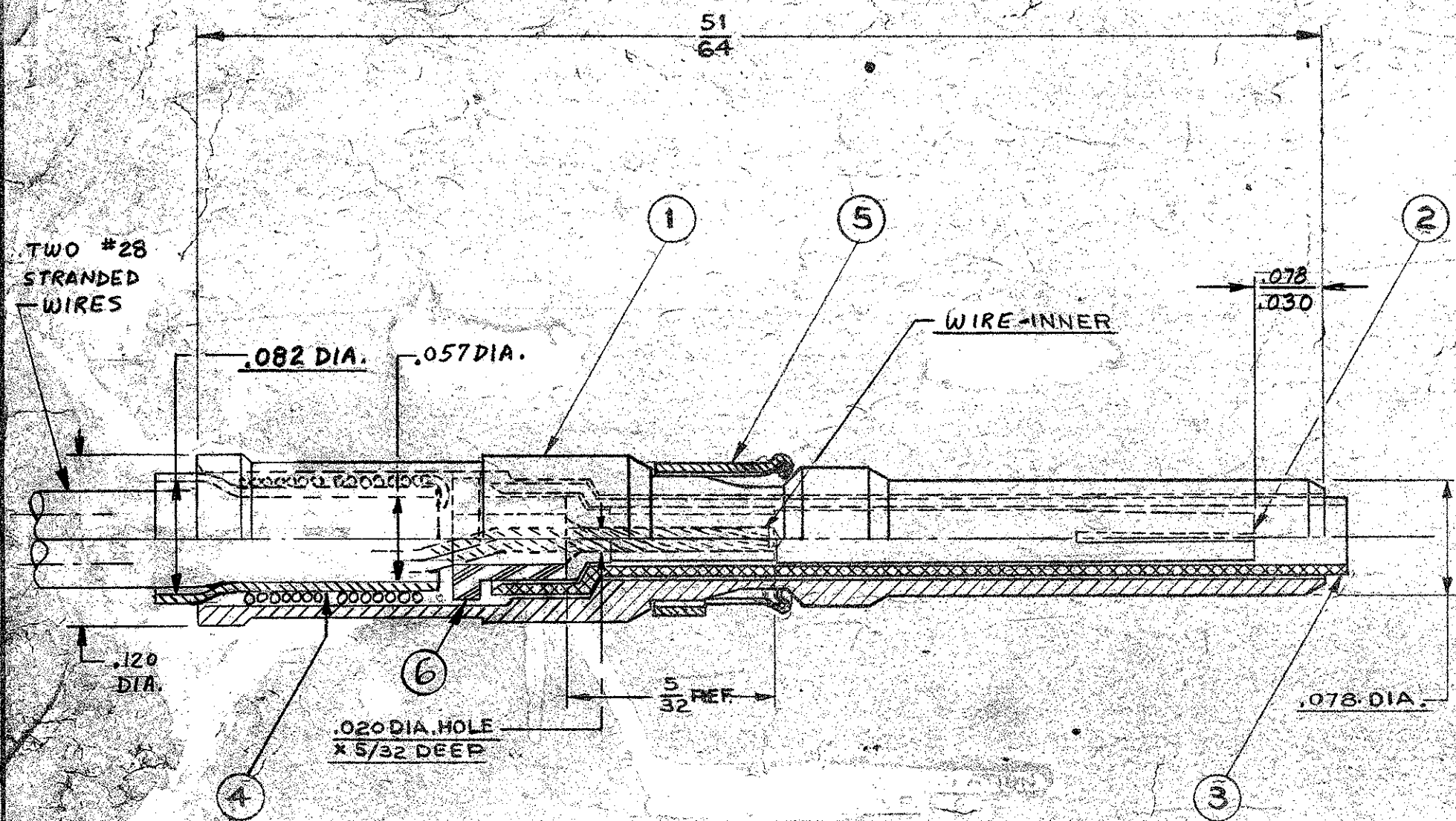
- 1 SOCKET CONTACT (OUTER)  
BERYLLIUM COPPER, QQ-C-530, GOLD OVER COPPER FLASH
- 2 PIN CONTACT (INNER)  
PHOSPHOR BRONZE, QQ-B-750, GOLD OVER COPPER FLASH
- 3 INSULATING SLEEVE (SHORT)  
POLYPROPYLENE
- 4 CRIMP FERRULE  
BERYLLIUM COPPER, QQ-C-530, GOLD OVER COPPER FLASH
- 5 RETAINING CLIP  
BERYLLIUM COPPER, QQ-C-533, GOLD OVER COPPER FLASH

REV.	CHANGE	DATE	BY	CHK.
A	.057 DIA. MAX. OVER BRAID MAX. .060 DIA. MAX. OVER BRAID MAX. EN 11807	9-25-68	J.K.	J.K.
B	ADDED .078 .030 DIA. 2 PLACES PER ECR #220-86 EN 12814	6-2-71	S.K.	S.K.
D	SEE SHEETS 2 & 4 ECR #220-86 EN 18847	5-28-86	DOWNA	K.D.B.
E	SEE SHEETS 2 & 4 ECR #220-86 EN 18847	2-28-94	K.D.B.	K.D.B.

GENERAL NOTES UNLESS OTHERWISE SPECIFIED  
 1. ALL DIMENSIONS ARE IN INCHES.  
 2. ALL DIMENSIONS ARE  
 3. REMOVE ALL BURRS TO .005 MAX.  
 4. BREAK ALL SHARP EDGES EQ. TO .005 R. MAX. ON INSIDE CORNERS.  
 5. .005 R. MAX. ON INSIDE CORNERS.  
 6. ALL DIAMETERS CONCENTRIC T.I.R. MAX.  
 7. ALL SURFACES TO BE SQUARE AND/OR PARALLEL WITHIN .005 IN./IN.  
 8. GENERAL SURFACE FINISH TO BE MICROINCHES RMS. MAX.  
 9. TOLERANCES  
 XX ±.010  
 XXX ±.003  
 10. WEIGHT  
 FRACTIONS  
 ±1/16  
 ANGLES  
 ±1/4  
 EN-11397

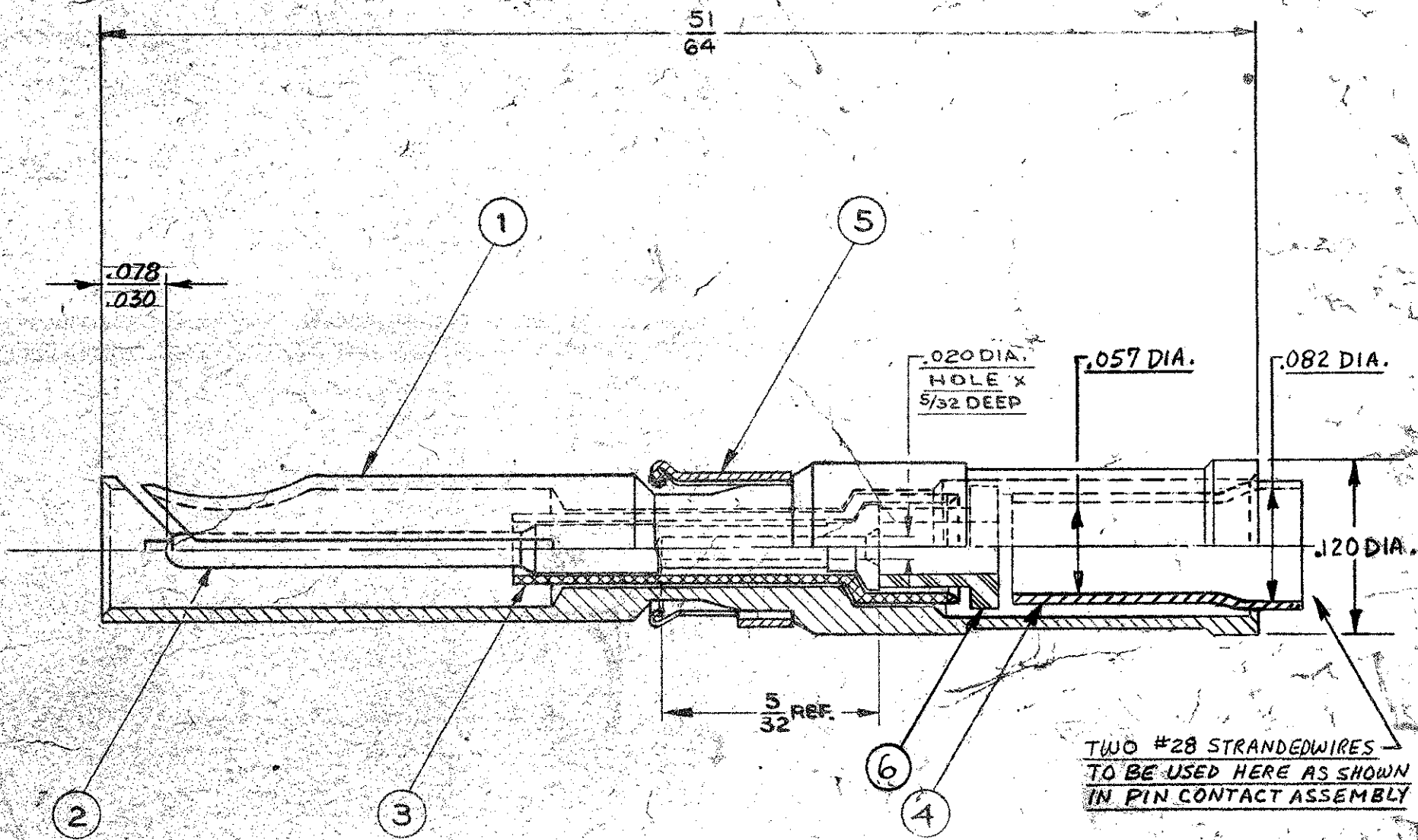
TITLE OUTLINE ASSEMBLY - NTRAC			
SHIELDED PIN & SOCKET CONTACT			
SCALE 10 X 1	DR. DALEY	CHK. ZIEM	APP. MC
DATE 2-16-67	DATE 2-27-67	DATE 2/16/67	
WINCHESLER ELECTRONICS DIVISION OF LITTON PRECISION PRODUCTS INC. GASVILLE, CONN.			
DWG. C	100-80 SHEET # 6 OF 7		E





**PIN CONTACT ASSEMBLY**  
CAT. NO. 100-8006 P

- ① PIN CONTACT (OUTER)  
PHOSPHOR BRONZE, QQ-B-750, GOLD OVER COPPER FLASH
- ② SOCKET CONTACT (INNER)  
BERYLLIUM COPPER, QQ-C-530, GOLD OVER COPPER FLASH
- ③ INSULATING SLEEVE (LONG)  
POLYPROPYLENE
- ④ CRIMP FERRULE  
BERYLLIUM COPPER, QQ-C-530, GOLD OVER COPPER FLASH
- ⑤ RETAINING CLIP  
BERYLLIUM COPPER, QQ-C-533, GOLD OVER COPPER FLASH
- ⑥ BUSHING, DIELECTRIC  
THERMOPLASTIC MATERIAL



**SOCKET CONTACT ASSEMBLY**  
CAT. NO. 100-8006 S

- ① SOCKET CONTACT (OUTER)  
BERYLLIUM COPPER, QQ-C-530, GOLD OVER COPPER FLASH
- ② PIN CONTACT (INNER)  
PHOSPHOR BRONZE, QQ-B-750, GOLD OVER COPPER FLASH
- ③ INSULATING SLEEVE (SHORT)  
POLYPROPYLENE
- ④ CRIMP FERRULE  
BERYLLIUM COPPER, QQ-C-530, GOLD OVER COPPER FLASH
- ⑤ RETAINING CLIP  
BERYLLIUM COPPER, QQ-C-533, GOLD OVER COPPER FLASH
- ⑥ BUSHING, DIELECTRIC  
THERMOPLASTIC MATERIAL

100-80 E  
SHEET #7 OF 7

- GENERAL NOTES UNLESS OTHERWISE SPECIFIED
1. ALL DIMENSIONS ARE IN INCHES.
  2. ALL DIMENSIONS ARE
  3. REMOVE ALL BURRS TO MAX.
  4. BREAK ALL SHARP EDGES EQ. TO R. MAX.
  5. R. MAX. ON INSIDE CORNERS.
  6. ALL DIAMETERS CONCENTRIC T.I.R. MAX.
  7. ALL SURFACES TO BE SQUARE AND/OR PARALLEL WITHIN .001 IN. IN.
  8. GENERAL SURFACE FINISH TO BE MICROINCHES RMS. MAX.
  9. TOLERANCES: .XX ±.010, .XXX ±.003
  10. WEIGHT

TITLE: OUTLINE ASSEMBLY - MRAC SHIELDED PIN & SOCKET CONTACT			
MATERIAL: SEE ABOVE			
FINISH: SEE ABOVE			
SCALE: 10:1	DR: JAC	CHKD: S. JAC	AP'D: JAC
DATE: 12/17/70	DATE: 12-28-70	DATE: 12/28/70	
WINCHESTER ELECTRONICS DIVISION OF LITTON PRECISION PRODUCTS INC. DARVILLE, CONN.			
DWG. NO. C	100-80 SHEET #7 OF 7		REV E