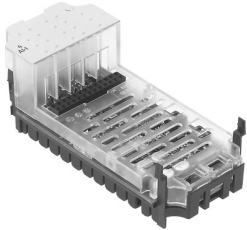


Analogue module CPX-4AE-I

Part number: 541484

FESTO



Data sheet

Feature	Value
Dimensions W x L x H	(incl. interlinking block and connection system) 50 mm x 107 mm x 50 mm
Type code	CPX
No. of inputs	4
Diagnostics	Wire break per channel Limit value violation per channel Short circuit, input signal Parameterization error
Parameterization	Data format Forcing per channel Limit value monitoring per channel Measured value smoothing Signal range per channel Response to short circuit Wire break monitoring per channel
LED indicators	1 group diagnostics
Internal cycle time	10 ms
Repetition accuracy	0.15 % at 25 °C
Fuse protection (short circuit)	Internal electronic fuse
DC operating voltage range	18 V ... 30 V
Intrinsic current consumption at nominal operating voltage	Typ. 50 mA
Operating error limit related to the ambient temperature range	±0.6 %
Basic error limit at 25°C	±0.5 %
Nominal operating voltage DC	24 V
Electrical isolation between channel and internal bus	Yes, without using the internal sensor supply
Electrical isolation between channels	no
Corrosion resistance class (CRC)	1 - Low corrosion stress (when installed)
Storage temperature	-20 °C ... 70 °C
Degree of protection	Depends on manifold block
Ambient temperature	-5 °C ... 50 °C
Product weight	47 g
Data format	12 bit + sign Scalable to 15 bits
Max. cable length	30 m Shielded
Sensor type	0 - 20 mA 4 - 20 mA
Housing material	PA-reinforced PC