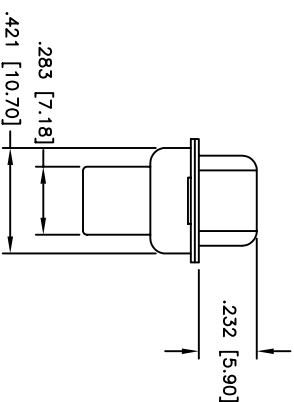
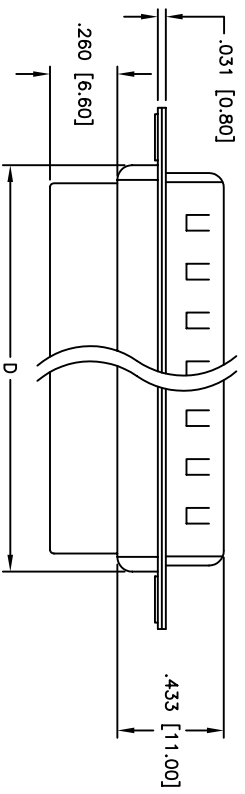
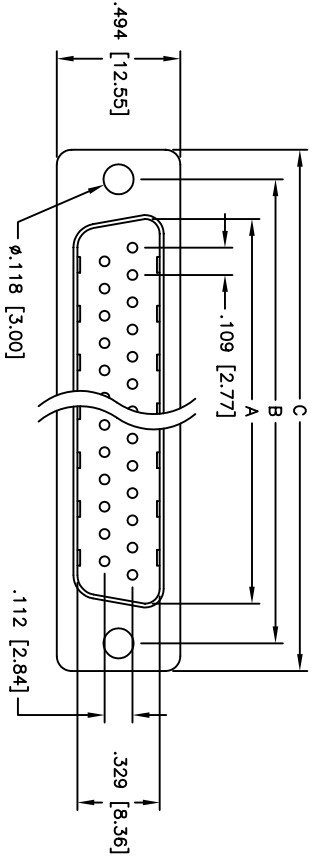


Rev	AWO #	Description	Date	Appr
-		RELEASED	4/29/05	

APPROVED: \_\_\_\_\_  
 DATE: \_\_\_\_\_ TITLE: \_\_\_\_\_



Positions	PLUG				DIMENSIONS			
	A	B	C	D	A	B	C	D
9	.666 [16.92]	.984 [24.99]	1.213 [30.81]	.756 [19.20]				
15	.994 [25.25]	1.312 [33.32]	1.541 [39.14]	1.091 [27.70]				
25	1.534 [38.96]	1.852 [47.04]	2.088 [53.04]	1.618 [41.10]				
37	2.182 [55.43]	2.500 [63.50]	2.729 [69.32]	2.256 [57.30]				
50	2.079 [52.81]	2.406 [61.11]	2.637 [67.00]	2.169 [55.10]				

Unit: Inch / mm

**SPECIFICATIONS:**

- Material: Insulator: PBT, glass reinforced, rated UL 94V-0
- Insulator color: Black
- Contacts: Phosphor Bronze
- Shell: Steel, Tin plated
- Plating: Gold flash over Nickel underplate overall
- Electrical: Operating voltage: 250 VAC max
- Current rating: 5 Amps max
- Contact resistance: 20 mohms max
- Insulation resistance: 5,000 Mohms min
- Dielectric withstanding voltage: 1,000 VAC for 1 minute
- Temperature Rating: Operating temperature: -65°C to +125°C
- Environmental: Lead free, RoHS compliant



**ADAM TECH**

909 Rahway Avenue, Union, NJ 07083  
 Phone: 908-687-5000 Fax: 908-687-5710

TITLE: D-SUB PLUG, CRIMP AND POKE  
 .118 [3.00] MOUNTING HOLES

UNLESS OTHERWISE SPECIFIED ALL DIMENSIONS ARE INCHES [MM]		TOLERANCES: EXCEPT AS NOTED	
INCHES		Holes	
.X	± .10	ØX	± .10
.XX	± .020	ØXXX	± .015
.XXX	± .015	ØXXXX	± .010
APPROVALS	DATE	TITLE	
DRAWN	SS	4/29/05	SIZE
CHECKED			PART NO.
APPROVED			DXXX-PR
REF:		SCALE:	NTS
		SHEET	1 OF 1