

DASH NO. RANGE	"D" DIA. RANGE	"E" DIMENSION	"R" RADIUS	"T" GAUGE
-4 THRU -16	1/4" TO 1"	"D"/2 + .514	.06	.050
-17 THRU -96	1-1/16" TO 6"	"D"/2 + .534	.11	.062

MATERIAL & FINISH CODES:

METAL:	"NO CODE"	1008/1020 LOW CARBON STEEL PER ASTM A 1008, ASTM A 109, QQ-S-698 FINISH: ZINC PLATE GOLD PER ASTM B 633, Fe/Zn 8, TY. II
	"P"	1008/1020 LOW CARBON STEEL PER ASTM A 1008, ASTM A 109, QQ-S-698 FINISH: ZINC PLATE GOLD PLUS SEALER PER ASTM B 633, Fe/Zn 13, TY. II
	"D"	2024-T42 ALUMINUM ALLOY PER AMS-QQ-A-250/5 FINISH: NONE
	"SS"	304/321 STAINLESS STEEL PER AMS 5513/AMS 5510 FINISH: NONE
	"C"	316 STAINLESS STEEL PER AMS 5524 FINISH: NONE
CUSHION:	"G"	GENERAL PURPOSE EPDM PER SAE J200 M3 BA 710 C12 COLOR: BLACK
	"H"	GENERAL PURPOSE SILICONE PER AMS 3303 WITH 100 PSI MIN. TEAR COLOR: RED/ORANGE
	"N"	GENERAL PURPOSE NEOPRENE PER AMS 3209 COLOR: BLACK

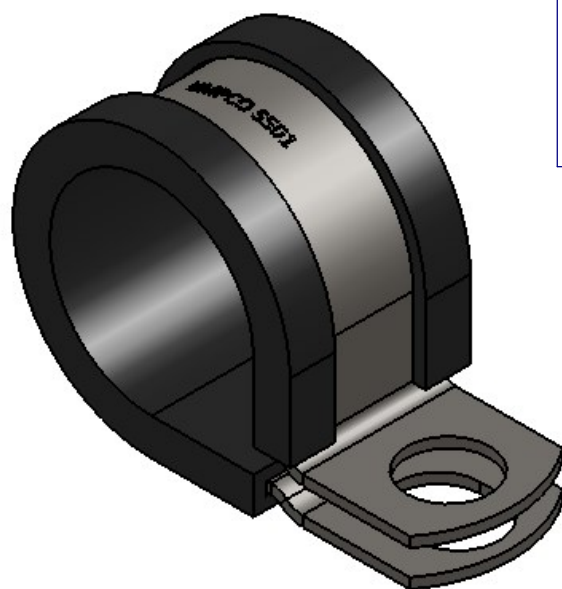
EXAMPLE OF PART CALLOUT:

1" DIA. ALUM. CLAMP W/EPDM CUSHION

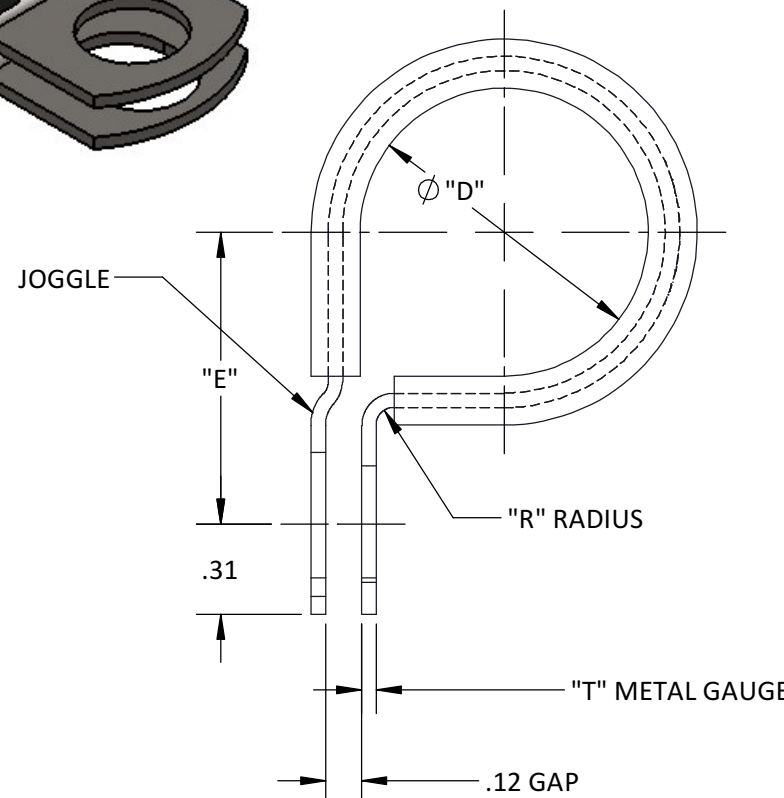
S501	D	G	16
DIA "D" IN 1/16" INCREMENTS			
CUSHION CODE			
METAL CODE (OMIT FOR "NO CODE")			
BASIC DRAWING NUMBER			

NOTES:

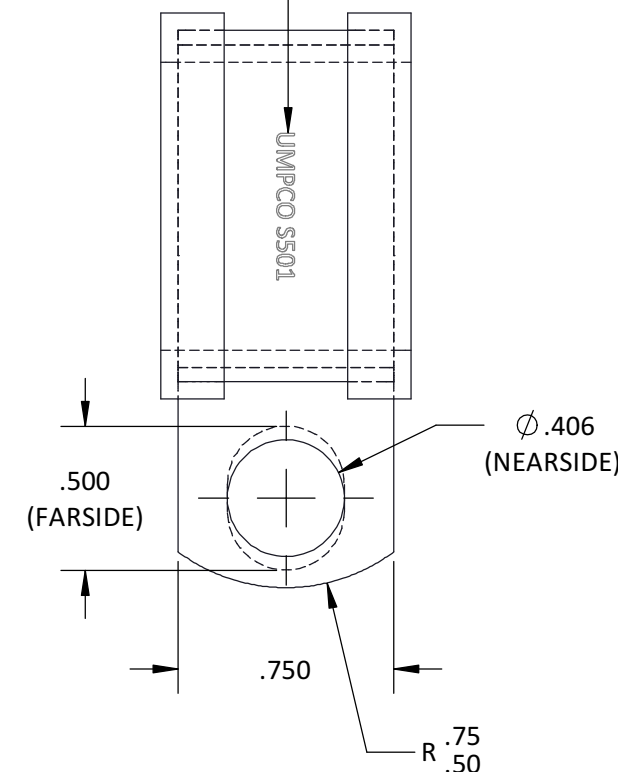
- 1) CLAMPS FURNISHED IN THE NORMAL OPEN (SPRINGBACK) CONDITION.
- 2) INSPECT PER MIL-C-8603 CLOSURE TEST.




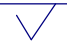
S501



STEEL STAMP "UMPCO"
& PART NUMBER



SHEET 1 OF 1

REFERENCES:											
LIMITS ON DIMENSIONS UNLESS OTHERWISE SPECIFIED:	ANGULAR: X ± 5° DECIMAL: .XX ± .03 .XXX ± .015	 UMPCO . INC. 7100 LAMPSON AVE. P.O. BOX 5158 GARDEN GROVE, CA. 92846	FSCM/CAGE CODE No. 18076								
GENERAL MACHINE FINISHES EXCEPT AS NOTED:  INTERPRET GEOMETRIC TOLERANCING PER: ASME-Y14.5M	<small>PROPRIETARY AND CONFIDENTIAL</small> <small>THE INFORMATION CONTAINED IN THIS DRAWING IS THE SOLE PROPERTY OF UMPCO, INC. ANY REPRODUCTION IN PART OR AS A WHOLE WITHOUT THE WRITTEN PERMISSION OF UMPCO, INC IS PROHIBITED.</small>		<table border="1"> <tr> <td>KEL</td> <td>KEL</td> <td>KEL</td> </tr> <tr> <td>03/27/78</td> <td>03/27/78</td> <td>03/27/78</td> </tr> <tr> <td>DRAWN</td> <td>CHECKED</td> <td>ENGR</td> </tr> </table>	KEL	KEL	KEL	03/27/78	03/27/78	03/27/78	DRAWN	CHECKED
KEL	KEL	KEL									
03/27/78	03/27/78	03/27/78									
DRAWN	CHECKED	ENGR									
REMOVE ALL BURRS AND BREAK SHARP EDGES .010 MAX	ACT. WGHT. - CALC. WGHT. -	CLAMP, LOOP-CUSHIONED, FOR 3/8 MOUNTING BOLT	<table border="1"> <tr> <td>SIZE</td> <td>SCALE: NONE</td> </tr> <tr> <td>B</td> <td>S501</td> </tr> <tr> <td colspan="2">PART AND/OR ASSEMBLY DESCRIPTION</td> </tr> <tr> <td colspan="2">PRINT NUMBER</td> </tr> </table>	SIZE	SCALE: NONE	B	S501	PART AND/OR ASSEMBLY DESCRIPTION		PRINT NUMBER	
SIZE	SCALE: NONE										
B	S501										
PART AND/OR ASSEMBLY DESCRIPTION											
PRINT NUMBER											

1

2

3

4

5

6

7

8