

Aluminum Capacitors

Power Miniaturized Economy Long Life Snap-In


RoHS
 COMPLIANT

FEATURES

- Polarized aluminum electrolytic capacitors, non-solid electrolyte
- Large types, miniaturized dimensions, cylindrical aluminum case, insulated with a blue sleeve
- Useful life: 2000 h at 105 °C
- Compliant to RoHS Directive 2002/95/EC

APPLICATIONS

- Consumer and telecom
- Whitegood motor control
- Electronic drives
- SMPS/UPS

MARKING

The capacitors are marked (where possible) with the following information:

- Rated capacitance (in μF)
- Tolerance code on rated capacitance, code letter in accordance with IEC 60062 (M for $\pm 20\%$)
- Rated voltage (in V)
- Name of manufacturer
- Date code
- “-” sign to identify the negative terminal, visible from the top and side of the capacitor
- Code number (last 8 digits)
- Maximum operating temperature

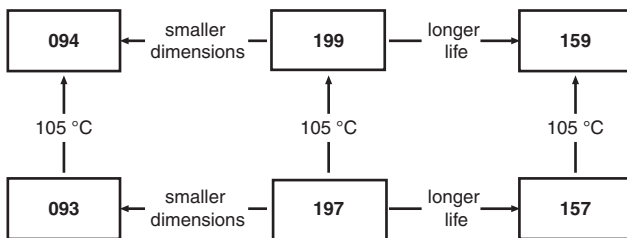
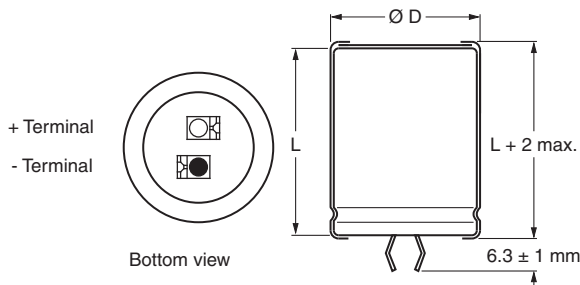


Fig. 1

QUICK REFERENCE DATA	
DESCRIPTION	VALUE
Nominal case size (\varnothing D x L in mm)	22 x 25 to 35 x 60
Rated capacitance range, C_R	56 μF to 2200 μF
Tolerance on C_R	$\pm 20\%$
Rated voltage range, U_R	200 V to 450 V
Category temperature range	- 25 °C to + 105 °C
Useful life at 105 °C	2000 h
Useful life at 40 °C and 1.6 x I_R applied	180 000 h
Shelf life at 0 V, 105 °C	500 h
Based on sectional specification	IEC 60384-4/EN130300/W of JISC5141

C_R (μF)	U_R (V)				
	200	250	400	420	450
56	-	-	22 x 25	22 x 25	22 x 25
68	-	-	22 x 25	22 x 25	22 x 25
82	-	-	22 x 25	22 x 25	22 x 30
	-	-	-	-	25 x 25
100	-	-	22 x 25	22 x 30	22 x 30
	-	-	-	25 x 25	25 x 25
120	-	-	22 x 30	22 x 30	22 x 35
	-	-	25 x 25	25 x 25	25 x 30

SELECTION CHART FOR C_R, U_R AND RELEVANT NOMINAL CASE SIZES ($\varnothing D \times L$ in mm)					
C_R (μF)	U_R (V)				
	200	250	400	420	450
150	-	-	22 x 35	22 x 35	22 x 40
	-	-	-	25 x 30	25 x 30
	-	-	-	-	30 x 25
180	-	-	30 x 25	22 x 40	22 x 50
	-	-	-	25 x 30	25 x 35
	-	-	-	30 x 25	30 x 25
220	22 x 25	22 x 30	22 x 50	22 x 50	25 x 40
	-	-	25 x 35	25 x 40	30 x 30
	-	-	30 x 25	30 x 30	35 x 25
	-	-	-	35 x 25	-
270	22 x 25	22 x 30	30 x 30	25 x 50	25 x 50
	-	-	35 x 25	-	30 x 35
	-	-	-	-	35 x 30
330	22 x 30	22 x 35	25 x 50	35 x 30	30 x 45
	-	-	30 x 35	-	35 x 35
	-	-	35 x 30	-	-
390	22 x 35	25 x 30	30 x 40	35 x 35	30 x 50
	25 x 30	-	35 x 30	-	35 x 40
470	22 x 35	25 x 35	30 x 45	35 x 40	35 x 45
	25 x 30	-	35 x 35	-	-
560	25 x 30	25 x 40	30 x 50	35 x 45	35 x 50
	-	-	35 x 40	-	-
680	22 x 50	30 x 30	35 x 45	35 x 50	35 x 60
	25 x 40	-	-	-	-
820	30 x 30	-	-	-	-
1000	25 x 50	30 x 45	-	-	-
	30 x 35	-	-	-	-
1200	30 x 40	35 x 40	-	-	-
1500	30 x 50	35 x 45	-	-	-
	35 x 40	-	-	-	-
1800	-	35 x 50	-	-	-
2200	35 x 50	-	-	-	-

DIMENSIONS in millimeters AND AVAILABLE FORMS


The minus and/or plus terminal can be marked with an imprinted sign.

Fig. 2 - Two terminal snap-in

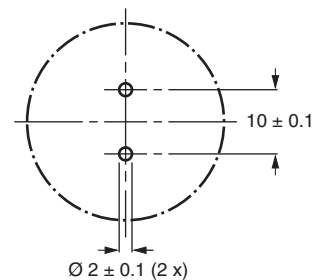


Fig. 3 - Mounting hole diagram



Table 1

DIMENSIONS in millimeters, MASS AND PACKAGING QUANTITIES					
NOMINAL CASE SIZE Ø D x L	Ø D _{max.}	L _{max.}	MASS (g)	PACKAGING QUANTITIES	CARDBOARD BOX DIMENSIONS L x W x H
22 x 25	22.5	26.5	≈ 12	216	280 x 240 x 140
22 x 30	22.5	31.5	≈ 16	216	280 x 240 x 140
22 x 35	22.5	36.5	≈ 20	144	280 x 240 x 105
22 x 40	22.5	41.5	≈ 23	144	280 x 240 x 105
22 x 45	22.5	46.5	≈ 26	144	280 x 240 x 140
22 x 50	22.5	51.5	≈ 29	72	280 x 240 x 105
25 x 25	25.5	26.5	≈ 20	216	280 x 240 x 140
25 x 30	25.5	33.5	≈ 22	216	280 x 240 x 140
25 x 35	25.5	36.5	≈ 24	144	280 x 240 x 105
25 x 40	25.5	41.5	≈ 27	144	280 x 240 x 105
25 x 45	25.5	46.5	≈ 32	144	280 x 240 x 140
25 x 50	25.5	51.5	≈ 38	144	280 x 240 x 140
30 x 25	30.5	28.5	≈ 25	168	280 x 240 x 140
30 x 30	30.5	33.5	≈ 30	168	280 x 240 x 140
30 x 35	30.5	38.5	≈ 35	112	280 x 240 x 105
30 x 40	30.5	42.5	≈ 40	112	280 x 240 x 105
30 x 45	30.5	47.5	≈ 45	112	280 x 240 x 140
30 x 50	30.5	52.5	≈ 50	112	280 x 240 x 140
35 x 25	35.5	26.5	≈ 33	126	280 x 240 x 140
35 x 30	35.5	33.5	≈ 40	126	280 x 240 x 140
35 x 35	35.5	36.5	≈ 48	84	280 x 240 x 105
35 x 40	35.5	42.5	≈ 55	84	280 x 240 x 105
35 x 45	35.5	47.5	≈ 63	84	280 x 240 x 140
35 x 50	35.5	52.5	≈ 72	84	280 x 240 x 140
35 x 60	36.5	62.5	≈ 87	42	280 x 240 x 105

ELECTRICAL DATA	
SYMBOL	DESCRIPTION
C _R	Rated capacitance at 120 Hz
I _R	Rated RMS ripple current at 120 Hz, 105 °C
I _{L5}	Max. leakage current after 5 min at U _R
ESR	Max. equivalent series resistance at 120 Hz ⁽¹⁾

Note

- ⁽¹⁾ ESR at 100 Hz is approximately 1.05 x ESR 120 Hz
- Unless otherwise specified, all electrical values in Table 2 apply at T_{amb} = 20 °C, P = 86 kPa to 106 kPa, RH = 45 % to 75 %

ORDERING EXAMPLE

Electrolytic capacitor 094 series
 330 µF/400 V; ± 20 %
 Nominal case size: Ø 25 mm x 50 mm
 2-terminal snap-in:
 Ordering code: MAL2 094 46331 E3
 Former 12NC: 2222 094 46331



Table 2

ELECTRICAL DATA AND ORDERING INFORMATION							
U_R (V)	C_R 120 Hz (μ F)	NOMINAL CASE SIZE \varnothing D x L (mm)	I_R 120 Hz (A)	I_{L5} (mA)	MAX. ESR 120 Hz ⁽¹⁾ (Ω)	MAX. Z 10 kHz (Ω)	ORDERING CODE MAL2094.....
200	220	22 x 25	1.04	0.88	0.46	0.30	52221E3
	270	22 x 25	1.12	1.08	0.40	0.26	52271E3
	330	22 x 30	1.30	1.32	0.32	0.21	52331E3
	390	22 x 35	1.49	1.50	0.27	0.17	52391E3
	390	25 x 30	1.47	1.50	0.27	0.18	42391E3
	470	22 x 35	1.58	1.50	0.24	0.15	52471E3
	470	25 x 30	1.55	1.50	0.24	0.16	42471E3
	560	25 x 30	1.61	1.50	0.22	0.15	42561E3
	680	22 x 50	1.96	1.50	0.16	0.10	52681E3
	680	25 x 40	1.98	1.50	0.17	0.11	42681E3
	820	30 x 30	1.86	1.50	0.18	0.13	32821E3
	1000	25 x 50	2.56	1.50	0.12	0.08	42102E3
	1000	30 x 35	2.04	1.50	0.16	0.12	32102E3
	1200	30 x 40	2.35	1.50	0.13	0.09	32122E3
	1500	30 x 50	2.87	1.50	0.10	0.07	32152E3
1500	35 x 40	2.54	1.50	0.13	0.09	22152E3	
2200	35 x 50	3.02	1.50	0.10	0.07	22222E3	
250	220	22 x 30	1.33	1.10	0.41	0.25	53221E3
	270	22 x 30	1.22	1.35	0.35	0.22	53271E3
	330	22 x 35	1.40	1.50	0.29	0.18	53331E3
	390	25 x 30	1.46	1.50	0.26	0.17	43391E3
	470	25 x 35	1.64	1.50	0.22	0.14	43471E3
	560	25 x 40	1.87	1.50	0.19	0.12	43561E3
	680	30 x 30	1.76	1.50	0.20	0.14	33681E3
	1000	30 x 45	2.48	1.50	0.13	0.09	33102E3
	1200	35 x 40	2.47	1.50	0.13	0.10	23122E3
	1500	35 x 45	2.73	1.50	0.12	0.09	23152E3
1800	35 x 50	2.96	1.50	0.10	0.07	23182E3	
400	56	22 x 25	0.53	0.45	2.39	1.79	56569E3
	68	22 x 25	0.58	0.54	1.98	1.49	56689E3
	82	22 x 25	0.64	0.66	1.66	1.25	56829E3
	100	22 x 25	0.68	0.80	1.51	1.16	56101E3
	120	22 x 30	0.79	0.96	1.16	0.87	56121E3
	120	25 x 25	0.79	0.96	1.17	0.89	46121E3
	150	22 x 35	0.92	1.20	0.92	0.69	56151E3
	180	30 x 25	1.03	1.44	0.81	0.62	36181E3
	220	22 x 50	1.15	1.50	0.59	0.44	56221E3
	220	25 x 35	1.11	1.50	0.68	0.52	46221E3
	220	30 x 25	1.08	1.50	0.71	0.55	36221E3
	270	30 x 30	1.26	1.50	0.55	0.42	36271E3
	270	35 x 25	1.25	1.50	0.63	0.50	26271E3
	330	25 x 50	1.61	1.50	0.43	0.33	46331E3
	330	30 x 35	1.41	1.50	0.47	0.37	36331E3
	330	35 x 30	1.50	1.50	0.46	0.36	26331E3
	390	30 x 40	1.62	1.50	0.39	0.30	36391E3
	390	35 x 30	1.56	1.50	0.43	0.34	26391E3
	470	30 x 45	1.82	1.50	0.33	0.26	36471E3
	470	35 x 35	1.70	1.50	0.37	0.30	26471E3
	560	30 x 50	2.03	1.50	0.29	0.23	36561E3
	560	35 x 40	1.95	1.50	0.30	0.24	26561E3
680	35 x 45	2.15	1.50	0.26	0.21	26681E3	



ELECTRICAL DATA AND ORDERING INFORMATION							
U _R (V)	C _R 120 Hz (μF)	NOMINAL CASE SIZE Ø D x L (mm)	I _R 120 Hz (A)	I _{L5} (mA)	MAX. ESR 120 Hz ⁽¹⁾ (Ω)	MAX. Z 10 kHz (Ω)	ORDERING CODE MAL2094.....
420	56	22 x 25	0.54	0.47	2.24	1.64	54569E3
	68	22 x 25	0.59	0.57	1.86	1.36	54689E3
	82	22 x 25	0.64	0.69	1.60	1.20	54829E3
	100	22 x 30	0.74	0.84	1.27	0.93	54101E3
	100	25 x 25	0.74	0.84	1.29	0.96	44101E3
	120	22 x 30	0.79	1.01	1.15	0.87	54121E3
	120	25 x 25	0.79	1.01	1.16	0.89	44121E3
	150	22 x 35	0.92	1.26	0.91	0.69	54151E3
	150	25 x 30	0.93	1.26	0.86	0.64	44151E3
	180	22 x 40	1.06	1.50	0.76	0.57	54181E3
	180	25 x 30	1.00	1.50	0.78	0.59	44181E3
	180	30 x 25	1.03	1.50	0.76	0.58	34181E3
	220	22 x 50	1.15	1.50	0.59	0.44	54221E3
	220	25 x 40	1.22	1.50	0.59	0.44	44221E3
	220	30 x 30	1.19	1.50	0.59	0.44	34221E3
	220	35 x 25	1.19	1.50	0.67	0.52	24221E3
	270	25 x 50	1.50	1.50	0.47	0.34	44271E3
	330	35 x 30	1.49	1.50	0.45	0.35	24331E3
	390	35 x 35	1.65	1.50	0.39	0.31	24391E3
	470	35 x 40	1.86	1.50	0.32	0.25	24471E3
560	35 x 45	2.06	1.50	0.27	0.21	24561E3	
680	35 x 50	2.30	1.50	0.23	0.18	24681E3	
450	56	22 x 25	0.55	0.50	2.06	1.46	57569E3
	68	22 x 25	0.59	0.61	1.72	1.23	57689E3
	82	22 x 30	0.68	0.74	1.41	1.01	57829E3
	82	25 x 25	0.68	0.74	1.43	1.03	47829E3
	100	22 x 30	0.74	0.90	1.25	0.92	57101E3
	100	25 x 25	0.74	0.90	1.25	0.91	47101E3
	120	22 x 35	0.85	1.08	1.01	0.73	57121E3
	120	25 x 30	0.86	1.08	0.98	0.70	47121E3
	150	22 x 40	0.99	1.35	0.81	0.59	57151E3
	150	25 x 30	0.93	1.35	0.83	0.61	47151E3
	150	30 x 25	0.97	1.35	0.83	0.61	37151E3
	180	22 x 50	1.07	1.50	0.64	0.45	57181E3
	180	25 x 35	1.05	1.50	0.73	0.53	47181E3
	180	30 x 25	1.03	1.50	0.75	0.56	37181E3
	220	25 x 40	1.20	1.50	0.60	0.44	47221E3
	220	30 x 30	1.19	1.50	0.59	0.43	37221E3
	220	35 x 25	1.19	1.50	0.67	0.51	27221E3
	270	25 x 50	1.50	1.50	0.47	0.34	47271E3
	270	30 x 35	1.34	1.50	0.50	0.38	37271E3
	270	35 x 30	1.42	1.50	0.49	0.37	27271E3
330	30 x 45	1.64	1.50	0.38	0.28	37331E3	
330	35 x 35	1.58	1.50	0.42	0.32	27331E3	
390	30 x 50	1.85	1.50	0.33	0.25	37391E3	
390	35 x 40	1.78	1.50	0.35	0.26	27391E3	
470	35 x 45	1.97	1.50	0.29	0.22	27471E3	
560	35 x 50	2.20	1.50	0.25	0.19	27561E3	
680	35 x 60	2.60	1.50	0.21	0.16	27681E3	

Note

⁽¹⁾ ESR at 100 Hz is approximately 1.05 x ESR 120 Hz



ADDITIONAL ELECTRICAL DATA		
PARAMETER	CONDITIONS	VALUE
Voltage		
Surge voltage	≥ 200 V versions	$U_s = 1.1 \times U_R$
Reverse voltage	≤ 1 V	-
Current		
Leakage current	After 5 min at U_R	$I_{L5} \leq 0.02 C_R \times U_R$ or 1.5 mA, whichever is smaller
Inductance		
Equivalent series inductance (ESL)	All case sizes	19 nH typical/25 nH max.

Table 3

LOW TEMPERATURE CHARACTERISTIC (at 120 Hz)		
DESCRIPTION	U_R (V) ⁽¹⁾	
	200 TO 450	
Impedance ratio	$Z(-25\text{ °C})/Z(+20\text{ °C})$	4

Note

(1) Impedance ratio shall not exceed the given values

RIPPLE CURRENT AND USEFUL LIFE

I_A = Actual ripple current at 120 Hz
 I_R = Rated ripple current at 120 Hz and 105 °C
 (1) Useful life at 105 °C and I_R applied: 2000 h

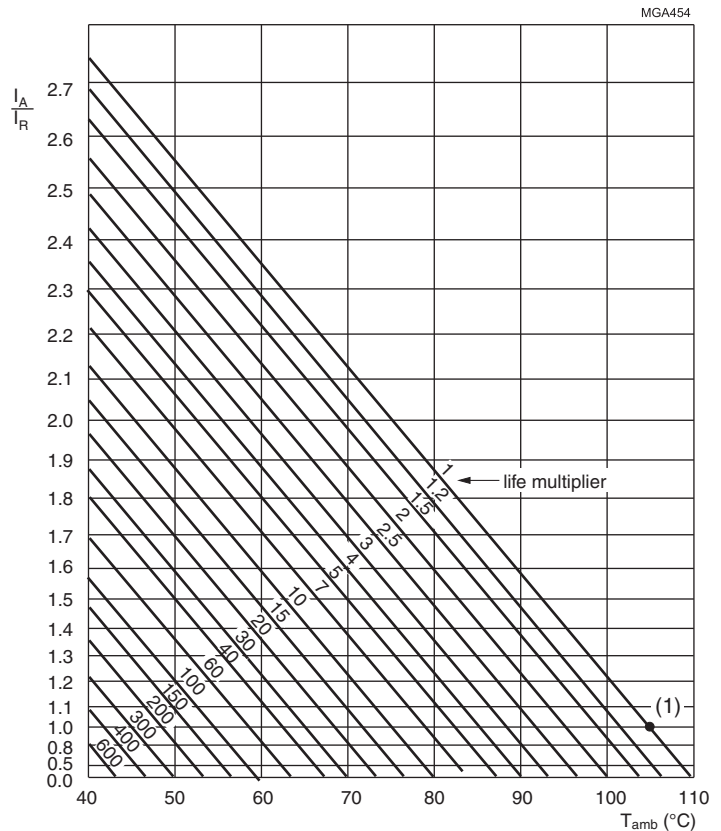


Fig. 4 - Multiplier of useful life as a function of ambient temperature and ripple current load



Table 4

MULTIPLIER OF RIPPLE CURRENT (I_R) AS A FUNCTION OF FREQUENCY	
FREQUENCY (Hz)	I_R MULTIPLIER
60	0.90
100	0.95
120	1.00
500	1.20
1000	1.30
$\geq 10\ 000$	1.40

Table 5

TEST PROCEDURES AND REQUIREMENTS			
TEST		PROCEDURE (quick reference)	REQUIREMENTS
NAME OF TEST	REFERENCE		
Useful life	CECC 30301 subclause 1.8.1	$T_{amb} = 105\ ^\circ\text{C}$; U_R and I_R applied: 2000 h	$\Delta C/C: \pm 30\ \%$ $ESR \leq 3 \times \text{spec. limit}$ $I_{L5} \leq \text{spec. limit}$ no short or open circuit, no visible damage, total failure percentage: $\leq 3\ \%$
Shelf life (storage at high temperature)	IEC 60384-4/ EN130300 subclause 4.17	$T_{amb} = 105\ ^\circ\text{C}$; no voltage applied; 500 h After test: U_R to be applied for 30 min, 24 h to 48 h before measurement	$\Delta C/C: \pm 20\ \%$ $ESR \leq 2 \times \text{spec. limit}$ $I_{L5} \leq 1 \times \text{spec. limit}$



Disclaimer

ALL PRODUCT, PRODUCT SPECIFICATIONS AND DATA ARE SUBJECT TO CHANGE WITHOUT NOTICE TO IMPROVE RELIABILITY, FUNCTION OR DESIGN OR OTHERWISE.

Vishay Intertechnology, Inc., its affiliates, agents, and employees, and all persons acting on its or their behalf (collectively, "Vishay"), disclaim any and all liability for any errors, inaccuracies or incompleteness contained in any datasheet or in any other disclosure relating to any product.

Vishay makes no warranty, representation or guarantee regarding the suitability of the products for any particular purpose or the continuing production of any product. To the maximum extent permitted by applicable law, Vishay disclaims (i) any and all liability arising out of the application or use of any product, (ii) any and all liability, including without limitation special, consequential or incidental damages, and (iii) any and all implied warranties, including warranties of fitness for particular purpose, non-infringement and merchantability.

Statements regarding the suitability of products for certain types of applications are based on Vishay's knowledge of typical requirements that are often placed on Vishay products in generic applications. Such statements are not binding statements about the suitability of products for a particular application. It is the customer's responsibility to validate that a particular product with the properties described in the product specification is suitable for use in a particular application. Parameters provided in datasheets and/or specifications may vary in different applications and performance may vary over time. All operating parameters, including typical parameters, must be validated for each customer application by the customer's technical experts. Product specifications do not expand or otherwise modify Vishay's terms and conditions of purchase, including but not limited to the warranty expressed therein.

Except as expressly indicated in writing, Vishay products are not designed for use in medical, life-saving, or life-sustaining applications or for any other application in which the failure of the Vishay product could result in personal injury or death. Customers using or selling Vishay products not expressly indicated for use in such applications do so at their own risk and agree to fully indemnify and hold Vishay and its distributors harmless from and against any and all claims, liabilities, expenses and damages arising or resulting in connection with such use or sale, including attorneys fees, even if such claim alleges that Vishay or its distributor was negligent regarding the design or manufacture of the part. Please contact authorized Vishay personnel to obtain written terms and conditions regarding products designed for such applications.

No license, express or implied, by estoppel or otherwise, to any intellectual property rights is granted by this document or by any conduct of Vishay. Product names and markings noted herein may be trademarks of their respective owners.

Material Category Policy

Vishay Intertechnology, Inc. hereby certifies that all its products that are identified as RoHS-Compliant fulfill the definitions and restrictions defined under Directive 2011/65/EU of The European Parliament and of the Council of June 8, 2011 on the restriction of the use of certain hazardous substances in electrical and electronic equipment (EEE) - recast, unless otherwise specified as non-compliant.

Please note that some Vishay documentation may still make reference to RoHS Directive 2002/95/EC. We confirm that all the products identified as being compliant to Directive 2002/95/EC conform to Directive 2011/65/EU.