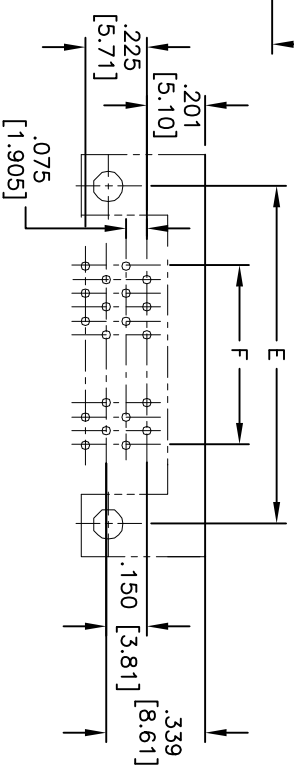
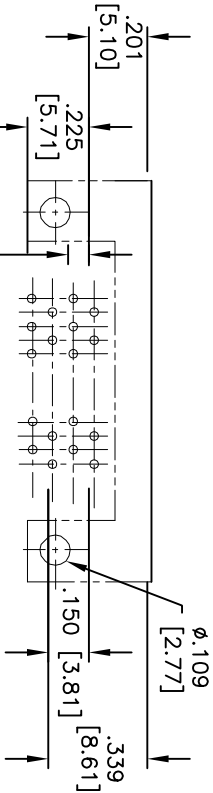
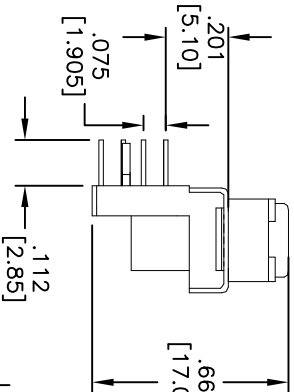
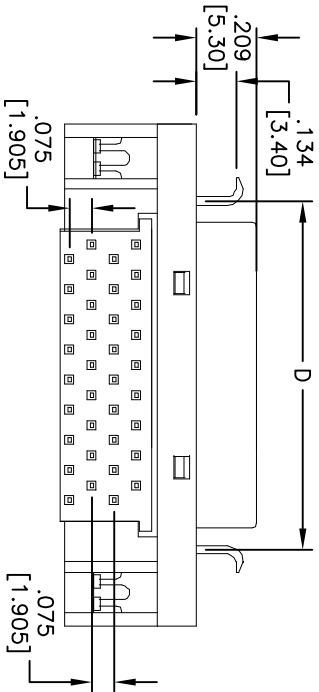
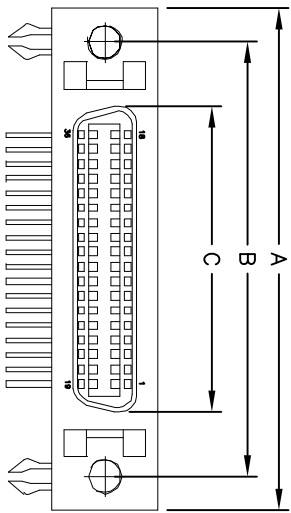


APPROVED: _____
 DATE: _____ TITLE: _____

Rev	AWO #	Description	Date	Appr
-		RELEASED	5/20/05	
A		REVISED DIM.	1/19/10	
B		REDRAWN	11/22/10	

Positions	A	B	C	D	E	F
14	1.164 [29.57]	.931 [23.64]	.497 [12.63]	.672 [17.08]	.931 [23.64]	.300 [7.62]
20	1.315 [33.40]	1.079 [27.40]	.647 [16.44]	.820 [20.83]	1.081 [27.45]	.450 [11.43]
26	1.464 [37.19]	1.231 [31.26]	.797 [20.25]	.970 [24.64]	1.231 [31.26]	.600 [15.24]
36	1.714 [43.54]	1.480 [37.61]	1.047 [26.60]	1.222 [31.05]	1.481 [37.61]	.850 [21.59]
50	2.067 [52.50]	1.831 [46.50]	1.397 [35.49]	1.570 [39.88]	1.831 [46.50]	1.200 [30.48]
68	2.520 [64.00]	2.280 [57.92]	1.847 [46.92]	2.020 [51.32]	2.288 [57.60]	1.650 [41.91]
100	3.314 [84.18]	3.080 [78.23]	2.642 [67.10]		3.075 [78.10]	2.450 [62.23]



14, 26, 50 POSITION
PCB LAYOUT

SPECIFICATIONS:

Material:
 Insulator: PBT, glass reinforced, rated UL 94V-0
 Insulator color: Black
 Contacts: Phosphor Bronze
 Shell: Steel, Nickel plated
 Plating:
 Gold flash over Nickel underplate on mating area,
 Tin over Copper underplate on tails

Electrical:
 Operating voltage: 500 VAC max
 Current rating: 1 Amp max
 Contact resistance: 35 mohms max
 Insulation resistance: 500 Mohms min
 Dielectric withstanding voltage: 500 VAC for 1 minute

Temperature Rating:
 Operating temperature: -55°C to +105°C

Environmental:
 Lead free, RoHS compliant
 Recommended soldering temp: 235°C for 5 seconds



UNLESS OTHERWISE SPECIFIED ALL DIMENSIONS ARE IN INCHES [MM]	
TOLERANCES: EXCEPT AS NOTED	
INCHES	MM
.X ± .10	ØX ± .10
.XX ± .020	ØXX ± .015
.XXX ± .015	ØXXX ± .010
APPROVALS	DATE
DRAWN	SS
CHECKED	5/20/05
APPROVED	

ADAM TECH
 909 Railway Avenue, Union, NJ 07083
 Phone: 908-687-5000 Fax: 908-687-5710

TITLE: RIBBON CONNECTOR SOCKET, R/A
 LATCH BLOCKS, BOARDLOCKS, M.2.6 HOLES

SIZE: X PART NO.: S2B-SR-XX-3-BL-3
 REF: S00087T SCALE: NTS SHEET 1 OF 1