



**Data Sheet**

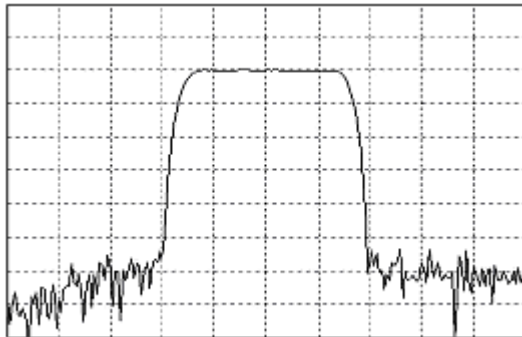


Product Category: IF SAW Filter

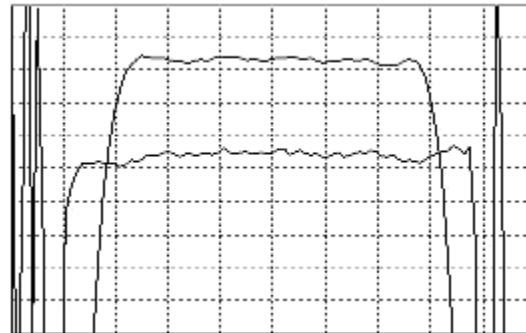
Part Number: 820-IF140.0M-D      Package: 20.2 x 12.6 Thru Hole      Application: Base Station & Repeater      Last Modified: May 30 2003

TYPE :  
140.0 MHz Bandpass Filter  
7.3 MHz Bandwidth

PART NUMBER :  
**820-IF140.0M-D**



Horizontal : 2.5 MHz/Div  
Vertical : 10 dB/Div



Horizontal : 1.2 MHz/Div  
Vertical : 1 dB/Div  
Vertical : 100 ns/Div

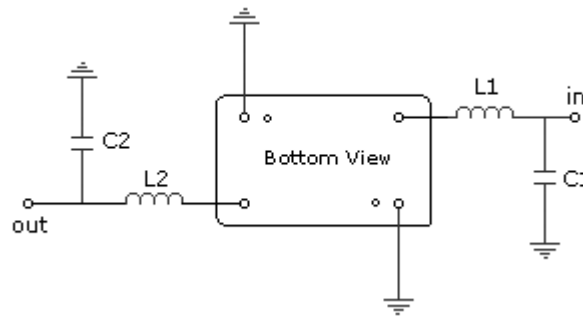
**OPERATING CONDITIONS / ELECTRICAL CHARACTERISTICS**

PARAMETERS	Minimum	Typical	Maximum	Units
Center Frequency	139.9	140.0	140.1	MHz
Insertion Loss	-	22.5	25.0	dB
1dB Bandwidth	6.8	7.1	-	MHz
3dB Bandwidth	7.3	7.6	-	MHz
40dB Bandwidth	-	9.5	10.0	MHz
Passband Ripple	-	0.4	0.8	dB
Group Delay Variation	-	50	70	nsec
Absolute Delay	-	2.84	-	µsec
Ultimate Rejection	50	55	-	dB
Substrate Material	-	112LT	-	-
Ambient Temperature	-	25	-	°C
Phase Linearity	-	3.8	7.0	degc

\* Custom SAW IF Filters available. Contact Oscilent for assistance.

**PACKAGE OUTLINE (mm)**

**TEST FIXTURE**



L1 = 39nH      C1 = 43pF  
 L2 = 39nH      C2 = 43pF  
 Source/Load Impedance = 50 ohms

**Oscilent Corporation** - CALL **949.252.0522**

17962 Sky Park Circle, Building D, Irvine, CA 92614, USA  
 Fax: 949.252.0599, E-Mail: Sales@Oscilent.com

**Part No.:** 820-IF140.0M-D