

| ATLANTIC VERSION TERMINATOR INTERFACE ADAPTER | PART NUMBER | REVISION | DESCRIPTION | FEED TYPE | CONVERT TO | PART NUMBERS REQUIRED | | | | | |
|---|-------------|--------------------------|--------------------------------|--------------------------------|-------------------|-----------------------|-----------|-------------|-----------|-----------|------------------------|
| | 2150378-1 | B | FINE CRIMP HEIGHT ADJUST | MECHANICAL | PNEUMATIC FEED | 2119950-1 | 2119792-1 | - | 2119641-1 | - | 2063440-2 |
| | 2150378-2 | B | FINE CRIMP HEIGHT ADJUST | PNEUMATIC | SERVO LATCH PLATE | 2119951-1 | 1901697-1 | 8-2150378-5 | - | - | 2168400-7 (QUANTITY 2) |
| | | | | | SMART APPLICATOR | 2161326-1 | - | 8-2150378-4 | - | - | - |
| | | | | | MECHANICAL FEED | 2119949-1 | 2063961-1 | 5-18022-5 | 2119653-1 | - | - |
| | 2150378-5 | B | FINE CRIMP HEIGHT ADJUST | SERVO LATCH PLATE ⁴ | SERVO LATCH PLATE | 2119951-1 | 1901697-1 | 8-2150378-5 | - | - | 2168400-7 (QUANTITY 2) |
| | | | | | SMART APPLICATOR | 2161326-1 | - | 8-2150378-4 | - | - | - |
| | | | | | MECHANICAL FEED | 2119949-1 | 2063961-1 | 5-18022-5 | 2119653-1 | - | - |
| 2150378-6 | B | NON-CRIMP HEIGHT ADJUST | SERVO LATCH PLATE ⁴ | PNEUMATIC FEED | 2119950-1 | 2119792-1 | - | 2119641-1 | - | 2063440-2 | |
| | | | | - | - | - | - | - | - | - | |
| 2150378-7 | B | FINE CRIMP HEIGHT ADJUST | NONE | - | - | - | - | - | - | - | |
| 7-2150378-7 | B | CRIMP TOOLING KIT | - | - | - | - | - | - | - | - | |

| APPLICATOR DATA | | |
|-----------------------------|----------------|------|
| CRIMP | SIZE | TYPE |
| WIRE | 2.79 mm [.110] | F |
| INSUL | 4.32 mm [.170] | F |
| APPL INSTRUCTIONS 408-10390 | | |

| TERMINAL DATA: TE TERMINAL | | TE CRIMP SPECIFICATION | |
|---|-------------|------------------------------|-------------|
| TERMINAL NAME: .250 SERIES AUTOMOTIVE POS LOCK RECEPTOR | | | |
| WIRE STRIP LENGTH | | INSULATION DIAMETER RANGE | |
| 4.20-5.20 mm [.165-.205 IN] | | Ø2.20-3.40 mm [.087-.134 IN] | |
| TERMINAL APPLICATION SPECIFICATION | 114-5060 | | |
| TERMINALS APPLIED | | | |
| TE TERMINAL | TE TERMINAL | TE TERMINAL | TE TERMINAL |
| 170454-1 | 170454-2 | 85069-2 | |

| WIRE SIZE | CRIMP HEIGHT mm [INCH] | CRIMP HEIGHT REFERENCE SETTING |
|-------------------|----------------------------|--------------------------------|
| 14 AWG OR 2.00mm2 | 1.86+/-0.05 [.073+/-0.002] | 4.5 |
| 16 AWG OR 1.25mm2 | 1.62+/-0.05 [.064+/-0.002] | 6.9 |
| 18 AWG OR 0.85mm2 | 1.50+/-0.05 [.059+/-0.002] | 8.2 |

- 1 RECOMMENDED SPARE PARTS
- 2 GREASE BEARING SURFACES LIGHTLY
- 3 LUBRICATE DAILY PER THE APPLICATOR INSTRUCTION SHEET SUPPLIED WITH THE APPLICATOR.
- 4 APPLICATOR SPECIFIC DATA TO BE ENTERED INTO BLANK MEMORY CHIP AT ASSEMBLY. SEE BELOW FOR PART NUMBER:
 MECHANICAL FEED WITH "SMART APPLICATOR" CONVERSION: 8-2150378-4
 PNEUMATIC FEED WITH "SMART APPLICATOR" CONVERSION: 8-2150378-4
 SERVO FEED WITH "FINE CRIMP HEIGHT ADJUST": 8-2150378-5
 SERVO FEED WITH "NON-CRIMP HEIGHT ADJUST": 8-2150378-6
- 5 ADJUSTMENT OF THE STRIPPER MAY BE REQUIRED WHEN MOVING THE APPLICATOR BETWEEN BENCH AND LEADMAKER APPLICATIONS.
- 6 APPLY PART NUMBER 1-23419-5 LOCTITE TO THREADS OF ITEMS 62. APPLY PART NUMBER 2-23419-6 LOCTITE TO THREADS OF ITEM 242. FOR -6 ONLY APPLY PART NUMBER 1-23419-5 LOCTITE TO THREADS OF ITEMS 37.
- 7 GREASE THREADS, GROOVE AND O-RING ON ITEMS 35 & 252.
- 8 MAGNET, ITEM 166 MUST BE ORIENTED CORRECTLY IN ORDER TO PROPERLY ACTUATE THE COUNTER.
- 9 CRIMP HEIGHT REFERENCE SETTING WAS THE SETTING USED WHEN THE APPLICATOR WAS QUALIFIED AT THE FACTORY. ADJUSTMENT MAY BE NECESSARY WHEN RUNNING APPLICATOR IN THE FIELD.
- 10 SPARE FEED CAM STORAGE LOCATION REFER TO INSTRUCTION SHEET FOR ADDITIONAL INFORMATION.
- 11 THE RECOMMENDED SET-UP FOR END FEED APPLICATORS IS POST-FEED WITH ITEM 2119653-1. THE APPLICATOR CAN BE CONFIGURED FOR PRE-FEED WITH ITEM 2119652-1 BUT MAY ENCOUNTER PROBLEMS WITH SOME APPLICATIONS. FEED ISSUES OR TERMINAL JAMMING MAY OCCUR IN THE PRE-FEED CONFIGURATION.
- 12 WHEN ASSEMBLING -6 NON-CRIMP HEIGHT ADJUST APPLICATOR USE SHIM PACK 2119957-2 TO ALIGN APPLICATOR'S MAXIMUM WIRE CRIMP HEIGHT AT NORMAL TERMINATOR SHUT HEIGHT

***WARNING**
 ON INSTALLATION, SET WIRE DISC, ITEM 40 TO LARGEST WIRE SIZE SETTING. USE OF SETTINGS BELOW MINIMUM REQUIRED CRIMP HEIGHT SETTING WILL CAUSE DAMAGE TO CRIMP TOOLING.

| -77 | -7 | -6 | -5 | -2 | -1 | PART NO | DESCRIPTION | ITEM NO |
|-----|----|----|----|----|----|-----------|----------------------|---------|
| - | - | 1 | - | - | - | 2119957-2 | APPLICATOR SHIM PACK | 260 |

ATLANTIC VERSION
 Shown on sheets 1 of 4 & 2 of 4
 (Pacific version shown on sheets 3 of 4 & 4 of 4)

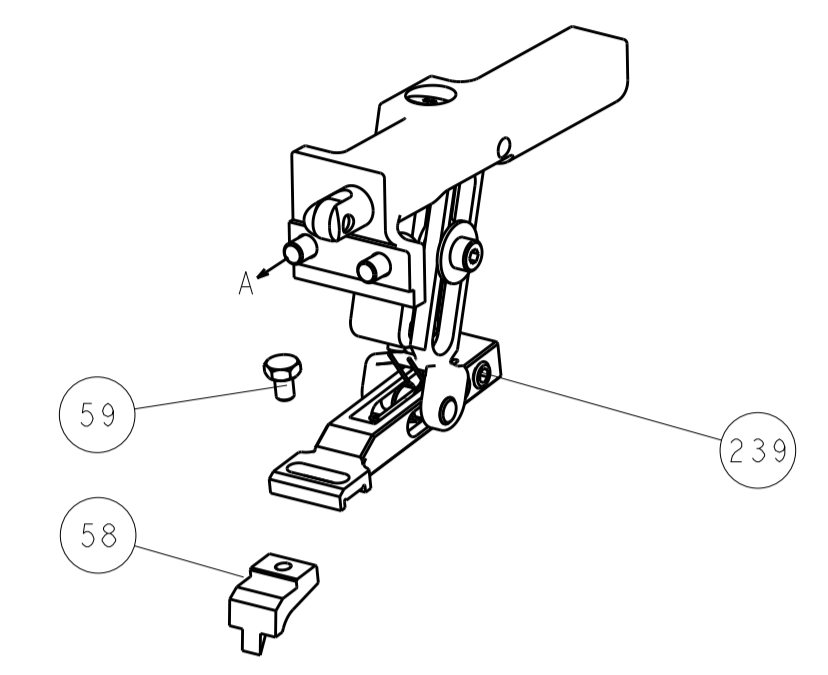
| SET UP GAUGE | LOC | DIST | REVISIONS | | | |
|--------------|-----|------|-----------|-----------|----|------|
| 2119599-2 | A | 66 | REV | DATE | BY | CHKD |
| | | | 1 | 03OCT2013 | GH | TE |
| | | | A | 19NOV2013 | GH | TE |
| | | | A1 | 21OCT2016 | KH | JDG |
| | | | B | 02DEC2016 | YY | CT |

| REV | DATE | BY | CHKD | DESCRIPTION | ITEM NO | | | |
|-----|--------------------|--------|------|-------------|---------|-------------|--------------------------------------|-----|
| - | 1 | - | 1 | 1 | 1 | 8-21084-0 | O-RING, .676 ID, .070 DIA. MAT. | 252 |
| - | - | - | - | 1 | - | 2119640-1 | PUSH ROD, AIR FEED | 250 |
| - | - | - | - | 1 | - | 2079988-1 | BUSHING, LCH5-12, MISUMI | 249 |
| - | - | - | - | 1 | - | 2119641-1 | FEED CAM, AIR FEED | 248 |
| - | 1 | - | 1 | 1 | 1 | 2119798-1 | DETENT PIN | 247 |
| - | 1 | - | 1 | 1 | 1 | 1-22279-3 | SPRING, COMPRESSION | 246 |
| - | - | 1 | - | - | - | 2119759-1 | RAM, AMP STYLE, END FEED, NON-ADJUST | 245 |
| - | 1 | 1 | 1 | 1 | 1 | 2119082-9 | CAM, SNAIL, INSULATION ADJUSTMENT | 244 |
| - | 1 | 1 | 1 | 1 | 1 | 2079764-1 | WASHER, WAVE SPRING, CREST-TO-CREST | 243 |
| - | 1 | 1 | 1 | 1 | 1 | 2119083-1 | RETAINER, INSULATION DIAL | 242 |
| - | - | 2 | 2 | - | - | 2168400-7 | SHCS, LOW HEAD, RoHS, M5 X 10 | 240 |
| - | - | - | - | - | 1 | 2119580-1 | MECHANICAL FEED ASSEMBLY | 239 |
| - | - | - | - | 1 | - | 2063440-2 | AIR FEED MODULE | 238 |
| - | - | 1 | 1 | - | - | 2119740-2 | TAG, IDENTIFICATION | 213 |
| - | - | REFREF | - | - | - | 1901697-1 | FEED FINGER ASSEMBLY, EF | 183 |
| - | - | - | - | 2 | - | 21045-3 | RING, RETAIN, EXTERN, 3/16 CRESCENT | 172 |
| - | 1 | 1 | 1 | 1 | 1 | 994969-1 | MAGNET, RARE EARTH HIGH ENERGY | 166 |
| - | REFREFREFREFREFREF | - | - | - | - | 994970-2 | COUNTER, MAGNETIC | 164 |
| - | - | - | - | 1 | - | 240638-1 | SPRING, FEED FINGER | 163 |
| - | - | - | - | 1 | - | 3-23627-7 | PIN, RETAIN, GRVD, 3/16 X .854 | 137 |
| - | - | REFREF | - | - | - | SEE NOTE 4 | MEMORY CHIP, PROGRAMMED | 135 |
| - | - | 1 | 1 | - | - | 1633743-1 | SERVO FEED LATCH ASM | 133 |
| - | 1 | 1 | 1 | 1 | 1 | 455888-4 | SPACER, CRIMPER | 82 |
| - | 1 | 1 | 1 | 1 | 1 | 2119956-2 | DOCUMENTATION PACKAGE | 71 |
| - | 2 | 2 | 2 | 2 | 2 | 2-18032-2 | SCR, SET, FLT POINT M3 X 10.0 | 70 |
| - | 1 | - | - | 1 | 1 | 2119740-1 | TAG, IDENTIFICATION | 67 |
| - | 2 | 2 | 2 | 2 | 2 | 2168078-1 | SCREW, DRIVE, RH, RoHS, 2 x .188 | 66 |
| - | 2 | 2 | 2 | 2 | 2 | 2168400-5 | SHCS, LOW HEAD, RoHS, M4 X 20 | 64 |
| - | 1 | - | 1 | 1 | 1 | 2119793-1 | LIMITER, ADJUSTMENT BOLT | 63 |
| - | 3 | - | 3 | 3 | 3 | 992763-5 | SCR, SET, SOC, CONE POINT, M3 x 4.0 | 62 |
| - | 1 | 1 | 1 | 1 | 1 | 2079383-4 | SCR, BHSC, RoHS (M4 X 8) | 60 |
| - | - | - | - | - | 1 | 5-18022-5 | SCR, HEX HD CAP, M4 X 6.0 | 59 |
| - | - | - | - | - | 1 | 2063961-1 | FEED FINGER | 58 |
| - | 3 | 3 | 3 | 3 | 3 | 2168400-4 | SHCS, LOW HEAD, RoHS, M4 X 8 | 57 |
| - | 2 | 2 | 2 | 2 | 2 | 2168083-9 | SCR, SKT HD CAP, RoHS, M4 X 20 | 56 |
| - | 2 | 2 | 2 | 2 | 2 | 5018030-2 | NUT, HEX, REG, RoHS, M4 | 55 |
| - | 2 | 2 | 2 | 2 | 2 | 5018030-1 | NUT, HEX, REG, RoHS, M3 | 54 |
| - | 2 | 2 | 2 | 2 | 2 | 986965-8 | NUT, LOCK, HEX, TORQUE (M4) | 53 |
| - | - | - | - | 1 | - | 2119792-1 | PAWL, EF, AIR | 51 |
| - | - | - | - | 1 | 2 | 18023-9 | SCR, SKT HD CAP M4 X 6.0 | 49 |
| - | - | - | - | - | 1 | 2119652-1 | FEED CAM, PRE FEED | 48 |
| - | - | - | - | - | 1 | 2119653-1 | FEED CAM, POST FEED | 47 |
| - | 1 | 1 | 1 | 1 | 1 | 2119655-5 | APPLICATOR BASIC ASSEMBLY, EF | 46 |
| - | 1 | - | 1 | 1 | 1 | 2119369-1 | RAM, AMP STYLE, END FEED | 44 |
| - | 1 | 1 | 1 | 1 | 1 | 2079383-7 | SCR, BHSC, RoHS (M8 X 25) | 41 |
| - | 1 | - | 1 | 1 | 1 | 2119645-1 | DISC, NUMBERED FA WIRE ADJUSTMENT | 40 |
| - | 1 | - | 1 | 1 | 1 | 2119957-1 | APPLICATOR SHIM PACK | 39 |
| - | 1 | 1 | 1 | 1 | 1 | 1-2119644-2 | RAM WASHER, PRECISION | 38 |
| - | 1 | 1 | 1 | 1 | 1 | 2119085-1 | FA HEAD, ATLANTIC STYLE | 37 |
| - | 1 | - | 1 | 1 | 1 | 2119092-1 | BOLT, ADJUSTMENT | 35 |
| - | 7 | 7 | 7 | 7 | 7 | 1-18028-2 | WASHER, FLAT, REG M4 | 33 |
| - | 2 | 2 | 2 | 2 | 2 | 2168083-9 | SCR, SKT HD CAP, RoHS, M4 X 20 | 31 |
| - | 2 | 2 | 2 | 2 | 2 | 1-2168083-0 | SCR, SKT HD CAP, RoHS, M4 X 10 | 29 |
| - | 1 | 1 | 1 | 1 | 1 | 240639-1 | STRIPPER (MACHINING) | 27 |
| - | 2 | 2 | 2 | 2 | 2 | 1320906-1 | STUD, THREADED | 25 |
| - | 1 | 1 | 1 | 1 | 1 | 1752371-5 | PLATE, STRIP GUIDE | 24 |
| - | 1 | 1 | 1 | 1 | 1 | 240825-1 | PLATE, STRIP HOLD DOWN | 23 |
| - | 2 | 2 | 2 | 2 | 2 | 2-22281-3 | SPRING, COMPRESSION | 22 |
| - | 1 | 1 | 1 | 1 | 1 | 1752373-4 | DRAG | 20 |
| - | 2 | 2 | 2 | 2 | 2 | 1901259-5 | GUIDE, LOWER STRIP | 18 |
| - | 4 | 4 | 4 | 4 | 4 | 1-2079383-1 | SCR, BHSC, RoHS (M6 X 12) | 17 |
| - | 1 | 1 | 1 | 1 | 1 | 4-240641-5 | SPACER | 16 |
| - | 1 | 1 | 1 | 1 | 1 | 240644-1 | PLATE, REAR SHEAR | 11 |
| - | - | - | - | - | - | - | - | 10 |
| - | 1 | 1 | 1 | 1 | 1 | 690482-5 | PLATE, FRONT SHEAR | 9 |
| - | 1 | 1 | 1 | 1 | 1 | 1-1333219-4 | ANVIL, COMBINATION | 8 |
| - | 1 | 1 | 1 | 1 | 1 | 2217206-7 | BLADE, SLUG | 7 |
| - | - | - | - | - | - | - | - | 6 |
| - | 1 | 1 | 1 | 1 | 1 | 240641-6 | SPACER | 5 |
| - | 1 | 1 | 1 | 1 | 1 | 1-238009-4 | BLOCK, FL CRIMPER SPACER | 4 |
| - | 1 | 1 | 1 | 1 | 1 | 4-2119582-9 | CRIMPER, INSULATION F PREMIUM | 3 |
| - | 1 | 1 | 1 | 1 | 1 | 455888-9 | SPACER, CRIMPER | 2 |
| - | 1 | 1 | 1 | 1 | 1 | 456408-2 | CRIMPER, WIRE PREMIUM | 1 |

| DIMENSIONS: | | TOLERANCES UNLESS OTHERWISE SPECIFIED: | | MATERIAL: | | FINISH: | | WEIGHT: | | SCALE: | |
|-------------|---------|--|---------|-----------|---------|---------|--------|---------|-------|--------|-----|
| mm | 0 PLC ± | 1 PLC ± | 2 PLC ± | 3 PLC ± | 4 PLC ± | ANGLES | FINISH | WT | SCALE | SHEET | REV |
| | | | | | | | | | 1:1 | 1 OF 4 | B |

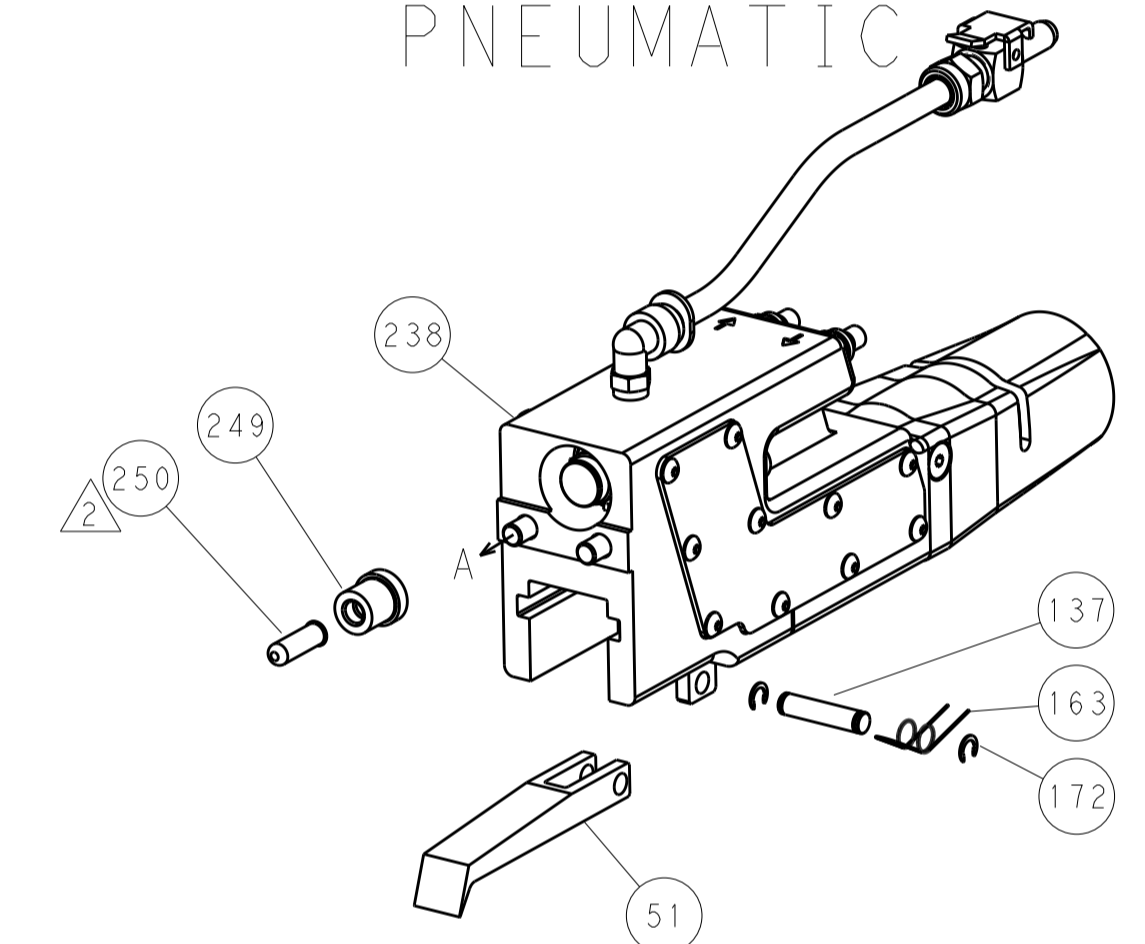
| LOC | DIST | REV | DATE | BY | APPV |
|-----------|------|-----|-------------|------|------|
| A | 66 | | | | |
| REVISIONS | | | DESCRIPTION | DATE | BY |
| | | | SEE SHEET 1 | | |

FEED TYPE MECHANICAL

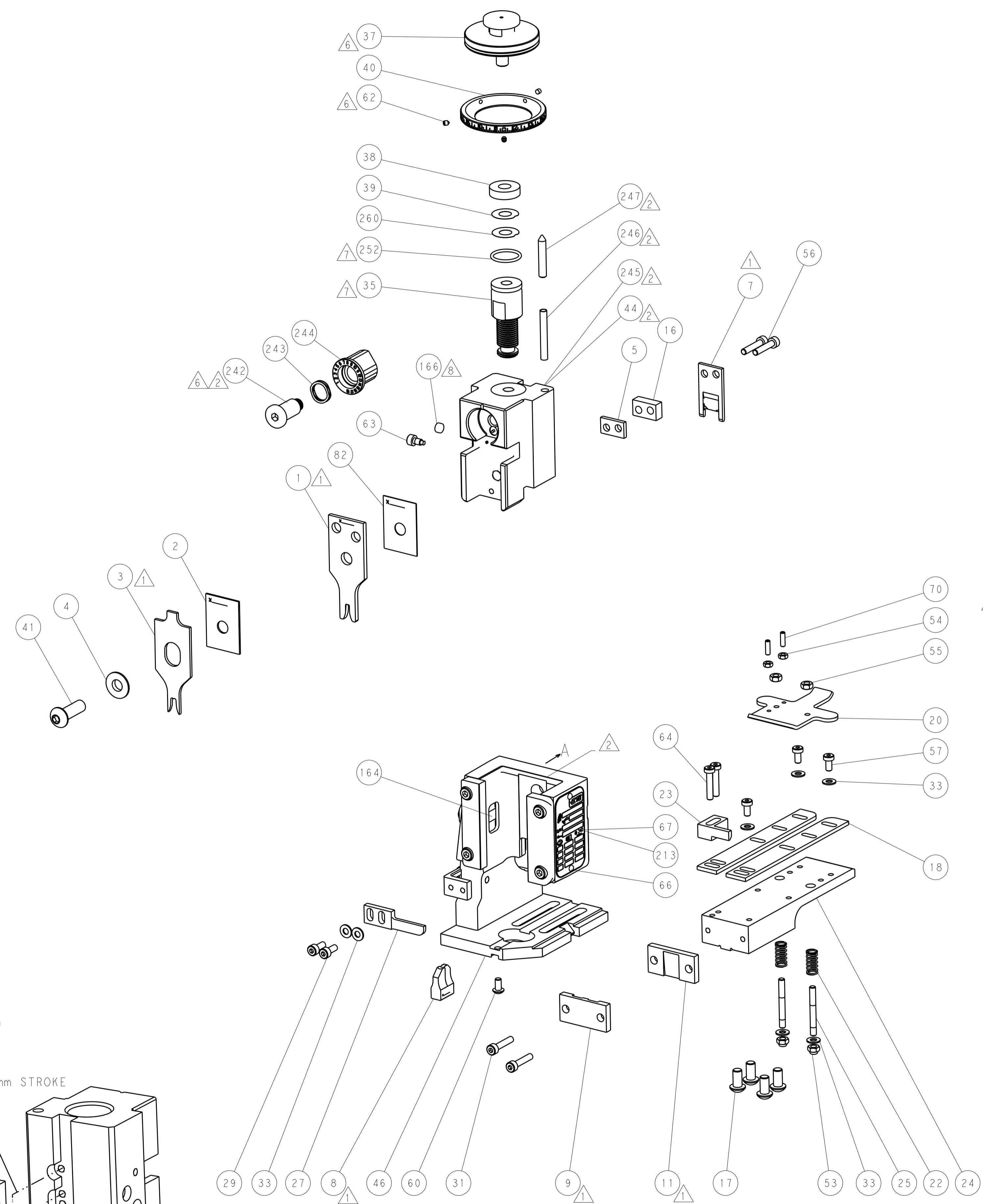
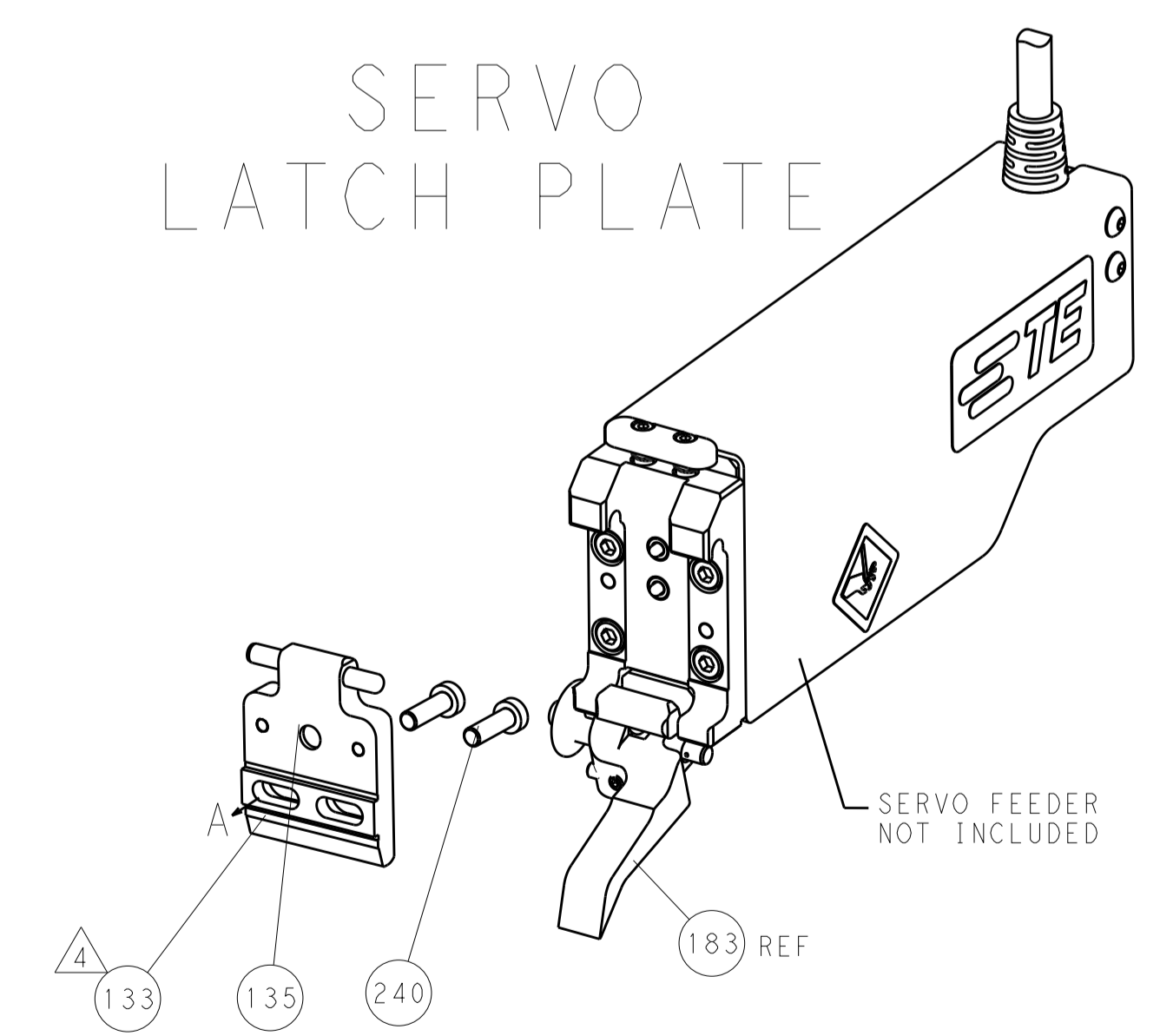


SCALE 3:5

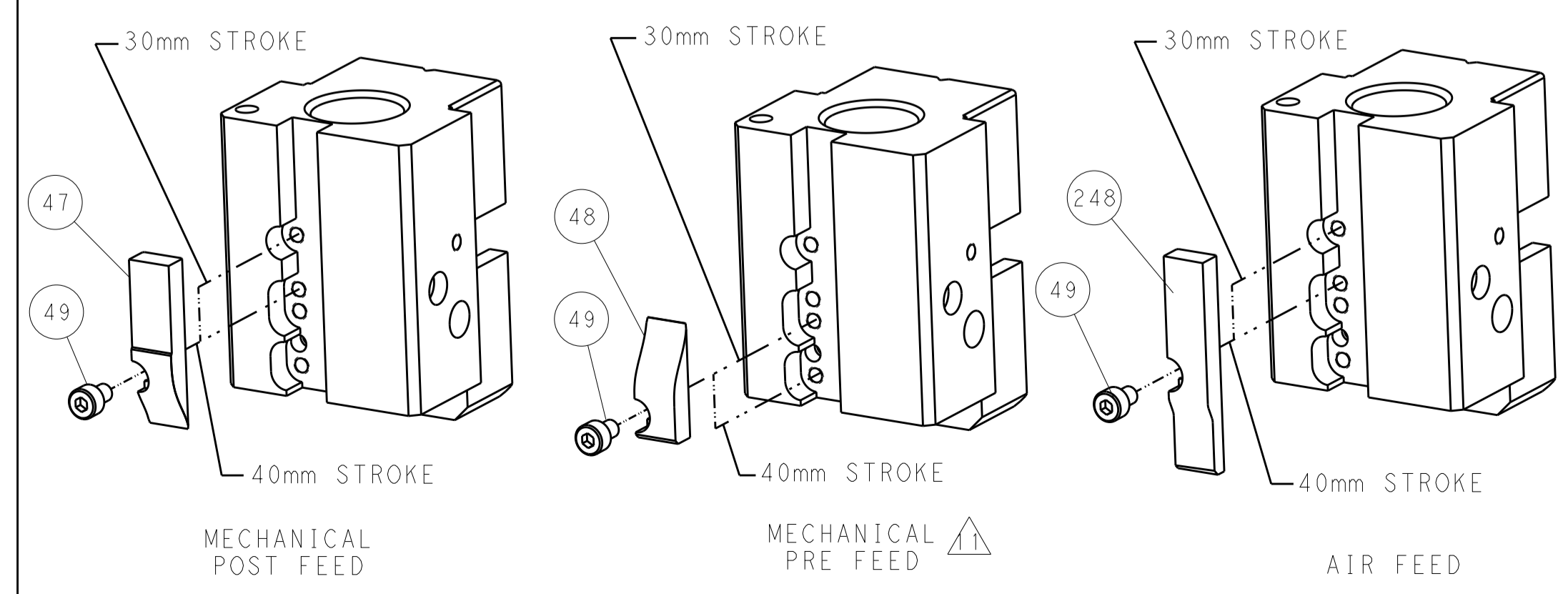
PNEUMATIC



SERVO LATCH PLATE



CAM POSITIONS



ATLANTIC VERSION
 Shown on sheets 1 of 4 & 2 of 4
 (Pacific version shown on sheets 3 of 4 & 4 of 4)

| | | | | | | | |
|-------------|--------|--|--|------------------------|--|--------------------|---------------------------|
| DIMENSIONS: | | TOLERANCES UNLESS OTHERWISE SPECIFIED: | | DWN: HOFFNER 03OCT2013 | | TE Connectivity | |
| mm | 0 PLC | ± | | CHK: TELBIN 03OCT2013 | NAME | | Harrisburg, PA 17105-3608 |
| | 1 PLC | ± | | APPV: TELBIN 03OCT2013 | PRODUCT SPEC | | |
| | 2 PLC | ± | | | APPLICATION SPEC | | |
| | 3 PLC | ± | | | SIZE | | CAGE CODE DRAWING NO |
| | 4 PLC | ± | | | MATERIAL | | RESTRICTED TO |
| | ANGLES | ± | | | WEIGHT | | |
| | FINISH | | | | Customer Accessible Production Drawing | | |
| | | | | SCALE | | SHEET 2 OF 4 REV B | |

| PACIFIC VERSION TERMINATOR INTERFACE ADAPTER | PART NUMBER | REVISION | DESCRIPTION | FEED TYPE | APPLICATOR STYLE CONVERSION CHART | | | | | | |
|--|-------------|----------|--------------------------|--------------------------------|-----------------------------------|-----------------------|-----------|-------------|-----------|---|------------------------|
| | | | | | CONVERT TO | PART NUMBERS REQUIRED | | | | | |
| | 2-2150378-1 | B | FINE CRIMP HEIGHT ADJUST | MECHANICAL | PNEUMATIC FEED | 2119950-1 | 2119792-1 | - | 2119641-2 | - | 2063440-2 |
| | | | | | SERVO LATCH PLATE | 2119951-1 | 1901697-1 | 8-2150378-5 | - | - | 2168400-7 (QUANTITY 2) |
| | | | | | SMART APPLICATOR | 2161326-1 | - | 8-2150378-4 | - | - | - |
| | 2-2150378-2 | B | FINE CRIMP HEIGHT ADJUST | PNEUMATIC | MECHANICAL FEED | 2119949-1 | 2063961-1 | 5-18022-5 | 2119653-2 | - | - |
| | | | | | SERVO LATCH PLATE | 2119951-1 | 1901697-1 | 8-2150378-5 | - | - | 2168400-7 (QUANTITY 2) |
| | | | | | SMART APPLICATOR | 2161326-1 | - | 8-2150378-4 | - | - | - |
| | 2-2150378-5 | B | FINE CRIMP HEIGHT ADJUST | SERVO LATCH PLATE ⁴ | MECHANICAL FEED | 2119949-1 | 2063961-1 | 5-18022-5 | 2119653-2 | - | - |
| | | | | | PNEUMATIC FEED | 2119950-1 | 2119792-1 | - | 2119641-2 | - | 2063440-2 |
| | 2-2150378-7 | B | FINE CRIMP HEIGHT ADJUST | NONE | - | - | - | - | - | - | - |
| | 7-2150378-7 | B | CRIMP TOOLING KIT | - | - | - | - | - | - | - | - |

| APPLICATOR DATA | | |
|--------------------------------|----------------|------|
| CRIMP | SIZE | TYPE |
| WIRE | 2.79 mm [.110] | F |
| INSUL | 4.32 mm [.170] | F |
| APPL INSTRUCTIONS 408-10390 | | |

| TERMINAL DATA: TE TERMINAL | | TE CRIMP SPECIFICATION |
|---|-------------|---|
| TERMINAL NAME: .250 SERIES AUTOMOTIVE POS LOCK RECEPTOR | | |
| WIRE STRIP LENGTH 4.20-5.20 mm [.165-.205 IN] | | INSULATION DIAMETER RANGE Ø2.20-3.40 mm [.087-.134 IN] |
| TERMINAL APPLICATION SPECIFICATION | 114-5060 | - |
| TERMINALS APPLIED | | |
| TE TERMINAL | TE TERMINAL | TE TERMINAL |
| 170454-1 | 170454-2 | 85069-2 |

| WIRE SIZE | CRIMP HEIGHT mm [INCH] | CRIMP HEIGHT REFERENCE SETTING |
|-------------------------------|----------------------------|--------------------------------|
| 14 AWG OR 2.00mm ² | 1.86+/-0.05 [.073+/-0.002] | 4.5 |
| 16 AWG OR 1.25mm ² | 1.62+/-0.05 [.064+/-0.002] | 6.9 |
| 18 AWG OR 0.85mm ² | 1.50+/-0.05 [.059+/-0.002] | 8.2 |

- RECOMMENDED SPARE PARTS
- GREASE BEARING SURFACES LIGHTLY
- 3. LUBRICATE DAILY PER THE APPLICATOR INSTRUCTION SHEET SUPPLIED WITH THE APPLICATOR.
- APPLICATOR SPECIFIC DATA TO BE ENTERED INTO BLANK MEMORY CHIP AT ASSEMBLY. SEE BELOW FOR PART NUMBER:
 MECHANICAL FEED WITH "SMART APPLICATOR" CONVERSION: 8-2150378-4
 PNEUMATIC FEED WITH "SMART APPLICATOR" CONVERSION: 8-2150378-4
 SERVO FEED WITH "FINE CRIMP HEIGHT ADJUST": 8-2150378-5
- 5. ADJUSTMENT OF THE STRIPPER MAY BE REQUIRED WHEN MOVING THE APPLICATOR BETWEEN BENCH AND LEADMAKER APPLICATIONS.
- APPLY PART NUMBER 1-23419-5 LOCTITE TO THREADS OF ITEMS 62. APPLY PART NUMBER 2-23419-6 LOCTITE TO THREADS OF ITEM 242.
- GREASE THREADS, GROOVE AND O-RING ON ITEMS 139 & 153.
- MAGNET, ITEM 166 MUST BE ORIENTED CORRECTLY IN ORDER TO PROPERLY ACTUATE THE COUNTER.
- CRIMP HEIGHT REFERENCE SETTING WAS THE SETTING USED WHEN THE APPLICATOR WAS QUALIFIED AT THE FACTORY. ADJUSTMENT MAY BE NECESSARY WHEN RUNNING APPLICATOR IN THE FIELD.
- SPARE FEED CAM STORAGE LOCATION REFER TO INSTRUCTION SHEET FOR ADDITIONAL INFORMATION.
- THE RECOMMENDED SET-UP FOR END FEED APPLICATORS IS POST-FEED WITH ITEM 2119653-1. THE APPLICATOR CAN BE CONFIGURED FOR PRE-FEED WITH ITEM 2119652-1 BUT MAY ENCOUNTER PROBLEMS WITH SOME APPLICATIONS. FEED ISSUES OR TERMINAL JAMMING MAY OCCUR IN THE PRE-FEED CONFIGURATION.

***WARNING**
 ON INSTALLATION, SET WIRE DISC, ITEM 40 TO LARGEST WIRE SIZE SETTING. USE OF SETTINGS BELOW MINIMUM REQUIRED CRIMP HEIGHT SETTING WILL CAUSE DAMAGE TO CRIMP TOOLING.

PACIFIC VERSION
 Shown on sheets 3 of 4 & 4 of 4
 (Atlantic version shown on sheets 1 of 4 & 2 of 4)

| SET UP GAUGE | LOC | DIST | REVISIONS | | | |
|--------------|-----|------|-----------|-------------|----|------|
| 2119599-2 | A | 66 | REV | DATE | BY | APPV |
| | | | - | SEE SHEET 1 | - | - |

| | | | | | | | |
|---|-----|-----|-----|-----|-------------|-------------------------------------|-----|
| - | 1 | 1 | 1 | 1 | 2119782-1 | FINE ADJUST HEAD ASM, PACIFIC STYLE | 251 |
| - | - | - | 1 | - | 2119640-1 | PUSH ROD, AIR FEED | 250 |
| - | - | - | 1 | - | 2079988-1 | BUSHING, LCH5-12, MISUMI | 249 |
| - | 1 | 1 | 1 | 1 | 1-22279-3 | SPRING, COMPRESSION | 246 |
| - | 1 | 1 | 1 | 1 | 2119082-9 | CAM, SNAIL, INSULATION ADJUSTMENT | 244 |
| - | 1 | 1 | 1 | 1 | 2079764-1 | WASHER, WAVE SPRING, CREST-TO-CREST | 243 |
| - | 1 | 1 | 1 | 1 | 2119083-1 | RETAINER, INSULATION DIAL | 242 |
| - | - | 2 | - | - | 2168400-7 | SHCS, LOW HEAD, RoHS, M5 X 10 | 240 |
| - | - | - | - | 1 | 2119580-1 | MECHANICAL FEED ASSEMBLY | 239 |
| - | - | - | 1 | - | 2063440-2 | AIR FEED MODULE | 238 |
| - | - | 1 | - | - | 2119740-2 | TAG, IDENTIFICATION | 213 |
| - | 4 | 4 | 4 | 4 | 2079383-9 | SCR, BHSC, RoHS (M6 X 20) | 186 |
| - | - | REF | - | - | 1901697-1 | FEED FINGER ASSEMBLY, EF | 183 |
| - | - | - | 2 | - | 21045-3 | RING, RETAIN, EXTERN, 3/16 CRESCENT | 172 |
| - | 1 | 1 | 1 | 1 | 994969-1 | MAGNET, RARE EARTH HIGH ENERGY | 166 |
| - | REF | REF | REF | REF | 994970-2 | COUNTER, MAGNETIC | 164 |
| - | - | - | 1 | - | 240638-1 | SPRING, FEED FINGER | 163 |
| - | 1 | 1 | 1 | 1 | 8-21084-1 | O-RING, .801 ID, .070 DIA. MAT. | 153 |
| - | - | - | 1 | - | 2119641-2 | FEED CAM, AIR FEED | 152 |
| - | 1 | 1 | 1 | 1 | 2119798-2 | DETENT PIN | 145 |
| - | 1 | 1 | 1 | 1 | 2079383-8 | SCR, BHSC, RoHS (M4 X 16) | 144 |
| - | - | - | - | 1 | 2119653-2 | FEED CAM, POST FEED | 142 |
| - | 1 | 1 | 1 | 1 | 2119655-6 | APPLICATOR BASIC ASSEMBLY, EF | 141 |
| - | 1 | 1 | 1 | 1 | 2119651-1 | RAM, ASIAN STYLE, END FEED | 140 |
| - | 1 | 1 | 1 | 1 | 2119092-2 | BOLT, ADJUSTMENT | 139 |
| - | - | - | 1 | - | 3-23627-7 | PIN, RETAIN, GRVD, 3/16 X .854 | 137 |
| - | - | REF | - | - | SEE NOTE 4 | MEMORY CHIP, PROGRAMMED | 135 |
| - | - | 1 | - | - | 1633743-1 | SERVO FEED LATCH ASM | 133 |
| - | 1 | 1 | 1 | 1 | 455888-4 | SPACER, CRIMPER | 82 |
| - | 1 | 1 | 1 | 1 | 2119956-2 | DOCUMENTATION PACKAGE | 71 |
| - | 2 | 2 | 2 | 2 | 2-18032-2 | SCR, SET, FLT POINT M3 X 10.0 | 70 |
| - | 1 | - | 1 | 1 | 2119740-1 | TAG, IDENTIFICATION | 67 |
| - | 2 | 2 | 2 | 2 | 2168078-1 | SCREW, DRIVE, RH, RoHS, 2 x .188 | 66 |
| - | 2 | 2 | 2 | 2 | 2168400-5 | SHCS, LOW HEAD, RoHS, M4 X 20 | 64 |
| - | 1 | 1 | 1 | 1 | 2119793-1 | LIMITER, ADJUSTMENT BOLT | 63 |
| - | 3 | 3 | 3 | 3 | 992763-5 | SCR, SET, SOC, CONE POINT, M3 X 4.0 | 62 |
| - | - | - | - | 1 | 5-18022-5 | SCR, HEX HD CAP, M4 X 6.0 | 59 |
| - | - | - | - | 1 | 2063961-1 | FEED FINGER | 58 |
| - | 3 | 3 | 3 | 3 | 2168400-4 | SHCS, LOW HEAD, RoHS, M4 X 8 | 57 |
| - | 2 | 2 | 2 | 2 | 2168083-9 | SCR, SKT HD CAP, RoHS, M4 X 20 | 56 |
| - | 2 | 2 | 2 | 2 | 5018030-2 | NUT, HEX, REG, RoHS, M4 | 55 |
| - | 2 | 2 | 2 | 2 | 5018030-1 | NUT, HEX, REG, RoHS, M3 | 54 |
| - | 2 | 2 | 2 | 2 | 986965-8 | NUT, LOCK, HEX, TORQUE (M4) | 53 |
| - | - | - | 1 | - | 2119792-1 | PAWL, EF, AIR | 51 |
| - | - | - | 1 | 2 | 18023-9 | SCR, SKT HD CAP M4 X 6.0 | 49 |
| - | - | - | - | 1 | 2119652-1 | FEED CAM, PRE FEED | 48 |
| - | 1 | 1 | 1 | 1 | 2119653-1 | FEED CAM, POST FEED | 47 |
| - | 1 | 1 | 1 | 1 | 2079383-7 | SCR, BHSC, RoHS (M8 X 25) | 41 |
| - | 1 | 1 | 1 | 1 | 2119645-1 | DISC, NUMBERED FA WIRE ADJUSTMENT | 40 |
| - | 1 | 1 | 1 | 1 | 2119957-1 | APPLICATOR SHIM PACK | 39 |
| - | 1 | 1 | 1 | 1 | 1-2119644-2 | RAM WASHER, PRECISION | 38 |
| - | 7 | 7 | 7 | 7 | 1-18028-2 | WASHER, FLAT, REG M4 | 33 |
| - | 2 | 2 | 2 | 2 | 2168083-9 | SCR, SKT HD CAP, RoHS, M4 X 20 | 31 |
| - | 2 | 2 | 2 | 2 | 1-2168083-0 | SCR, SKT HD CAP, RoHS, M4 X 10 | 29 |
| - | 1 | 1 | 1 | 1 | 240639-1 | STRIPPER (MACHINING) | 27 |
| - | 2 | 2 | 2 | 2 | 1320906-1 | STUD, THREADED | 25 |
| - | 1 | 1 | 1 | 1 | 1752371-5 | PLATE, STRIP GUIDE | 24 |
| - | 1 | 1 | 1 | 1 | 240825-1 | PLATE, STRIP HOLD DOWN | 23 |
| - | 2 | 2 | 2 | 2 | 2-22281-3 | SPRING, COMPRESSION | 22 |
| - | 1 | 1 | 1 | 1 | 1752373-4 | DRAG | 20 |
| - | 2 | 2 | 2 | 2 | 1901259-5 | GUIDE, LOWER STRIP | 18 |
| - | 1 | 1 | 1 | 1 | 4-240641-5 | SPACER | 16 |
| - | 1 | 1 | 1 | 1 | 240644-1 | PLATE, REAR SHEAR | 11 |
| - | - | - | - | - | - | - | 10 |
| - | 1 | 1 | 1 | 1 | 690482-5 | PLATE, FRONT SHEAR | 9 |
| - | 1 | 1 | 1 | 1 | 1-1333219-4 | ANVIL, COMBINATION | 8 |
| - | 1 | 1 | 1 | 1 | 2217206-7 | BLADE, SLUG | 7 |
| - | - | - | - | - | - | - | 6 |
| - | 1 | 1 | 1 | 1 | 240641-6 | SPACER | 5 |
| - | 1 | 1 | 1 | 1 | 1-238009-4 | BLOCK, FL CRIMPER SPACER | 4 |
| - | 1 | 1 | 1 | 1 | 4-2119582-9 | CRIMPER, INSULATION F PREMIUM | 3 |
| - | 1 | 1 | 1 | 1 | 455888-9 | SPACER, CRIMPER | 2 |
| - | 1 | 1 | 1 | 1 | 456408-2 | CRIMPER, WIRE PREMIUM | 1 |

| DIMENSIONS: | | TOLERANCES UNLESS OTHERWISE SPECIFIED: | | DWG | | REV | |
|-------------|--------|--|-----------|--------|-----------|--|---------------------------|
| mm | 0 PLC | ± | 03OCT2013 | OFFNER | 03OCT2013 | NAME | TE Connectivity |
| | 1 PLC | ± | 03OCT2013 | ELBIN | 03OCT2013 | SIZE | Harrisburg, PA 17105-3608 |
| | 2 PLC | ± | 03OCT2013 | ELBIN | 03OCT2013 | SCALE | 1:1 |
| | 3 PLC | ± | 03OCT2013 | ELBIN | 03OCT2013 | SHEET | 3 OF 4 |
| | 4 PLC | ± | 03OCT2013 | ELBIN | 03OCT2013 | REV | B |
| | ANGLES | ± | 03OCT2013 | ELBIN | 03OCT2013 | Customer Accessible Production Drawing | |
| | FINISH | ± | 03OCT2013 | ELBIN | 03OCT2013 | SCALE 1:1 SHEET 3 OF 4 REV B | |

