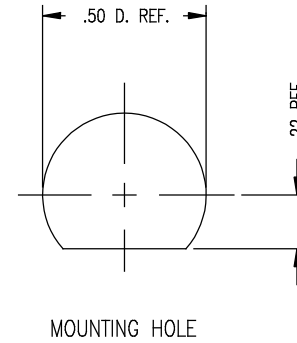
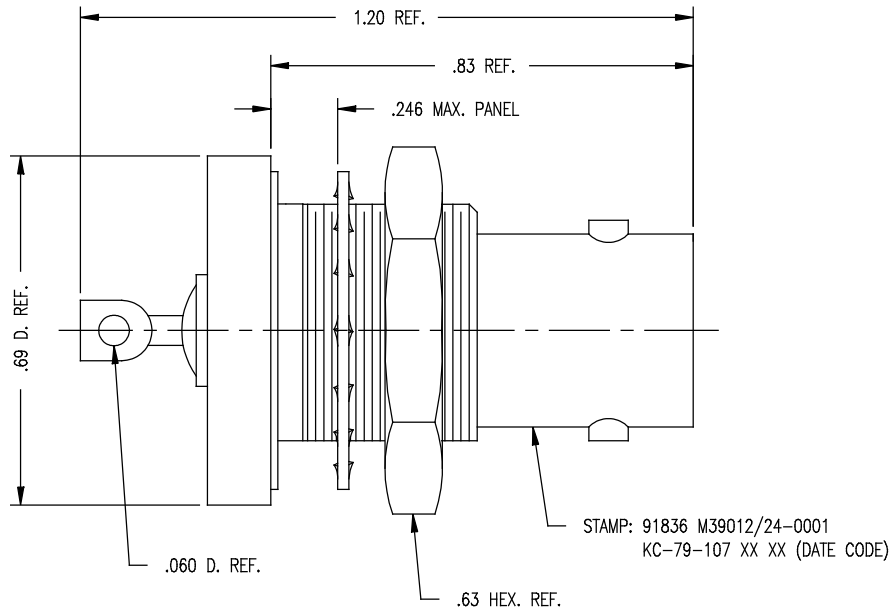


DASH NO.	M CODE	MADE FROM
----------	--------	-----------

GSD

M39012/24-0001

REVISIONS	
ISSUE	CHANGES
5	CN 33710 E REDRAWN JCA 02/05/92
6	CN 39168 C JPK 09/27/04



- NOTES:
- INTERFACE PER MIL-STD-348, FIG. 301-1.
 - MATERIALS:
 INSULATOR: TEFLON, ASTM-D-4894
 GASKET: SILICONE RUBBER, A-A-59588
 CENTER CONTACT: BER. COP., ASTM-B-196
 LOCKWASHER: PHOS. BRONZE, ASTM-B-103
 ALL OTHER METAL PARTS: BRASS, ASTM-B16
 - FINISHES:
 CENTER CONTACT: HARD GOLD PLATE PER ASTM-B-488
 GLASS SEAL: TIN DIPPED
 ALL OTHER METAL PARTS: SILVER PLATE PER ASTM-B-700
 - ELECTRICAL CHARACTERISTICS:
 NOMINAL IMPEDANCE: 50 OHMS
 VOLTAGE RATING: 500 VRMS
 FREQUENCY RANGE: DC TO 4
 - ENVIRONMENTAL:
 LEAKAGE RATE SHALL NOT EXCEED 1×10^{-5} cc/sec OF TRACER GAS AT ATMOSPHERIC PRESSURE.

STAMP: 91836 M39012/24-0001
KC-79-107 XX XX (DATE CODE)

KC-79-107SD

SCALE 4:1	
APPROX SURFACE AREA	
KC-79-107	
USED ON	
REF: SUPERSEDES UG-911A/U	
RECEPTACLE, BULKHEAD, HERMETIC SEAL, BNC	
DRAWN JCA	DATE 02/05/92
DESIGN MJB	DATE 02/06/92
APPR.	DATE

KINGS
ELECTRONICS CO., INC.
ROCK HILL, SOUTH CAROLINA 29730

GSD

M39012/24-0001