

# KMS Series Microminiature SMT Side Actuated

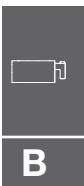


## Features/Benefits

- Compact size
- Excellent tactile feel
- ESD protection
- Positioning pegs for stability
- RoHS compliant and compatible

## Typical Applications

- Mobile phones
- Medical handheld monitors
- Consumer electronics
- Telecommunication networks



Tactile Switches

## Specification

FUNCTION: Momentary  
CONTACT ARRANGEMENT: SPST, N.O.  
TERMINALS: Gullwing type for SMT  
IP40 Sealed

## Mechanical

OVERLOAD: 20N  
TACTILE FEELING: 15% min. for the 2N version  
25% min for the 2.5N version

| Type       | Operating force<br>Newtons (grams) | Operating life<br>(operations) | Travel      |
|------------|------------------------------------|--------------------------------|-------------|
| KMS221G/GP | 2N (200) ± 0.5                     | 100 K cycles                   | 0,25 ± 0,15 |
| KMS223G/GP | 2N (200) ± 0.5                     | 100 K cycles                   | 0,25 ± 0,15 |
| KMS231G/GP | 3N (300) ± 0.6                     | 100 K cycles                   | 0,3 ± 0,15  |
| KMS233G/GP | 3N (300) ± 0.6                     | 100 K cycles                   | 0,3 ± 0,15  |

**Note:** Specifications listed above are for switches with standard options. For information on specific and custom switches, consult Customer Service Center.

## Packaging

Tape and reels in reels of 3,000 pieces.  
External diameter 330mm ± 2mm.

## Electrical

|  | Silver | Gold   |
|--|--------|--------|
| MAXIMUM POWER:                           | 1 VA   | 0.2 VA |
| MAXIMUM VOLTAGE:                         | 32 VDC | 32 VDC |
| MAXIMUM CURRENT DC:                      | 50 mA  | 10 mA  |
| MINIMUM CURRENT DC:                      | 1 mA   | 1 mA   |
| DIELECTRIC STRENGTH: 250 VDC             |        |        |
| CONTACT RESISTANCE: ≤100 mΩ              |        |        |
| INSULATION RESISTANCE: 10 <sup>9</sup> Ω |        |        |
| BOUNCE TIME: ≤ 3 ms                      |        |        |

## Environmental

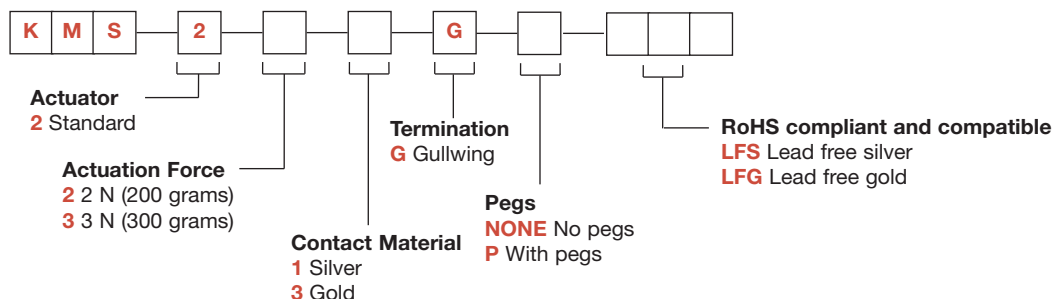
|                        | Silver        | Gold           |
|------------------------|---------------|----------------|
| OPERATING TEMPERATURE: | -40°C to 85°C | -40°C to 125°C |
| STORAGE TEMPERATURE:   | -55°C to 85°C | -55°C to 125°C |

## Process

Infrared reflow soldering in accordance with IEC 61760-1

## How To Order

Our easy build-a-switch concept allows you to mix and match options to create the switch you need. To order, select desired option from each category and place it in the appropriate box.

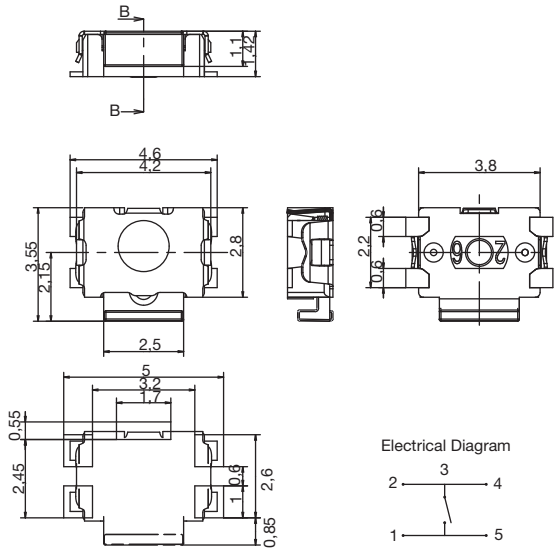


# KMS Series Microminiature SMT Side Actuated

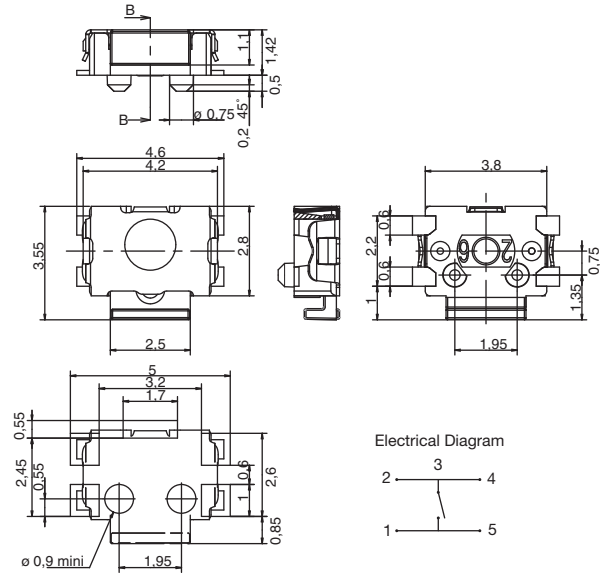
Tactile Switches

B

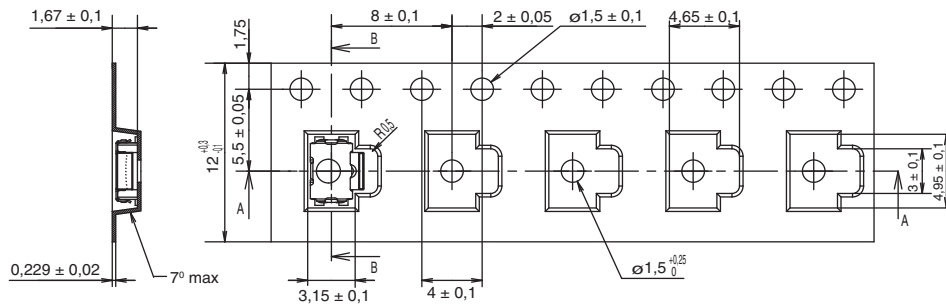
## KMS



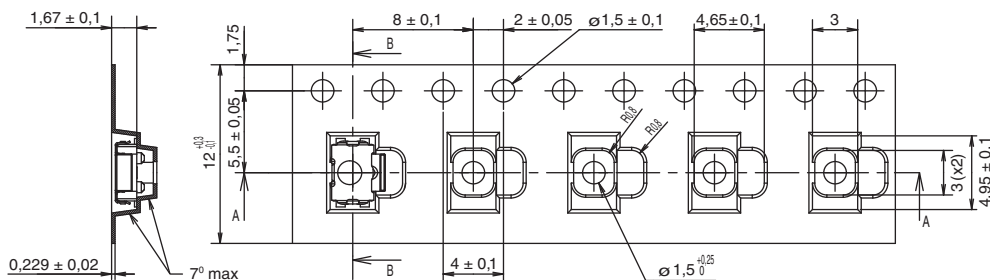
## KMS WITH PEGS



## TAPE & REEL



## WITH PEGS



→  
DIRECTION OF FEED

First Angle Projection

Dimensions are shown: mm  
Specifications and dimensions subject to change



13 aug 12