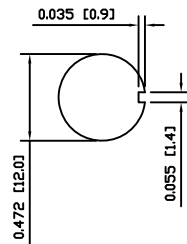
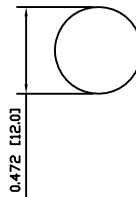


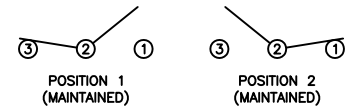
SUGGESTED PANEL CUTOUT



ALTERNATE PANEL CUTOUT



SCHEMATIC



MATERIALS

- BODY:
Phenolic, UL94 V-0
- ACTUATOR:
Nickel Plated Brass
- BUSHING:
Nickel Plated Brass
- HOUSING:
Stainless Steel
- HARDWARE:
Nickel Plated Steel
- FUNCTION PLATE:
Stainless Steel
- SPACER PLATE:
Laminate Board
- SPRING:
Steel
- PLUNGER:
Nylon
- MOBILE CONTACT:
Silver Plated Copper
- MOBILE CONTACT PIVOT:
Silver Plated Copper
- CONTACTS:
Silver Alloy Clad Copper
- TERMINALS:
Brass

SPECIFICATIONS

- FUNCTION:
1P2T ON-ON
- RATINGS:
ANSI/UL1054 and CAN/CSA C22.2 No.55 (E194579):
20A 125VAC [cURus]
15A 277VAC [cURus]
2HP 125/277VAC [cURus]
- CONTACT RESISTANCE:
Initial: 50mΩ Max. at 50VAC
- INSULATION RESISTANCE:
800MΩ Min. at 500VDC
- DIELECTRIC STRENGTH:
1,500VAC for 1 Minute
- OPERATING LIFE:
6,000 Cycles [cURus]
- TEMPERATURE:
Operating: -20°C to 85°C [cURus]
- APPROVALS:



ACTUATOR	A	09/05/26	CAB
BODY	A	09/05/26	CAB
MATERIALS	A	09/05/26	CAB
SPECIFICATIONS	A	09/05/26	CAB
REFERENCE	REV.	DATE	BY

THE INFORMATION CONTAINED IN THIS DOCUMENT IS PROPRIETARY TO E-SWITCH AND IS NOT TO BE COPIED OR TRANSFERRED

A	INITIAL RELEASE	PCRD0051	09/08/05	CAB
REV.	DESCRIPTION	PCR	DATE	DRAWN BY

DIMENSIONS	INCHES [MILLIMETERS]
GENERAL TOLERANCES	±0.008 [±0.2] / ±1'
SCALE	DRAWING NOT TO SCALE
PROJECTION	

ST143D00		
DRAWING NUMBER	DATE	REVISION
34-ST143D00	AUGUST 5, 2009	A