

NOTES: UNLESS OTHERWISE SPECIFIED

1. INTERFACE COMPLIANT TO SMPTE 304 SPECIFICATION.

2. MATERIAL SPECIFICATIONS:

CONTACTS: COPPER ALLOY  
 ALIGNMENT PINS: BRASS PER ASTM B16  
 CRIMP SLEEVE: PHOS. BRONZE  
 O-RINGS AND STRAIN RELIEF: SILICONE RUBBER  
 ALL PLASTIC PARTS: 20% GLASS FILLED POLYPROPYLENE  
 ALL OTHER METAL PARTS: 303 STAINLESS STEEL PER ASTM A582

3. FINISH SPECIFICATIONS:

STAINLESS STEEL PARTS: PASSIVATE  
 CONTACTS: .000100 MIN GOLD PER ASTM B488 OVER  
 .000080 MIN NICKEL PER AMS-QQN-290 (RoHS)  
 CRIMP SLEEVE: .000100 MIN NICKEL PER AMS-QQ-N-290 OVER  
 COPPER FLASH PER ASTM B734 (RoHS)

4. ELECTRICAL SPECIFICATIONS:

LOW VOLTAGE CONTACTS: 42 - 60 VAC, 1 AMP  
 AUX ELECTRICAL CONTACTS: 600 VAC, 10 AMP

5. ENVIRONMENTAL:

OPERATING TEMPERATURE RATING: -40°C TO 75°C  
 NON-OPERATING/STORAGE TEMPERATURE RATING: -40°C TO 85°C  
 HUMIDITY: <95 RH (AT 40°C)

6. OPTICAL:

WAVELENGTH: 1100nm - 1350nm  
 INSERTION LOSS: 0.3dB TYPICAL, 0.5dB MAX  
 RETURN LOSS: > -45dB, -50dB TYPICAL

7. REPLACEMENT KITS:

CONTACT KIT: 7760-000-00702Z

8. CABLE PREPARATION AND STRIPPING PROCEDURE: CAP-E05.

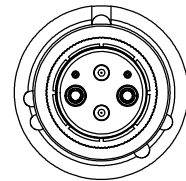
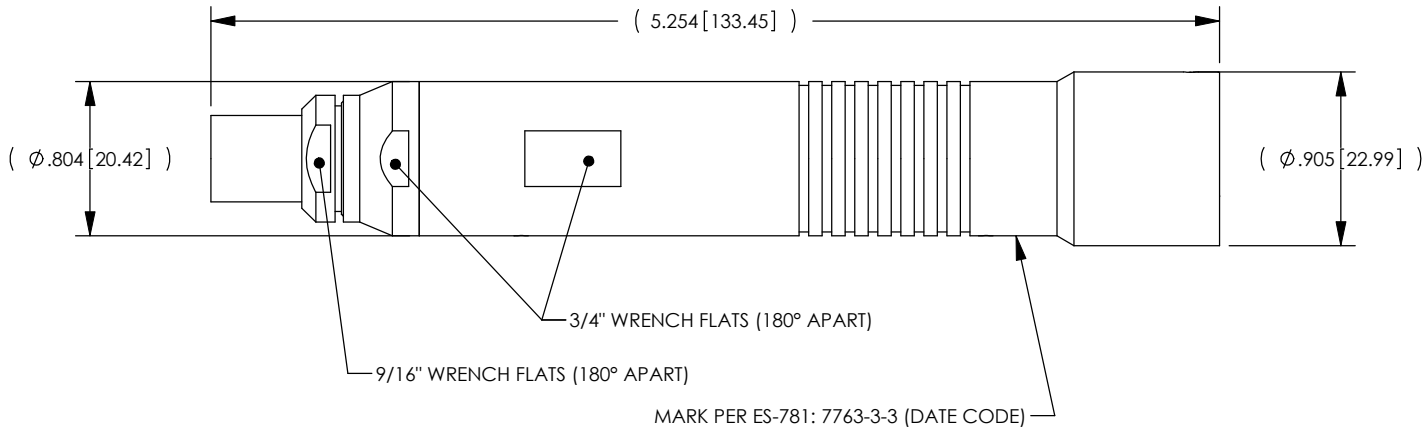
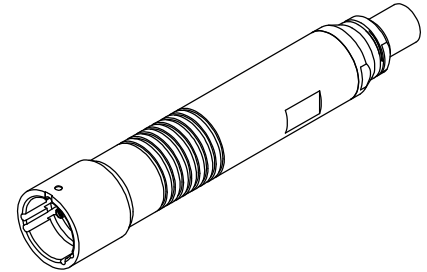
9. OPTIONAL ENVIRONMENTAL BOOT 7760-000-00705Z SOLD SEPARATELY.

10. RED LDPE DUST CAP INCLUDED (NOT SHOWN)

11. CRIMP TOOLING:

FOR FACTORY APPLICATION USE HAND TOOL KTH-1000 AND DIE KTH-2035  
 FOR FIELD APPLICATION USE HAND TOOL KTH-5000 AND DIE KTH-5018

| REV | DESCRIPTION         | BY DATE         | APPD |
|-----|---------------------|-----------------|------|
| D   | REVISED PER ER30231 | JCF<br>01/09/10 | XX   |

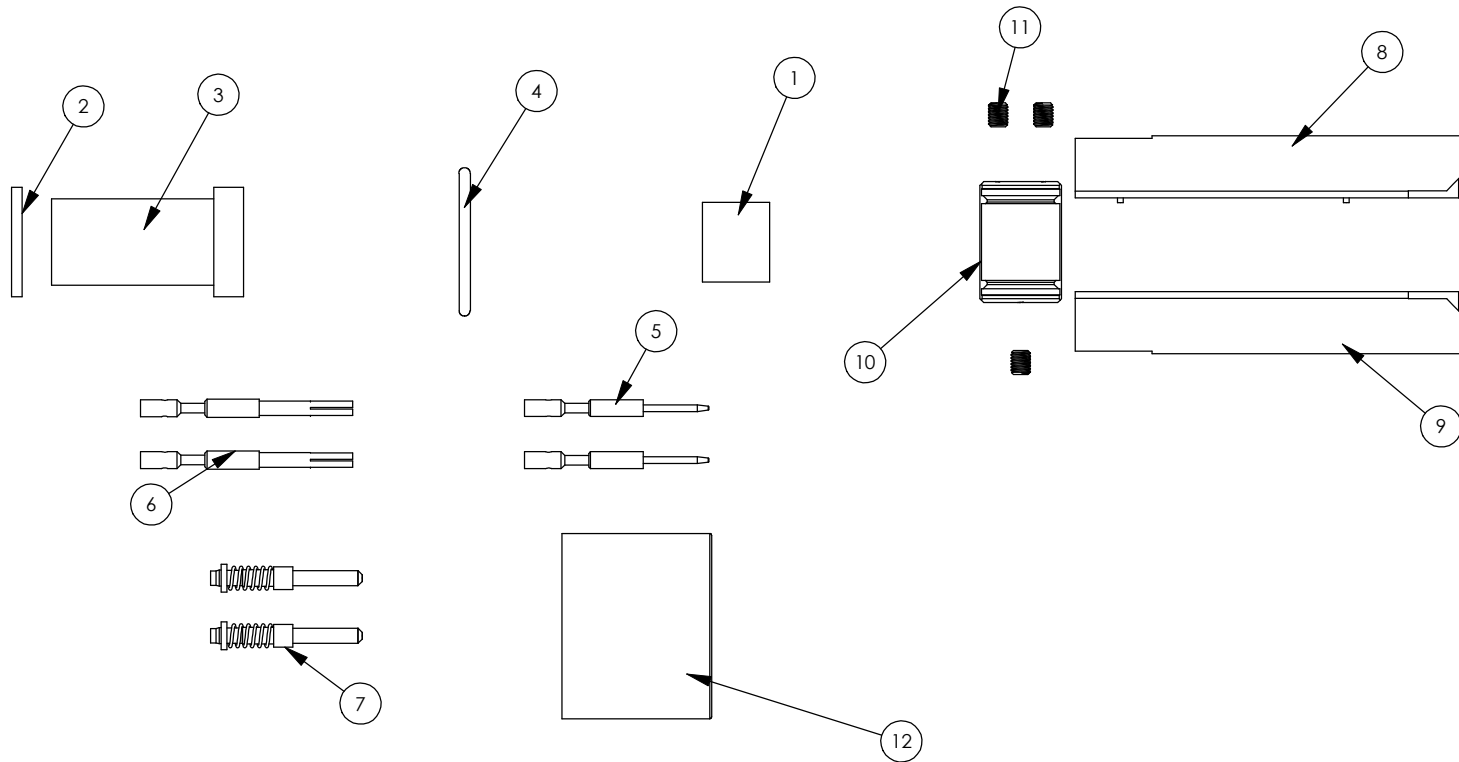


CATALOG P/N: 7763-3-3

|  |          |          |          |                              |            |   |         |          |
|--|----------|----------|----------|------------------------------|------------|---|---------|----------|
| PER ASME Y14.5M-1994<br>UNLESS OTHERWISE SPECIFIED:<br>DIMENSIONS ARE IN INCHES [MM]<br>TOLERANCES:<br>DECIMAL: .XX [X.X] ± .01 [0.3]<br>.XXX [X.XX] ± .005 [0.13]<br>.XXXX [X.XXX] ± .XXXX<br>ANGLES: ± 2° SCALE: 1:1 |          |          |          | by WINCHESTER<br>ELECTRONICS |            | Winchester Electronics Corporation<br>62 Barnes Industrial Road North<br>Wallingford, Connecticut 06492 |         |          |
| CUSTOMER SALES DRAWING   |          |          |          | THIRD ANGLE                  |            | TRI-LOC, SMPTE 304, RECEPTACLE  |         |          |
| DRAWN  | DATE     | APPROVED | DATE     | <b>A</b>                     | SD7763-3-3 | SHT<br>1  | OF<br>2 | REV<br>D |
| PSM  | 03/25/09 | RL       | 08/03/09 |                              |            |   |         |          |
| APPROVED   | DATE     | APPROVED | DATE     |                              |            |   |         |          |
| WPM  | 08/03/09 | JCF      | 01/19/10 |                              |            |   |         |          |

| REV | DESCRIPTION         | BY DATE         | APPD |
|-----|---------------------|-----------------|------|
| D   | REVISED PER ER30231 | JCF<br>01/06/11 | XXX  |

# REPLACEMENT COMPONENT ORDERING NUMBERS



| 12       | VNSC-748U | RED LDPE PROTECTIVE CAP, .906" ID     | 25   |
|----------|-----------|---------------------------------------|------|
| 11       | 78-0102U  | #4-40 HEX SET SCREW                   | 10   |
| 10       | 78-1012U  | STRENGTH MEMBER SUPPORT CLAMP         | 10   |
| 9        | 78-3011U  | JACK INSULATOR HALF SIDE "A"          | 25   |
| 8        | 78-3010U  | JACK INSULATOR HALF SIDE "B"          | 25   |
| 7        | 78-7016U  | TERMINI FOR MANUAL POLISH W/PROT. CAP | 10   |
| 6        | 78-4204U  | JACK MALE CRIMP CONTACT               | 50   |
| 5        | 78-4203U  | JACK FEMALE CRIMP CONTACT             | 50   |
| 4        | 78-0705U  | REAR O-RING                           | 25   |
| 3        | 78-0701U  | REAR CABLE SEAL                       | 25   |
| 2        | 78-0301U  | WASHER FOR REAR CABLE SEAL            | 25   |
| 1        | 1-8156U   | CRIMP SLEEVE (CABLE SHIELD FERRULE)   | 25   |
| ITEM NO. | PART NO.  | Description                           | QTY. |

CATALOG P/N: 7763-3-3

|  |  |   |                                       |
|--|--|---|---------------------------------------|
| <small>PER ASME Y14.5M-1994<br/>UNLESS OTHERWISE SPECIFIED:<br/>DIMENSIONS ARE IN INCHES [MM]<br/>TOLERANCES:<br/>DECIMAL: .XX [X.X] ± .01 [0.3]<br/>.XXX [X.XX] ± .005 [0.13]<br/>.XXXX [X.XXX] ± .XXXX<br/>ANGLES: ± 2° SCALE: 1:1</small> |  | <br>by WINCHESTER<br>ELECTRONICS<br>Winchester Electronics Corporation<br>62 Barnes Industrial Road North<br>Wallingford, Connecticut 06492 |                                       |
| <b>CUSTOMER SALES DRAWING</b>  |  | THIRD ANGLE<br>   | <b>TRI-LOC, SMPTE 304, RECEPTACLE</b> |
| <small>DRAWN DATE</small><br>PSM 03/25/09  | <small>APPROVED DATE</small><br>RL 08/03/09  | <small>APPROVED DATE</small><br>JCF 01/19/10  | <b>A</b> SD7763-3-3                   |
| <small>APPROVED DATE</small><br>WPM 08/03/09   | <small>APPROVED DATE</small><br>JCF 01/19/10 | <small>SHT OF</small><br>2 2  | <small>REV</small><br>D               |