

GEL-2670 Version: 1

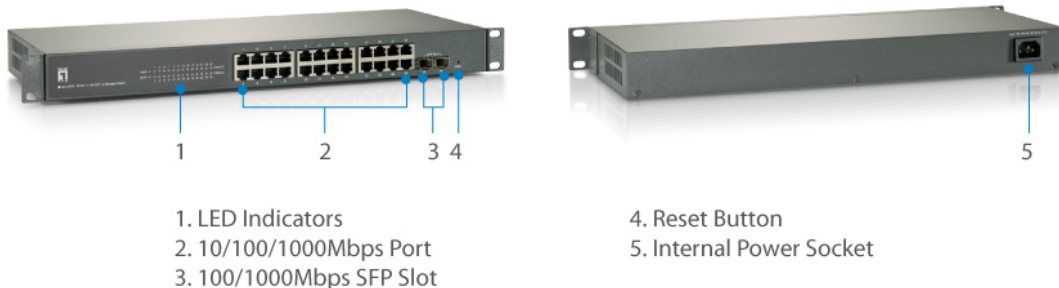


26-Port L2 Managed Gigabit Ethernet Switch, 2 x SFP

The LevelOne GEL-2670 is an intelligent L2 Managed Switch with 24 x 1000Base-T ports and 2 x 100/1000BASE-X SFP (Small Form Factor Pluggable) slots. Ideal for desktops, it is also 19-inch rack-mountable, which provides convenient and flexible installation.

The switch supports a flexible web-based management interface SNMP for both IPv4 and IPv6 as well as layer 2 management features. Despite its affordable pricing, the GEL-2670 is equipped with many advanced features such as Internet Group Management Protocol (IGMP) snooping V1/V2/V3, VLANs, IEEE 802.1D/w/s Spanning Tree, Access Control List (ACL) of up to 256 entries for easy network security, Link Aggregation Control Protocol (LACP), IEEE 802.1p QoS with 8 priority queues, UPnP for auto-discovery and configuration of devices, Storm Control for protecting against broadcast/multicast/unknown unicast and much more.

An ideal network solution for workgroups and edge deployments, or anyone looking for an affordable and efficient way to expand their network.



Key Features

- Supports port-based VLAN, IEEE 802.1Q VLAN Tagging
- IEEE 802.1d/w/s Spanning Tree Protocol (STP) and port mirroring
- 24 Gigabit Ethernet ports and 2 Gigabit SFP slots
- IEEE 802.3ad LACP for auto port aggregation
- Supports Access Control List (ACL) authentication of up to 256 entries and port-based security with IEEE802.1X
- IP Multicast Filtering through IGMP Snooping V1 / V2 / V3
-
- 10K jumbo frames to increase data transfer rates
- Supports 8K MAC address auto-learning and auto-aging

- IEEE 802.1p QoS with 8 priority queues
- Supports IPv4/IPv6 network operation
- IEEE 802.3x Flow Control protects against lost packets for reliable data transmission
- Supports Simple Network Time Protocol (SNTP) time server

Works With



FCS-4101

PT Dome Network Camera, 2-Megapixel, 802.3af PoE, Day & Night, IR LEDs

Specifications

System Specifications

Standards & Protocols:

IEEE 802.3 10-BASE-T, Ethernet
IEEE 802.3u 100-BASE-TX, Fast Ethernet
IEEE 802.3ab 1000BASE-T, Gigabit Ethernet
IEEE 802.1p Quality of Service (QoS)
IEEE 802.1Q Virtual LANs (VLANs)
IEEE 802.1D MAC Bridges
IEEE 802.1d Standard Spanning Tree Protocol (STP)
IEEE 802.1w Rapid Spanning Tree Protocol (RSTP)
IEEE 802.1s Multiple Spanning Tree Protocol (MSTP)
IEEE 802.1X Port-based Network Access Control (PNAC)
IEEE 802.3x Flow Control (full-duplex flow control)
IEEE 802.3ad Link Aggregation Control Protocol (LACP)
Universal Plug and Play (UPnP)

Memory:

128MB DDRII SDRAM H5PS1G83JFR-S5C

Buffer Memory:

512KB

Connectors and Cabling:

24 x 10/100/1000Base-T RJ-45 Ports
2 x 100/1000Base-X SFP Slots

Button:

Reset Button

Indicator:

Power, Link/Active

Transmission Method:

Store-and-Forward

Power:

Power Consumption: < 20W
Power Input: 100-240V AC, 50-60 Hz, 0.5A Internal Power Supply

Features

General:

Quality of Service (QoS):
8 hardware Priority Queues per port
Traffic classification based on IEEE 802.1p CoS, DSCP, Supports WRR, Strict scheduling, or hybrid mode
Rate Limiting - Ingress resolution 16 Kbps; Egress resolution 16 Kbps

Spanning Tree:

IEEE 802.1D MAC Bridges
IEEE 802.1d Spanning Tree Protocol (STP)

IEEE 802.1w Rapid Spanning Tree Protocol (RSTP)
IEEE 802.1s Multiple Spanning Tree Protocol (MSTP)
STP Auto Edge; Loop detection and prevention

Virtual Local Area Network (VLAN):

802.1Q tag-based VLAN - up to 4096 VLAN IDs; Voice VLAN; Private VLAN

IPv6:

IPv4/IPv6 Dual Protocol stack; IPv6 Address Types Stack (Unicast); ICMPv6; ICMPv6 Redirect (Host); Stateless Auto Configuration; IPv6 Neighbor Discovery; SNMP over IPv6; HTTP over IPv6; DHCPv6 Client; Remote IPv6 Ping; NTPv6

IGMP snooping: v1/v2/v3; immediate leave

Port Mirroring: One-to One and Many-to-One TX/RX

Port Trunking: IEEE 802.3ad LACP Trunk -Static Trunk up to 13 trunk groups

DHCP: DHCP Client; DHCP Relay (Layer 2)

Security:

Storm Control:

Prevents traffic on a LAN from being disrupted by a broadcast, multicast, or unicast storm on a port

Access Control:

SSH v1.5/v2 supported; HTTPS/SSL; IEEE 802.1X port based and MAC-based; EAPOL transparent; MAC authentication; Web authentication; Dynamic VLAN assignment

Port security: static and dynamic

ACLs: Support for up to 256 entries

Filtering: Port-/MAC-/IP-based security

Management:

Diagnosis:

local flash, syslog, remote server (RFC3164) and SMTP (RFC821)

Network:

RMON (groups 1, 2, 3 and 9) Management; SNMP v1, v2, v3 User-based Security Model (USM); DNS client, proxy; HTTP Server; HTTPs; SSHv2; LLDP (802.1ab) and LLDP-MED SNTP (IPv4/IPv6)

Ease of Use:

Firmware and Configuration: upgrade/downgrade via TFTP/HTTP

Performance

Backplane (Gbps):

52Gbps

MAC Address Table:

8K

Data Transfer Rate:

10/100/1000Mbps

Packet Forwarding Rate:

1000Mbps port - 1,488,000pps

100Mbps port - 148,000pps

10Mbps port - 14,880pps

Jumbo Frame (K):

10K

Environment



Temperature (°C):
Operating: 0°C ~ 50°C
Storage: -40°C ~ 70°C

Humidity (Non-condensing):
Storage: 10% ~ 90%
Operating: 10 ~ 90%

Deployment:
19-inch rack-mountable

Physical Specifications

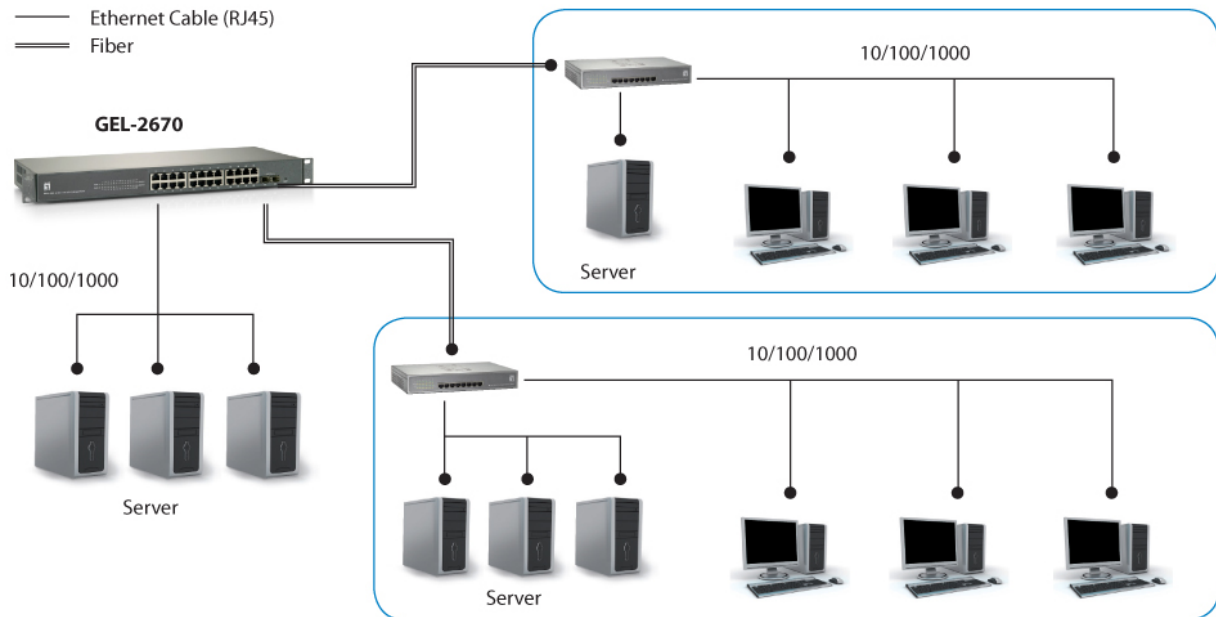
Dimensions (W x D x H mm):
440 x 173 x 44.5 mm

Weight (g):
1910g

Others

Approval and Compliance:
FCC Part 15 Class A, CE, RoHS

Diagram



Order Information

GEL-2670

Package Contents

GEL-2670
Resource CD (User Manual)
Power Cord
19" Rackmount Kit
Rubber Feet
Quick Installation Guide
Module Brackets

No liability or responsibility for any errors or omissions in the content.
Specifications are subject to change without notice.
All mentioned brand names are registered trademarks and property of their owners.
Copyright © Digital Data Communications GmbH, Germany. All Rights Reserved.