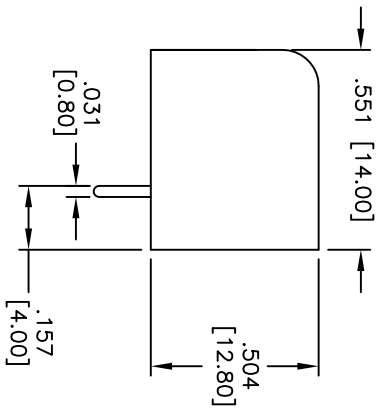
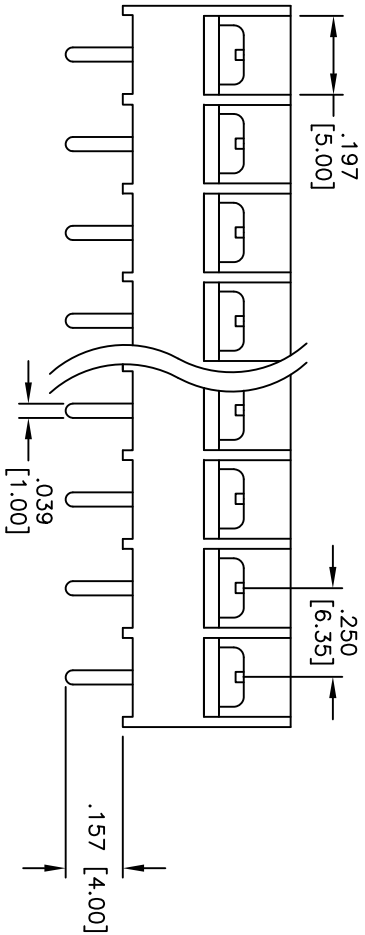
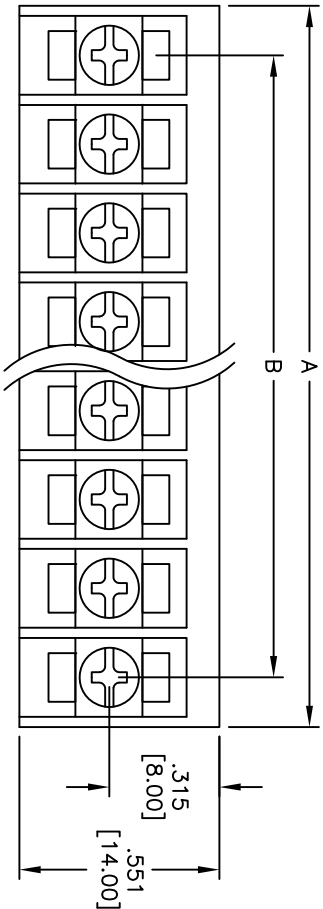


APPROVED: \_\_\_\_\_  
 DATE: \_\_\_\_\_ TITLE: \_\_\_\_\_

Rev	AWO #	Description	Date	Appr
-		RELEASED	6/7/05	
A		REDRAWN	7/12/12	



**SPECIFICATIONS:**

**Material:**

Insulator: PA66, rated UL 94V-0

Insulator color: Black

Contacts: Brass, Tin Plated

Screws: M3, Nickel Plated Steel

**Electrical:**

Operating voltage: 300 VAC max.

Current rating: 10 Amps max.

Insulation resistance: 1,000 Mohms min. @ DC500V

Dielectric withstanding voltage: 2,000 VAC for 1 minute

**Mechanical:**

Wire Range(AWG): 16~22

Screw Torque Value (Kg-cm): 10

Temperature Rating:

Operating temperature: -40°C to +120°C

Environmental:

Lead free, RoHS compliant

Positions: 2 thru 32  
 A = .250 [6.35] x No. of Positions + .051 [1.30]  
 B = .250 [6.35] x No. of Spaces

UNLESS OTHERWISE SPECIFIED  
 ALL DIMENSIONS ARE INCHES [MM]  
 TOLERANCES: EXCEPT AS NOTED  
 INCHES HOLE SIZES

.X	± .10	ØX	± .10
.XX	± .020	ØXXX	± .015
.XXX	± .015	ØXXXX	± .010

APPROVALS: \_\_\_\_\_ DATE: \_\_\_\_\_

DRAWN: SS 6/7/05

CHECKED: \_\_\_\_\_

APPROVED: \_\_\_\_\_

**ADAM TECH**

909 Rahway Avenue, Union, NJ 07083

Phone: 908-687-5000 Fax: 908-687-5710

TITLE: 250 [6.35] CLOSED SIDE BARRIER BLOCK

VERTICAL, PCB TAILS, BARRIER ENDS

SIZE: X PART NO. TBB-XX-01-B REV. A

REF: S00031T SCALE: NTS SHEET 1 OF 1



6

5

4

3

2

1