

PLEASE CHECK WWW.MOLEX.COM FOR LATEST PART INFORMATION

Part Number: [0010101034](#)
Status: **Active**
Overview: [kk](#)
Description: 5.08mm (.200") Pitch KK® PC Board Connector, Right Angle Mount Style A, 0.5µm (20µ") Gold (Au), 3 Circuits

Documents:

[3D Model](#) [Product Specification PS-99020-0087 \(PDF\)](#)
[Drawing \(PDF\)](#) [RoHS Certificate of Compliance \(PDF\)](#)

Agency Certification

CSA LR19980
 UL E29179

General

Product Family PCB Receptacles
 Series [3002](#)
 Application Board-to-Board
 Overview [kk](#)
 Product Name KK®

Physical

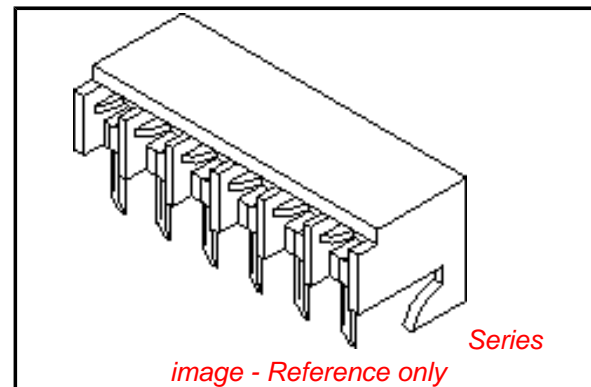
Circuits (Loaded) 3
 Color - Resin Natural
 Durability (mating cycles max) 25
 Flammability 94V-2
 Glow-Wire Compliant No
 Material - Metal Phosphor Bronze
 Material - Plating Mating Gold
 Material - Plating Termination Gold
 Material - Resin Nylon
 Number of Rows 1
 Orientation Right Angle
 PC Tail Length (in) 0.169 In
 PC Tail Length (mm) 4.30 mm
 PCB Locator No
 PCB Retention Yes
 PCB Thickness Recommended (in) 0.062 In
 PCB Thickness Recommended (mm) 1.60 mm
 Packaging Type Tray
 Pitch - Mating Interface (in) 0.200 In
 Pitch - Mating Interface (mm) 5.08 mm
 Plating min: Mating (µin) 15
 Plating min: Mating (µm) 0.375
 Plating min: Termination (µin) 2
 Plating min: Termination (µm) 0.05
 Polarized to PCB Yes
 Temperature Range - Operating 0°C to +75°C
 Termination Interface: Style Through Hole

Electrical

Current - Maximum per Contact 7A
 Voltage - Maximum 250V

Material Info

Old Part Number 300203AG



EU RoHS

ELV and RoHS Compliant
REACH SVHC
 Not Reviewed
Halogen-Free Status
 Not Reviewed

China RoHS



Need more information on product environmental compliance?

Email productcompliance@molex.com
 For a multiple part number RoHS Certificate of Compliance, [click here](#)

Please visit the [Contact Us](#) section for any non-product compliance questions.

Search Parts in this Series

[3002Series](#)

Mates With

[3003](#) , [2599](#) , [3008](#)

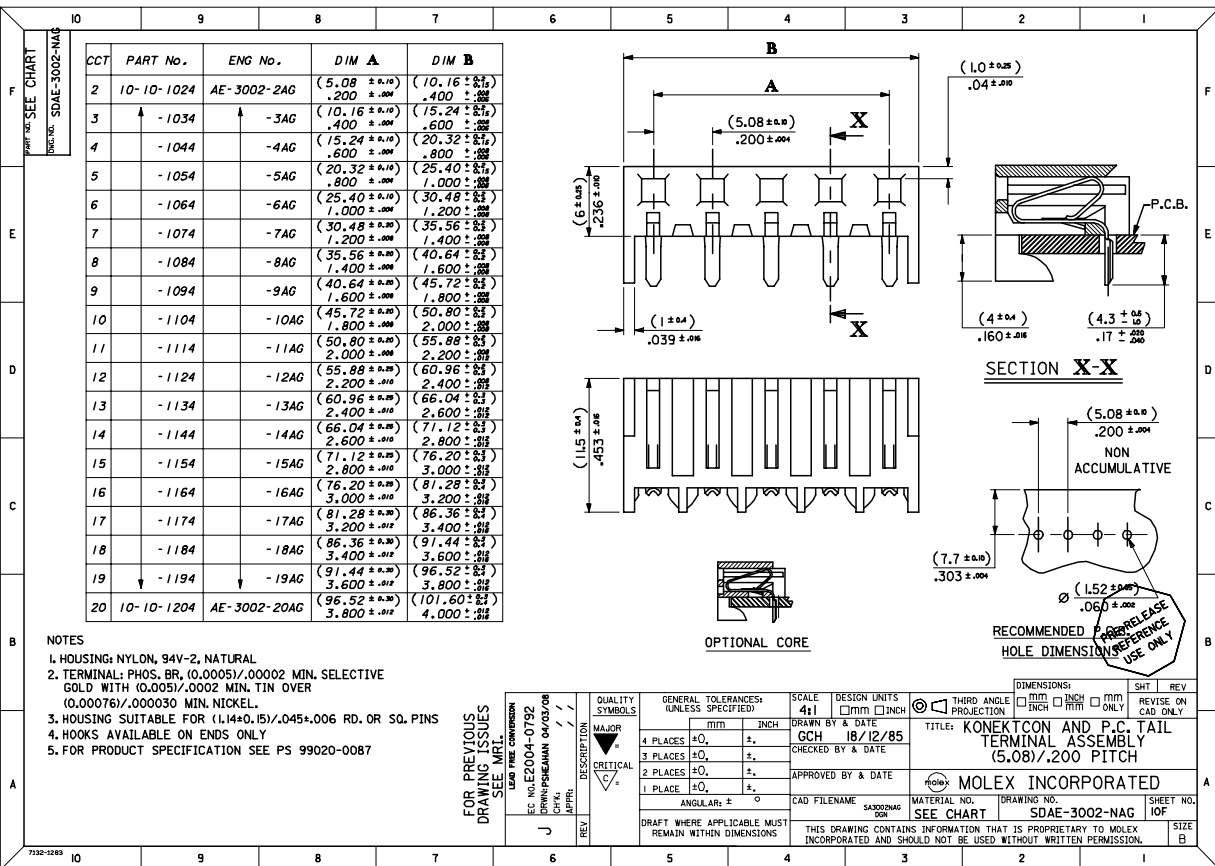
Reference - Drawing Numbers

Product Specification
Sales Drawing

PS-99020-0087
SDAE-3002-NAG

This document was generated on 05/21/2010

PLEASE CHECK WWW.MOLEX.COM FOR LATEST PART INFORMATION



SHT. 1 OF 1						MRI-SDAE-3002-NAG
MODIFICATION RECORD INDEX						
ERO	ECO	ISS.	DATE	INIT.	SHTS-AFFECTED	DESCRIPTION OF MOD.
7435	---	---	18.1.70	RE	1	---
7660	---	A	1.3.78	RE	1	FINAL RELEASE -6AG & -8AG
363	---	B	24.8.82	GH	1	EDP No.FOR -2AG ADDED
1139	---	C	18.9.85	GH	1	EDP No.FOR -4AG ADDED
---	609	D	19.12.85	GH	1	EDPs.FOR -4AG & -6AG MODIFIED DRG. REDRAWN ON CAD.
---	745	E	1.8.86	GH	1	EDPs.FOR -3,-5,-7 AND -9 THRO' -20 ADDED HOUSING INTO LINE WITH TOOL.
---	958	F	20.10.87	MC	1	PLTG. CHANGED
ECR/ECN	ISS.	DATE	INIT.	SHTS-AFFECTED	DESCRIPTION OF MOD.	
E10121	G	91.5.29	PMMN	1	DIM 'B' TOL CHANGES	
E2003-0992	H	03.03.27	PS	1	NEW PROD.SPEC.99020-0087 ADDED	
MOLEX EUROPE			REVISE ONLY ON CAD SYSTEM			
THIS DRAWING CONTAINS INFORMATION THAT IS PROPRIETARY TO MOLEX INC. & SHOULD NOT BE USED WITHOUT WRITTEN PERMISSION.			CADDWG FILENAME		ISSUE	
			SA3002NAG .DGN		H	

LEVEL CHART

1	TERMINAL-DETAILS	17	33	49
2		18	34	50
3		19	35	51
4		20	36	52
5		21	37	53
6		22	38	54
7		23	39	55
8		24	40	56
9		25	41	57
10		26	42	58
11	HOUSING-DETAILS	27	43	59
12	CROSS HATCHING	28	44	60
13		29	45	61
14		30	46	62
15		31	47	63
16		32	48	64