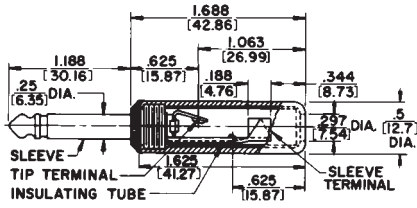
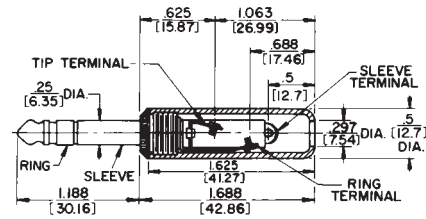


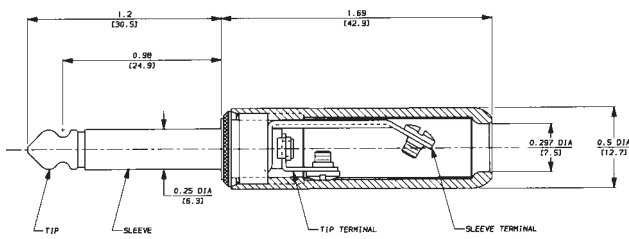
1/4" COMMERCIAL PHONE PLUGS



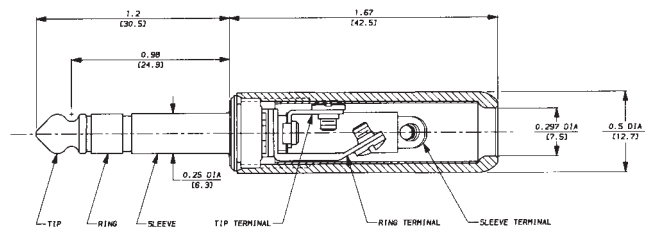
No. 280 typical — shown with solder lug terminals, cord clamp and shielded handle.



No. 260 typical — shown with screw-type terminals and plastic handle.



No. 570 (Typical)



No. 590 (Typical)

DIMENSIONS ARE FOR REFERENCE ONLY $\frac{\text{Inch}}{\text{(mm)}}$

NOTE: Contact your Switchcraft Representative for price and delivery.